



# ARTWORK FOR APPROVAL

IMPORTANT: This drawing is for approximate print positional purposes only. It is not intended to be an exact scale or detailed representation of the product. Colour proofs are to be used as a guide only and not a true representation of true product or print colour. If item colours are important, order a sample from our current shipment.

Order #  
Proof #1  
Date 00/00/00

- Product Code : LN9347
- Description : Bluetooth Selfie Stick
- Item Colour/s : Black/Black, Blue/Black, Green/Black, Orange/Black, Pink/Black, Purple/Black, Red/Black, Yellow/Black
- Quantity :
- Decoration Type : Pad (Selfie Stick) + Digital Direct (Box)
- Print Colour :



BELOW IS 50% OF ACTUAL SIZE



PLEASE SEE NEXT PAGE...

### INTERNAL USE ONLY

INT:

QC Code:	New Pte # _____	Info:	Q: _____	Ctns: _____	Wt(kg): _____
PP:	Prt Int: _____	Prep:	S: _____	D: _____	
Rpt Ord:	Rpt Pte # _____	Cat:	E: _____	Ctns: _____	Wt(kg): _____
Split: Y/N	Mach: _____	U/P Int: _____	R/P Int: _____	R: _____	D: _____
Courier:					Total Wt(kg): _____

# BLACK/BLACK

Maximum print area: Back Cradle Arm: 40mmL x 8mmH  
Front Cradle Base: Left or Right: 30mmL x 5mmH  
Actual print size:



# BLUE/BLACK

Maximum print area: Back Cradle Arm: 40mmL x 8mmH  
Front Cradle Base: Left or Right: 30mmL x 5mmH  
Actual print size:

**BACK**

**FRONT**



# GREEN/BLACK

Maximum print area: Back Cradle Arm: 40mmL x 8mmH  
Front Cradle Base: Left or Right: 30mmL x 5mmH  
Actual print size:

**BACK**

**FRONT**



# ORANGE/BLACK

Maximum print area: Back Cradle Arm: 40mmL x 8mmH  
Front Cradle Base: Left or Right: 30mmL x 5mmH  
Actual print size:

**BACK**

**FRONT**



# PINK/BLACK

Maximum print area: Back Cradle Arm: 40mmL x 8mmH  
Front Cradle Base: Left or Right: 30mmL x 5mmH  
Actual print size:

**BACK**

**FRONT**



# PURPLE/BLACK

Maximum print area: Back Cradle Arm: 40mmL x 8mmH  
Front Cradle Base: Left or Right: 30mmL x 5mmH  
Actual print size:

**BACK**

**FRONT**



# RED/BLACK

Maximum print area: Back Cradle Arm: 40mmL x 8mmH  
Front Cradle Base: Left or Right: 30mmL x 5mmH  
Actual print size:





# YELLOW/BLACK

Maximum print area: Back Cradle Arm: 40mmL x 8mmH  
Front Cradle Base: Left or Right: 30mmL x 5mmH  
Actual print size:

**BACK**

**FRONT**



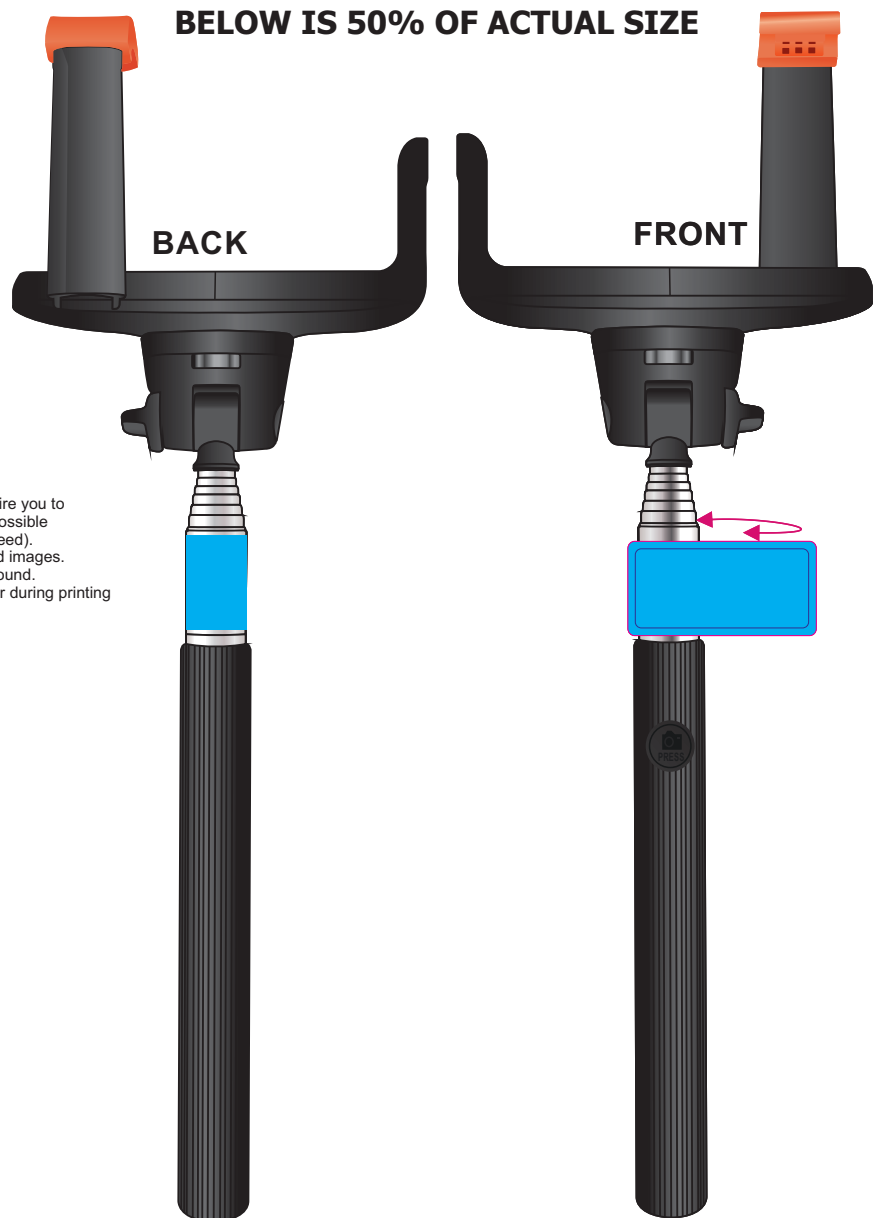


# ARTWORK FOR APPROVAL

**IMPORTANT:** This drawing is for approximate print positional purposes only. It is not intended to be an exact scale or detailed representation of the product. Colour proofs are to be used as a guide only and not a true representation of true product or print colour. If item colours are important, order a sample from our current shipment.

Order #  
Proof #1  
Date 00/00/00

**Product Code** : LN9347  
**Description** : Bluetooth Selfie Stick  
**Item Colour/s** : Black/Black, Blue/Black, Green/Black, Orange/Black, Pink/Black, Purple/Black, Red/Black, Yellow/Black  
**Quantity** :  
**Decoration Type** : 4CP Deluxe Silver Metallised or White Vinyl Label + Digital Direct (Box)  
**Print Colour**



**LABEL NOTE:**

Labels are applied by hand and although the greatest care is taken label positioning cannot be guaranteed across the entire order. They are digitally printed in CMYK. If pantone colour matching is important we require you to provide specific PMS colours, and we will produce closest CMYK colour match possible (to CP equivalent of coated pantone colours - perfect colour match not guaranteed). Vector art is required for colour matching. We are unable to edit colours in rasterized images. Print colours may be altered in appearance if placed on a strong colour background. Design position cannot be guaranteed across the entire order, some movement does occur during printing

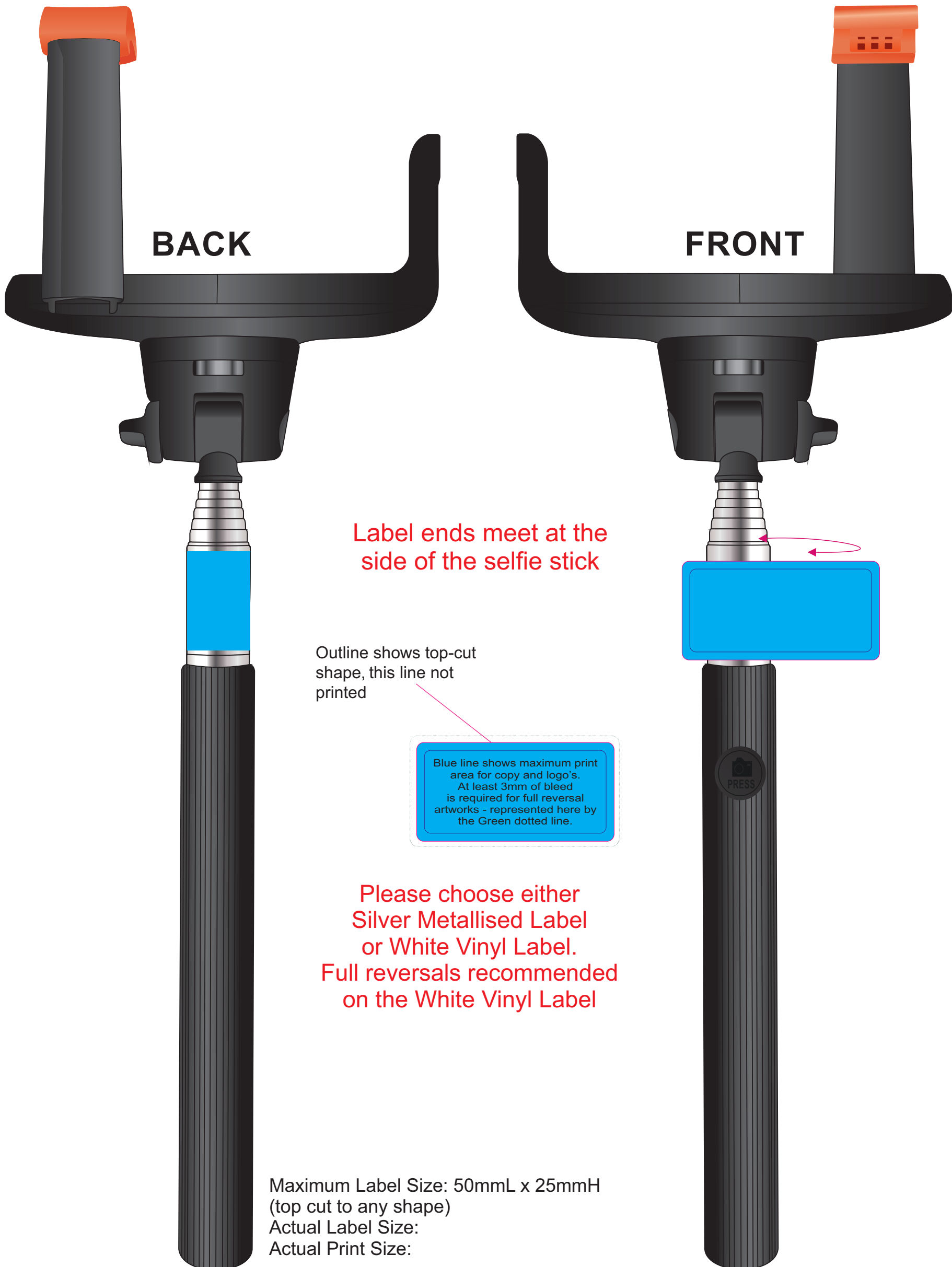
**PLEASE SEE NEXT PAGE...**

**INTERNAL USE ONLY**

**INT:**

QC Code:	New Pte # _____	Info:	Q: _____	Ctns: _____	Wt(kg): _____
PP:	Prt Int: _____	Prep:	S: _____	D: _____	
Rpt Ord:	Rpt Pte # _____	Cat:	E: _____	Ctns: _____	Wt(kg): _____
Split: Y/N	Mach: _____	U/P Int: _____	R/P Int: _____	R: _____	D: _____
Courier:					Total Wt(kg): _____

# BLACK/BLACK



BACK

FRONT

Label ends meet at the side of the selfie stick

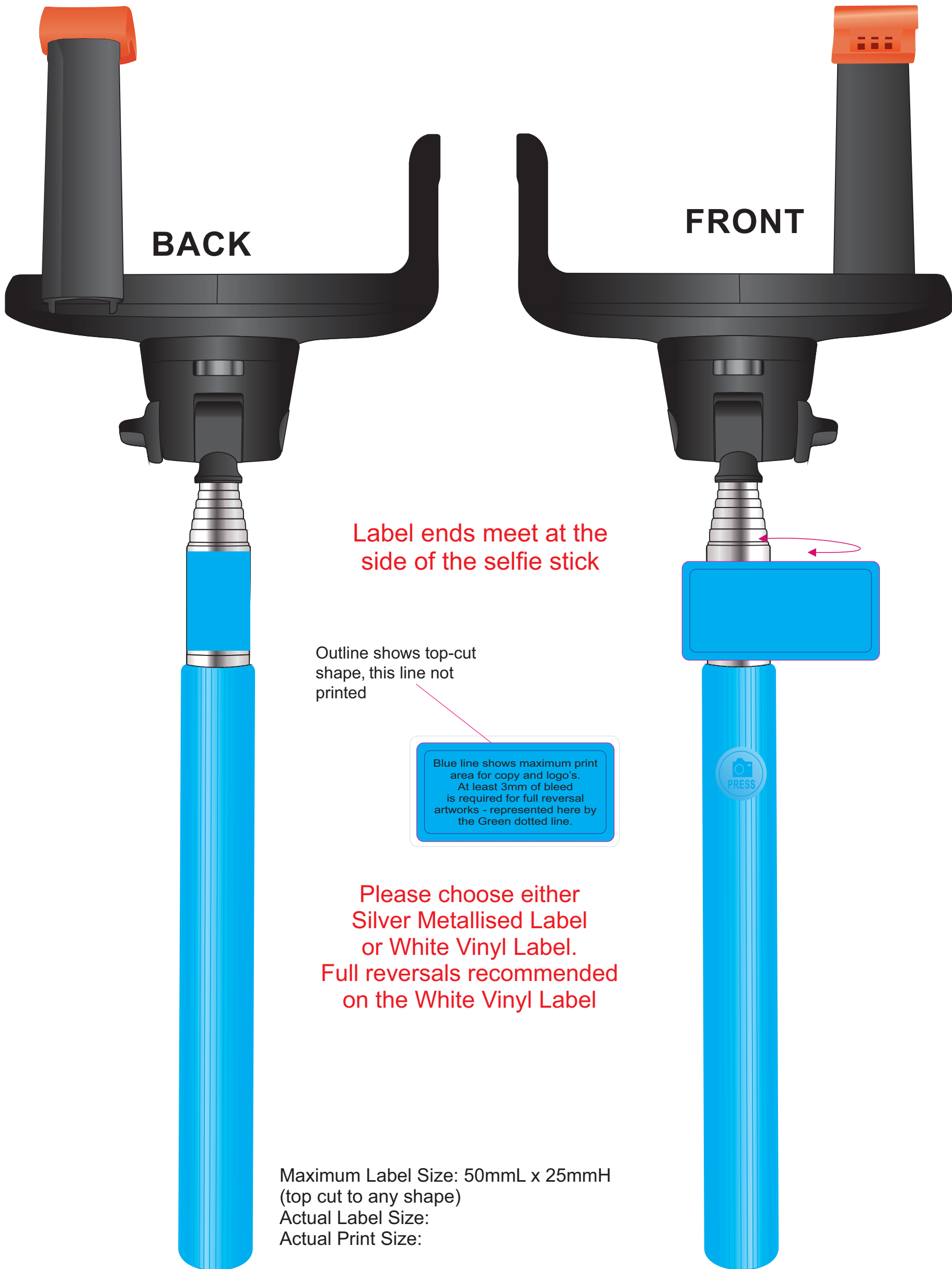
Outline shows top-cut shape, this line not printed

Blue line shows maximum print area for copy and logo's. At least 3mm of bleed is required for full reversal artworks - represented here by the Green dotted line.

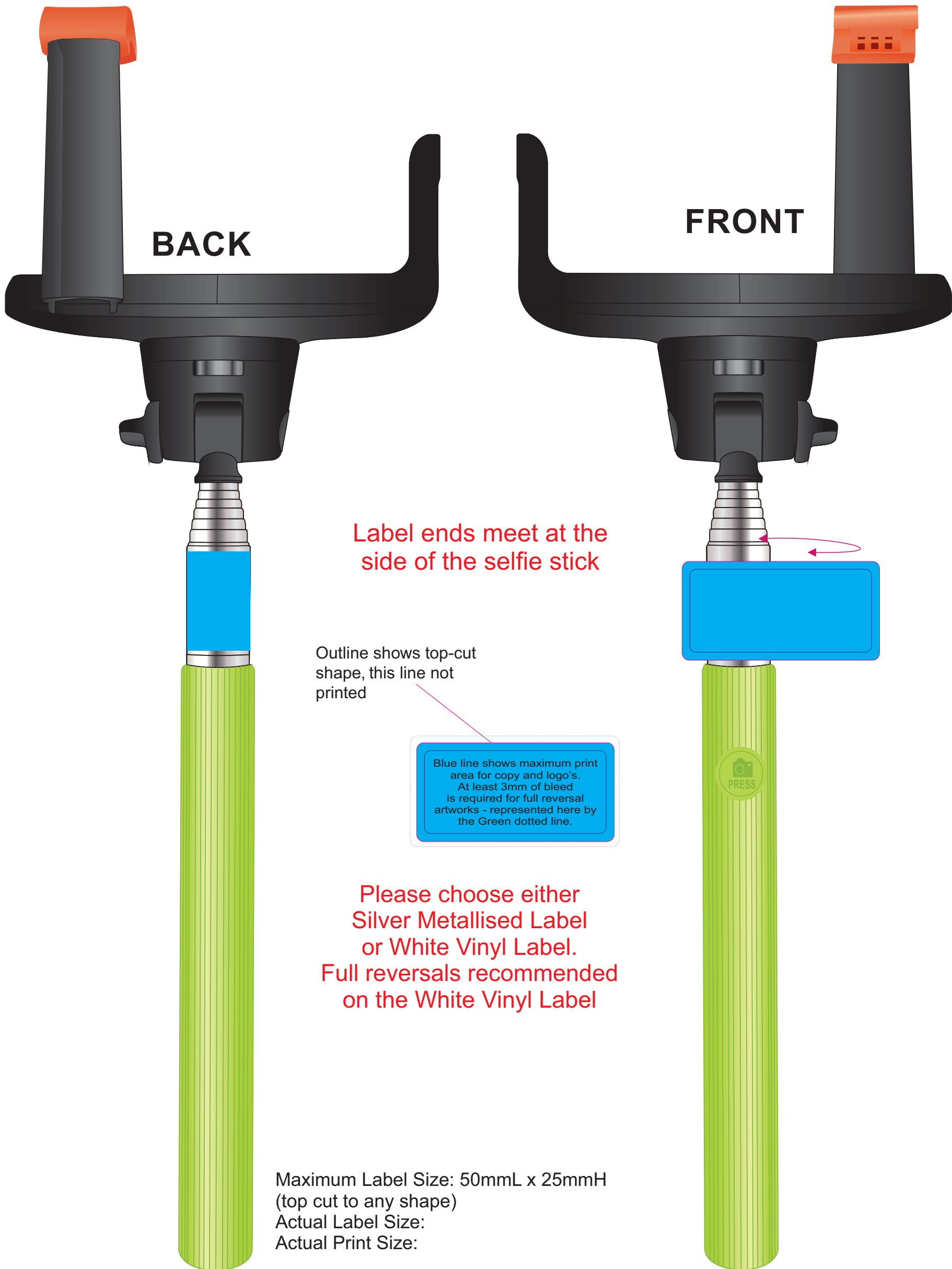
Please choose either Silver Metallised Label or White Vinyl Label. Full reversals recommended on the White Vinyl Label

Maximum Label Size: 50mmL x 25mmH (top cut to any shape)  
Actual Label Size:  
Actual Print Size:

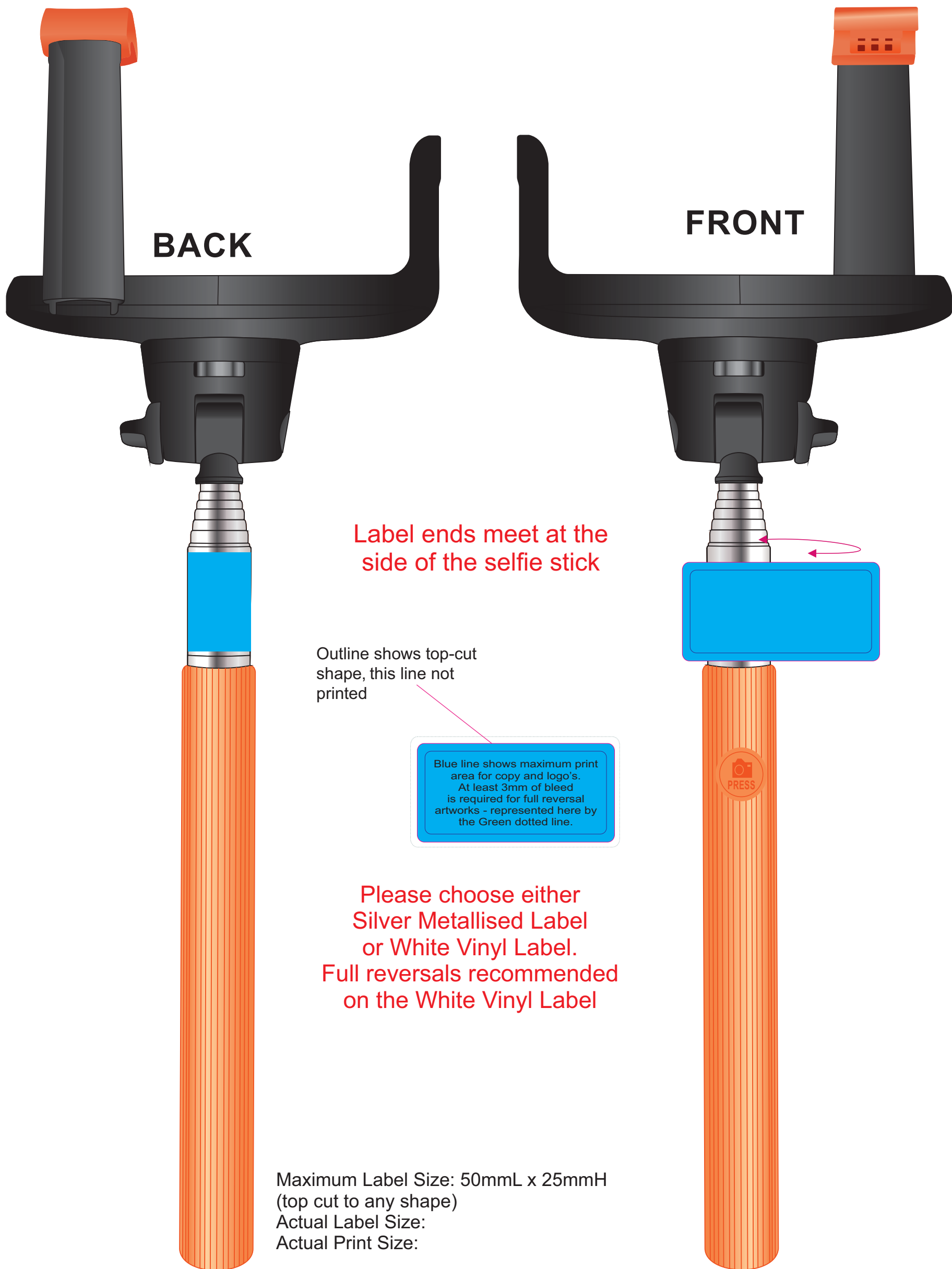
# BLUE/BLACK



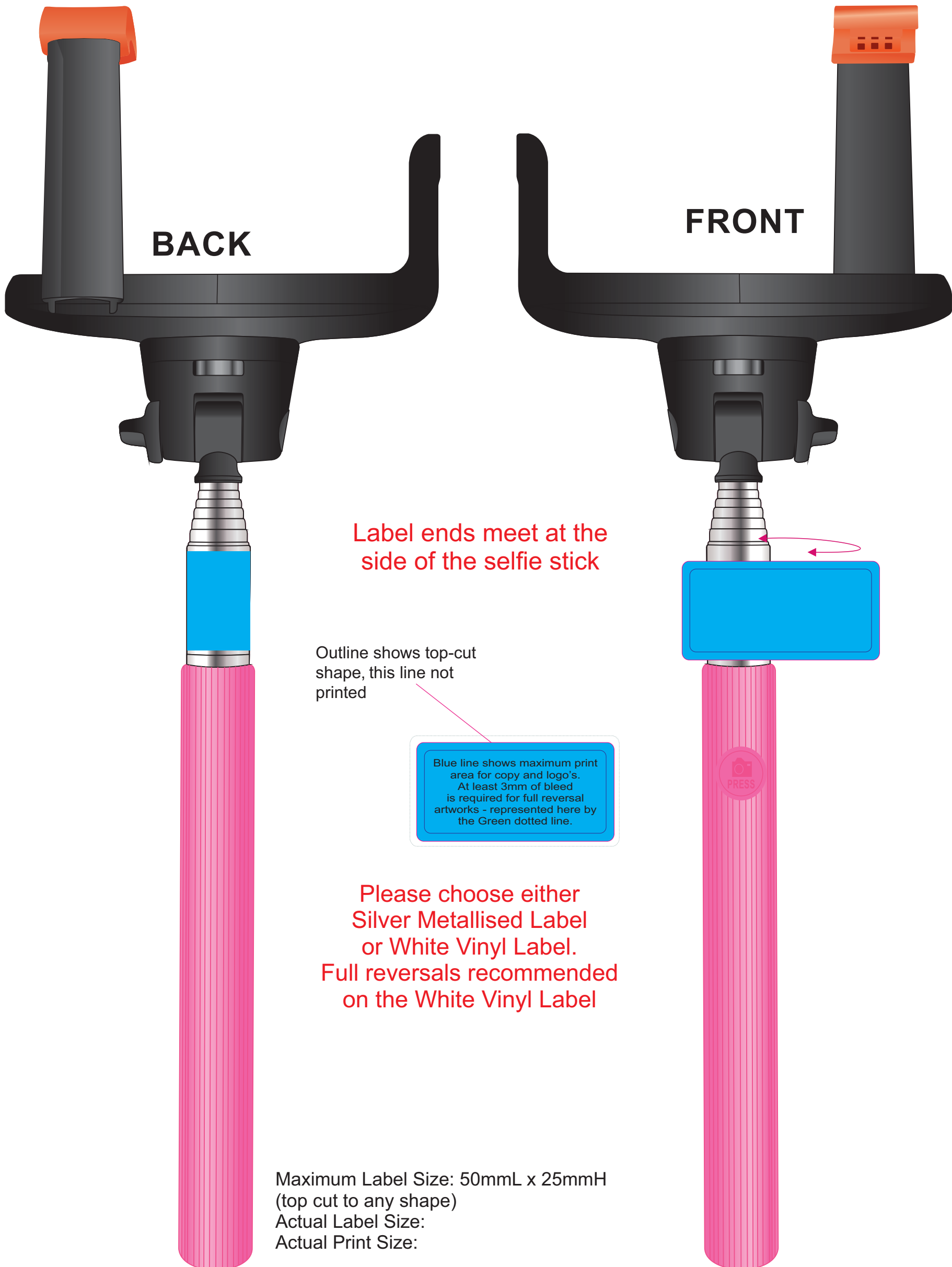
# GREEN/BLACK



# ORANGE/BLACK



# PINK/BLACK



**BACK**

**FRONT**

Label ends meet at the side of the selfie stick

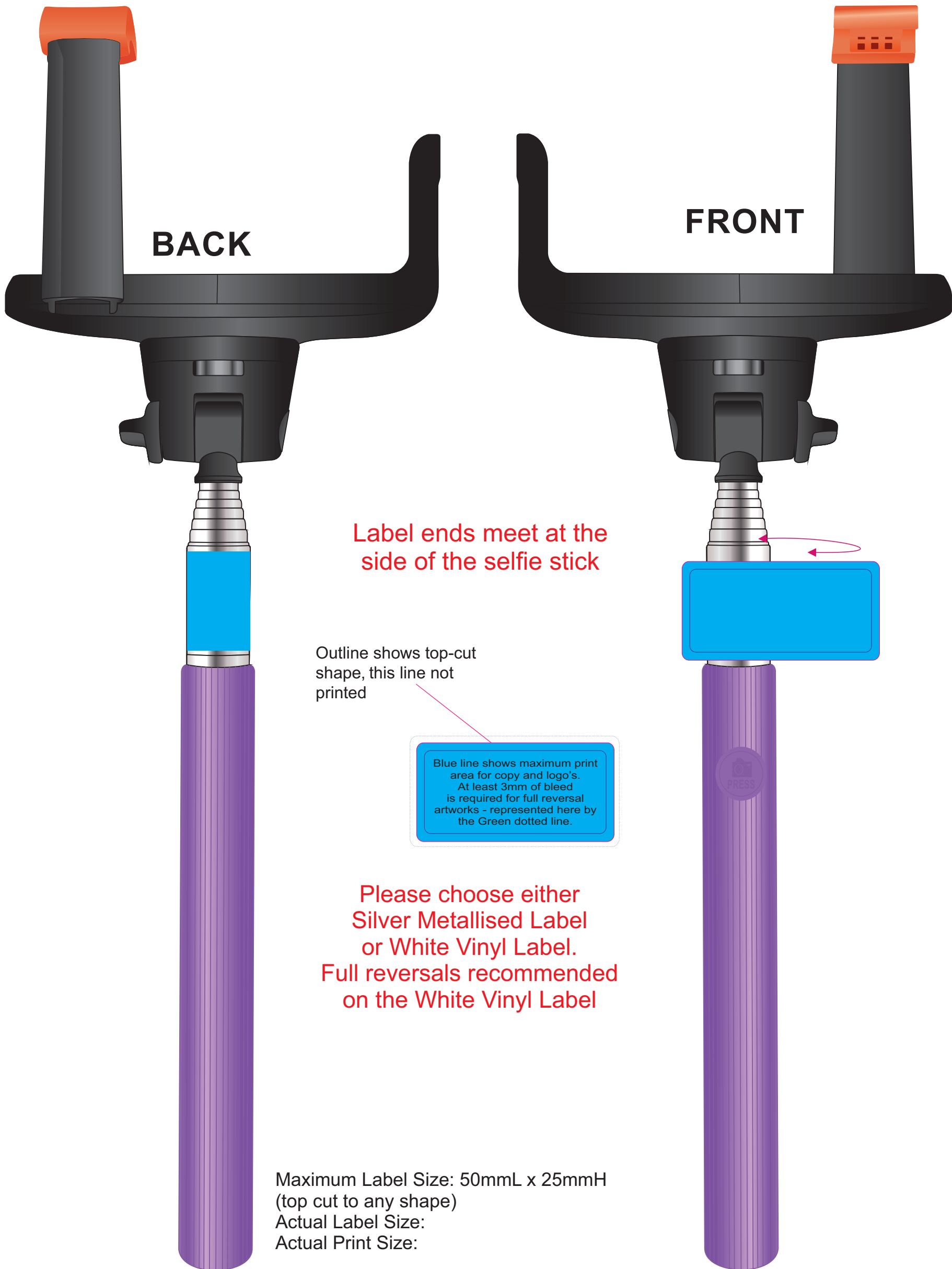
Outline shows top-cut shape, this line not printed

Blue line shows maximum print area for copy and logo's. At least 3mm of bleed is required for full reversal artworks - represented here by the Green dotted line.

Please choose either Silver Metallised Label or White Vinyl Label. Full reversals recommended on the White Vinyl Label

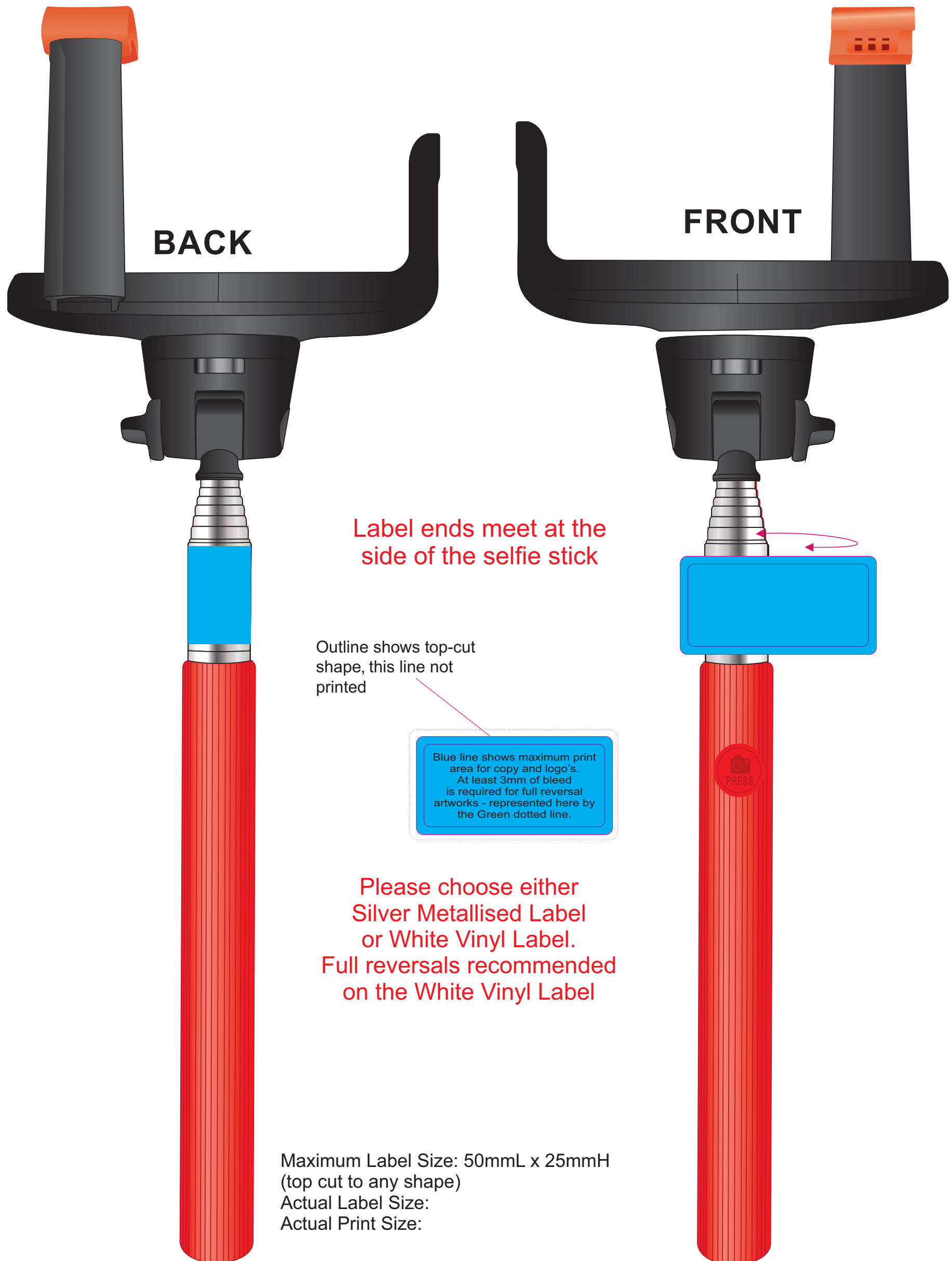
Maximum Label Size: 50mmL x 25mmH (top cut to any shape)  
Actual Label Size:  
Actual Print Size:

# PURPLE/BLACK

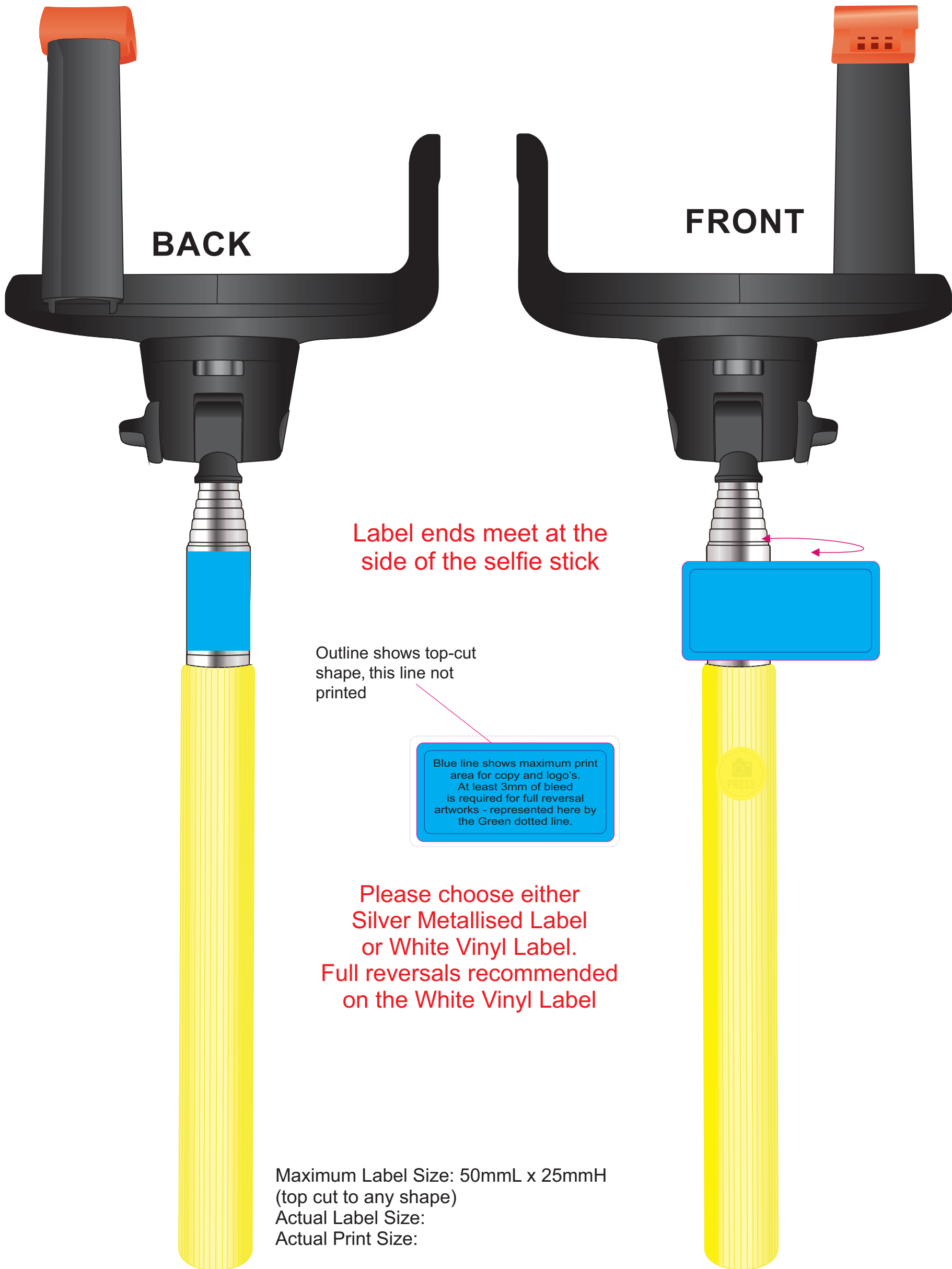




# RED/BLACK



# YELLOW/BLACK



BACK

FRONT

Label ends meet at the side of the selfie stick

Outline shows top-cut shape, this line not printed

Blue line shows maximum print area for copy and logo's. At least 3mm of bleed is required for full reversal artworks - represented here by the Green dotted line.

Please choose either Silver Metallised Label or White Vinyl Label. Full reversals recommended on the White Vinyl Label

Maximum Label Size: 50mmL x 25mmH (top cut to any shape)  
Actual Label Size:  
Actual Print Size:

# White gift box is supplied digitally printed

**DIGITAL DIRECT:** This item is digitally printed in CMYK.  
If pantone colour matching is important we require you to provide specific PMS colours, and we will produce closest CMYK colour match possible (to CP equivalent of coated pantone colours - perfect colour match not guaranteed). Vector art is required for colour matching. We are unable to edit colours in rasterized images. Print colours may be altered in appearance if placed on a strong colour background.

