

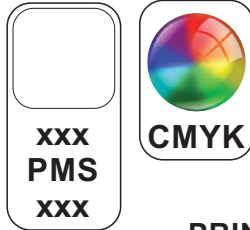


ARTWORK FOR APPROVAL


IMPORTANT: This drawing is for approximate print positional purposes only. It is not intended to be an exact scale or detailed representation of the product. Colour proofs are to be used as a guide only and not a true representation of true product or print colour. If item colours are important, order a sample from our current shipment.

Order #
Proof #1
Date 00/00/00

Product Code : LN9104
Description : Aluminium Mobile Phone Power Bank
Item Colour/s : Black, Blue, Red, Silver, Pink, Gold, Green, Purple
Quantity :
Decoration Type : Pad (Powerbank) + Digital Direct (Box)
Print Colour



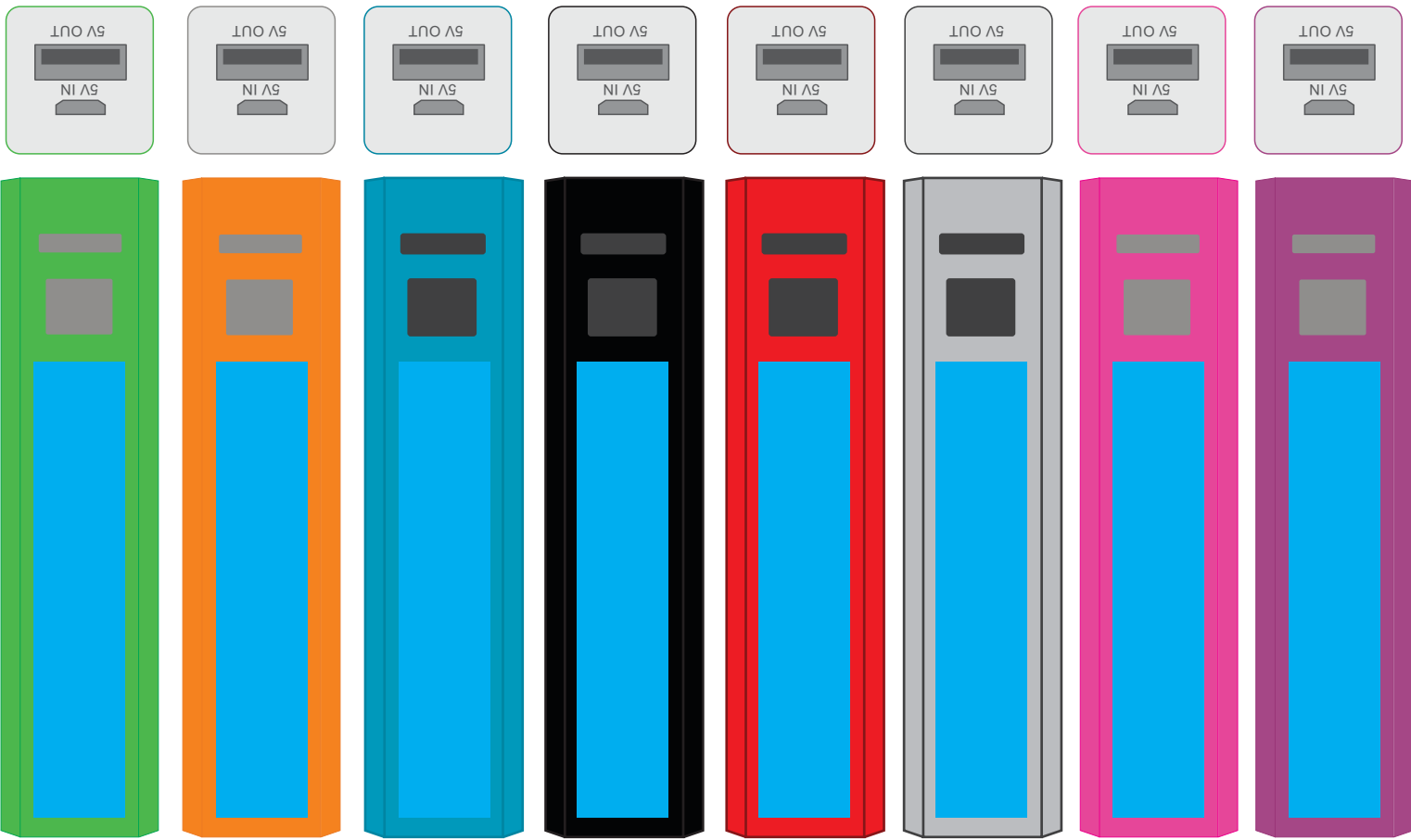
Supplied With

3 in 1 cable 

PRINT PERMANENCY

Print permanency is not guaranteed, as constant abrasion against the item may remove the print over time. We recommend storing this item in it's gift box for print longevity when not in use.

Laser engraving is the most permanent decoration method.



Maximum print area: Button Side: 65mmL x 13mmH
Actual print size:

PLEASE SEE NEXT PAGE...

INTERNAL USE ONLY

INT:

QC Code:	New Pte # _____	Info:	Q: _____	Ctns: _____	Wt(kg): _____
PP:	Prt Int: _____	Prep:	S: _____	D: _____	
Rpt Ord:	Rpt Pte # _____	Cat:	E: _____	Ctns: _____	Wt(kg): _____
Split: Y/N	Mach: _____	U/P Int: _____	R/P Int: _____	R: _____	D: _____
Courier:					Total Wt(kg): _____



ARTWORK FOR APPROVAL


IMPORTANT: This drawing is for approximate print positional purposes only. It is not intended to be an exact scale or detailed representation of the product. Colour proofs are to be used as a guide only and not a true representation of true product or print colour. If item colours are important, order a sample from our current shipment.

Order #
Proof #1
Date 00/00/00

Product Code : LN9104
Description : Aluminium Mobile Phone Power Bank
Item Colour/s : Black, Blue, Red, Silver, Pink, Gold, Green, Purple
Quantity :
Decoration Type : Laser Engrave (PowerBank) + Digital Direct (Box)
Print Colour

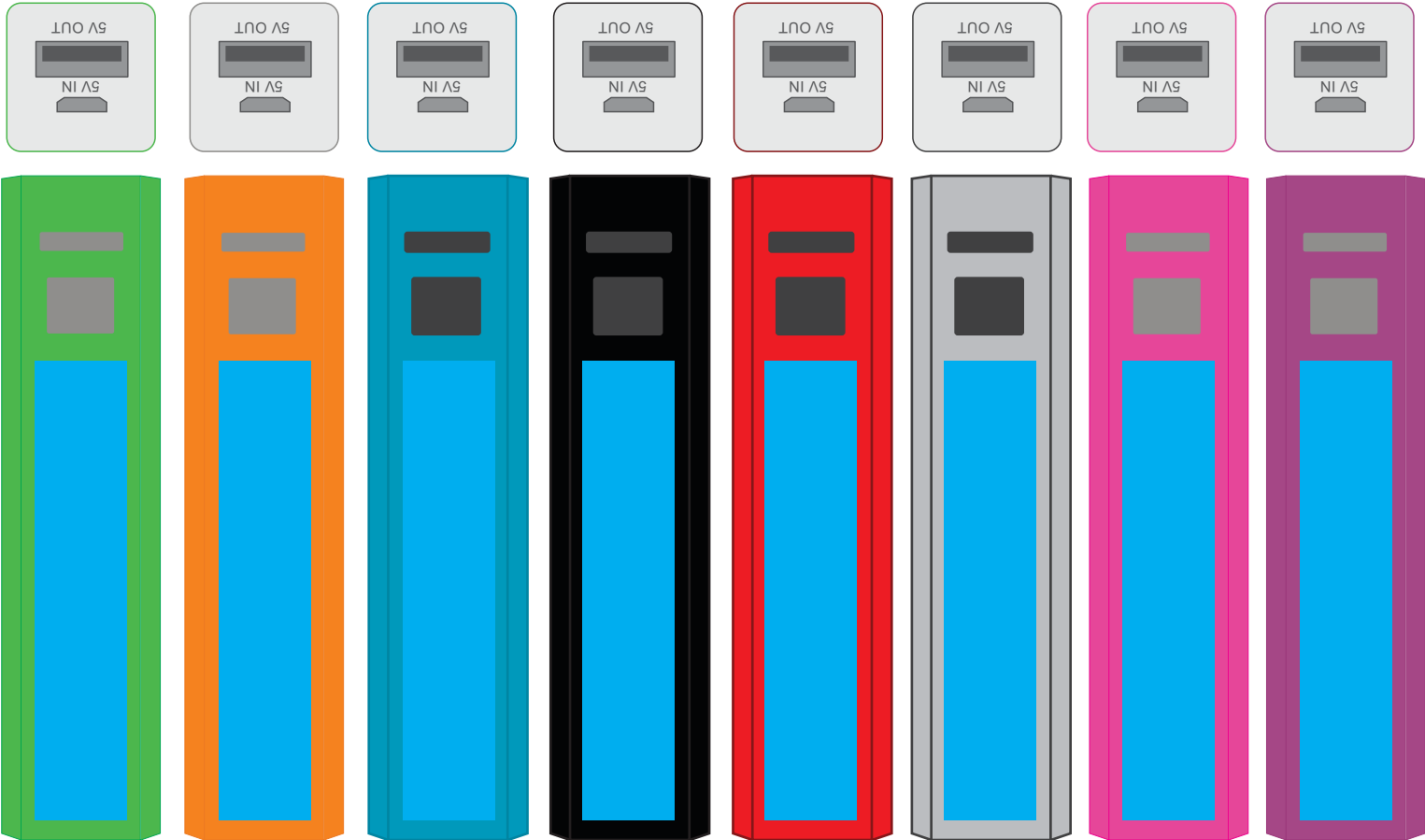


Supplied With

3 in 1 cable 

LASER ENGRAVING VARIATIONS:

Due to slight variations in the composition of item materials its possible laser engraving results will vary from time to time and this is considered normal.



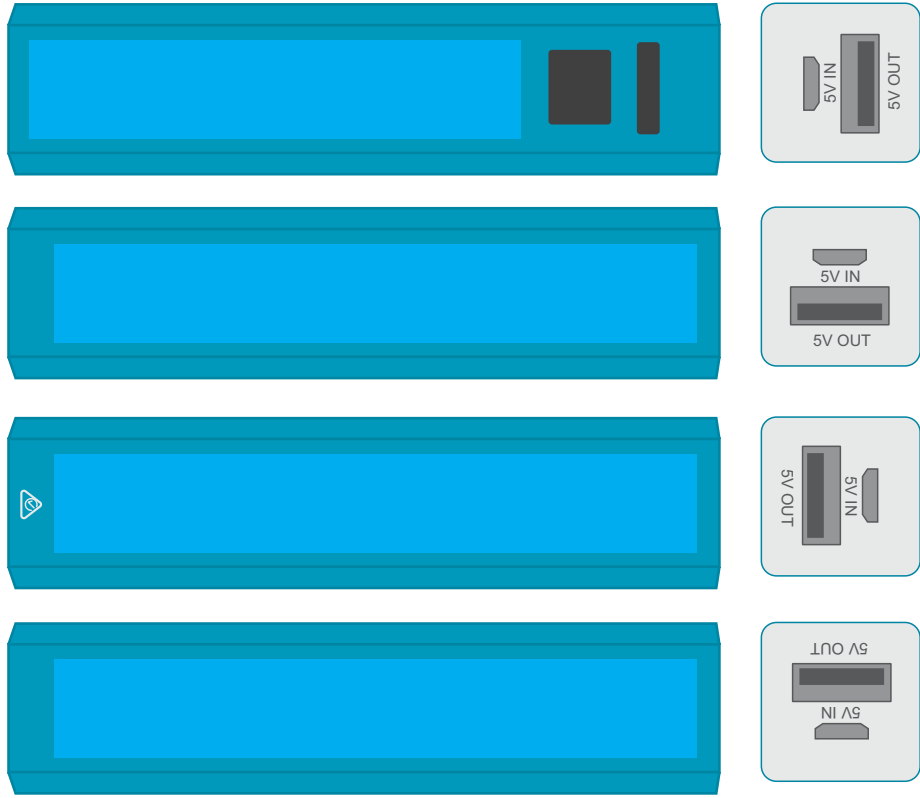
Maximum print area: Button Side: 65mmL x 13mmH
Actual print size:

PLEASE SEE NEXT PAGE...

INTERNAL USE ONLY

INT:

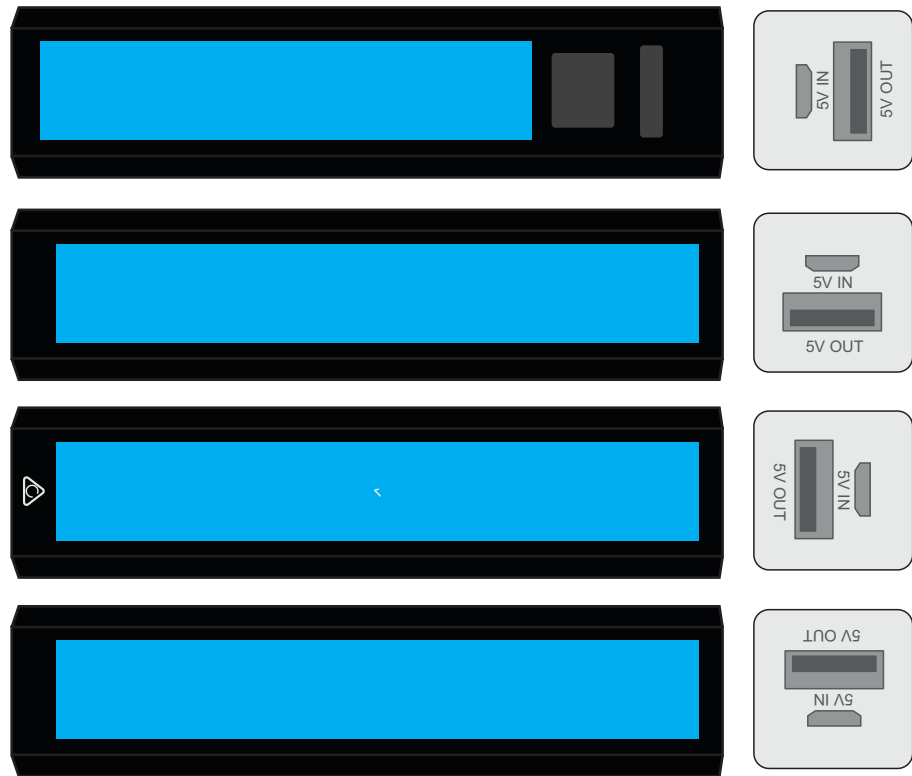
QC Code:	New Pte # _____	Info:	Q: _____	Ctns: _____	Wt(kg): _____
PP:	Prt Int: _____	Prep:	S: _____	D: _____	
Rpt Ord:	Rpt Pte # _____	Cat:	E: _____	Ctns: _____	Wt(kg): _____
Split: Y/N	Mach: _____	U/P Int: _____	R/P Int: _____	R: _____	D: _____
Courier:					Total Wt(kg): _____



Maximum print area:

Button Side: 65mmL x 13mmH & Non-Button Side: 85mmL x 13mmH

Actual print size:

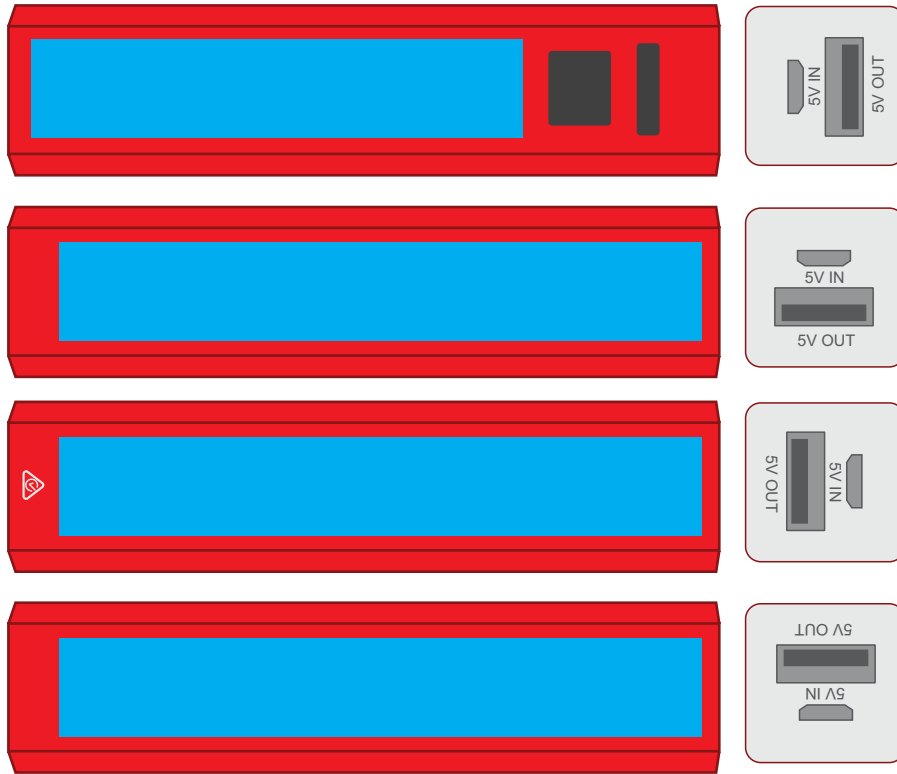


Maximum print area:

Button Side: 65mmL x 13mmH & Non-Button Side: 85mmL x 13mmH

Actual print size:

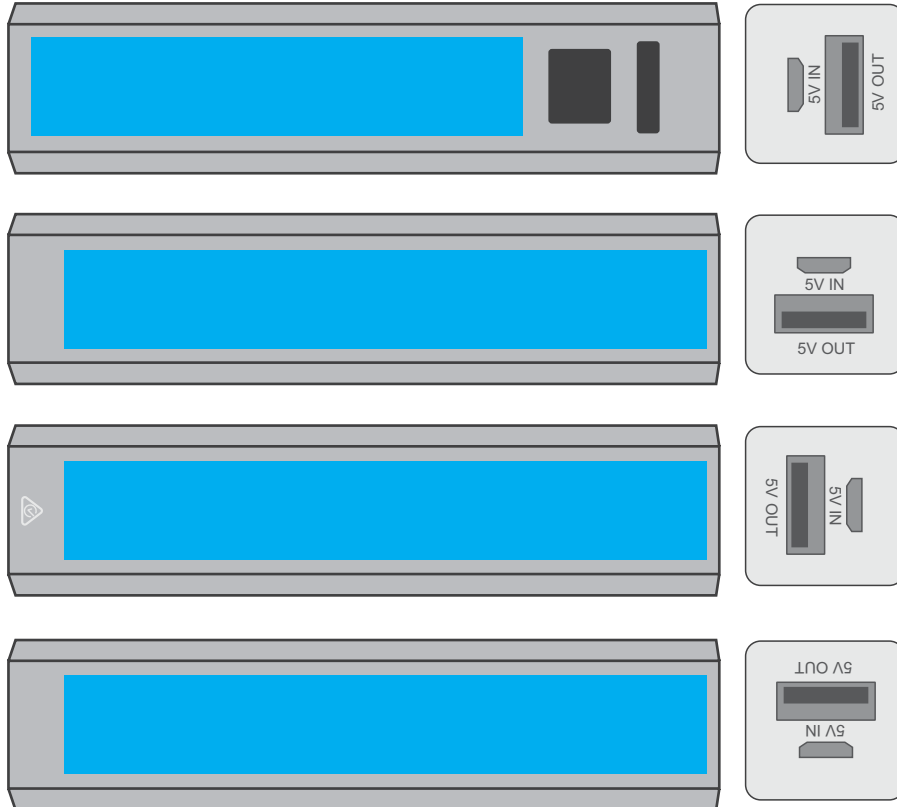
PLEASE SEE NEXT PAGE...



Maximum print area:

Button Side: 65mmL x 13mmH & Non-Button Side: 85mmL x 13mmH

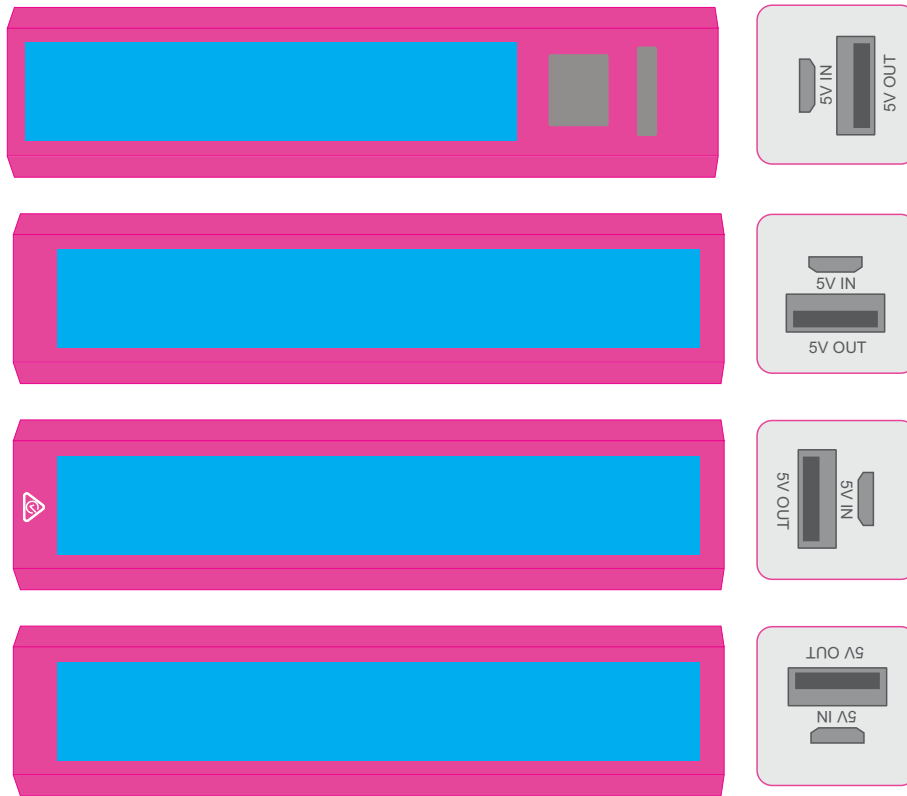
Actual print size:



Maximum print area:

Button Side: 65mmL x 13mmH & Non-Button Side: 85mmL x 13mmH

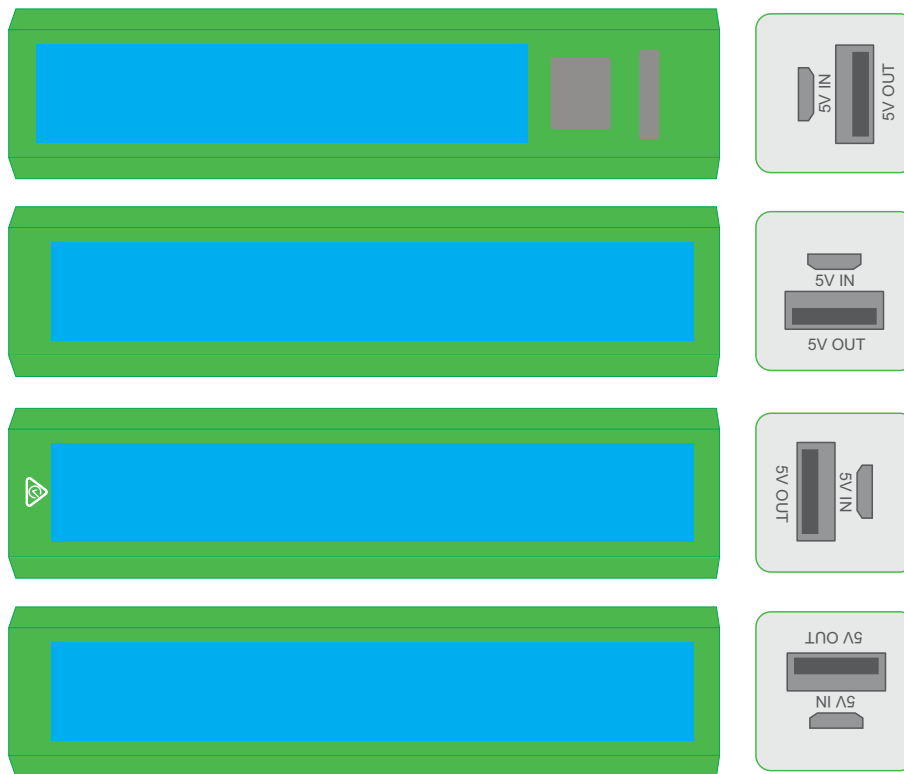
Actual print size:



Maximum print area:

Button Side: 65mmL x 13mmH & Non-Button Side: 85mmL x 13mmH

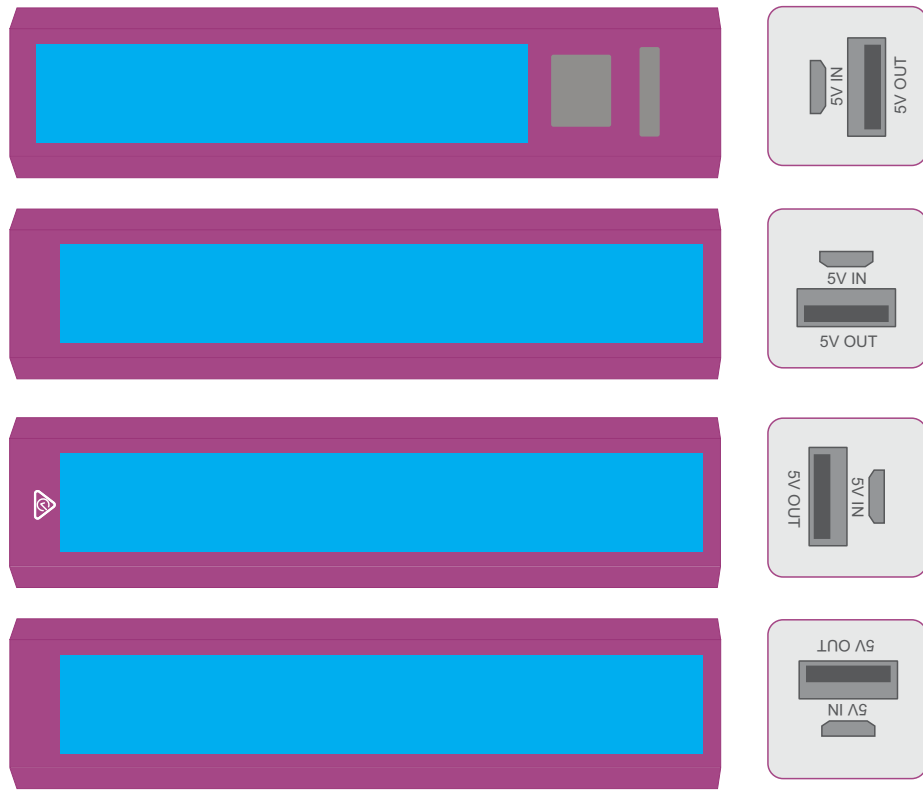
Actual print size:



Maximum print area:

Button Side: 65mmL x 13mmH & Non-Button Side: 85mmL x 13mmH

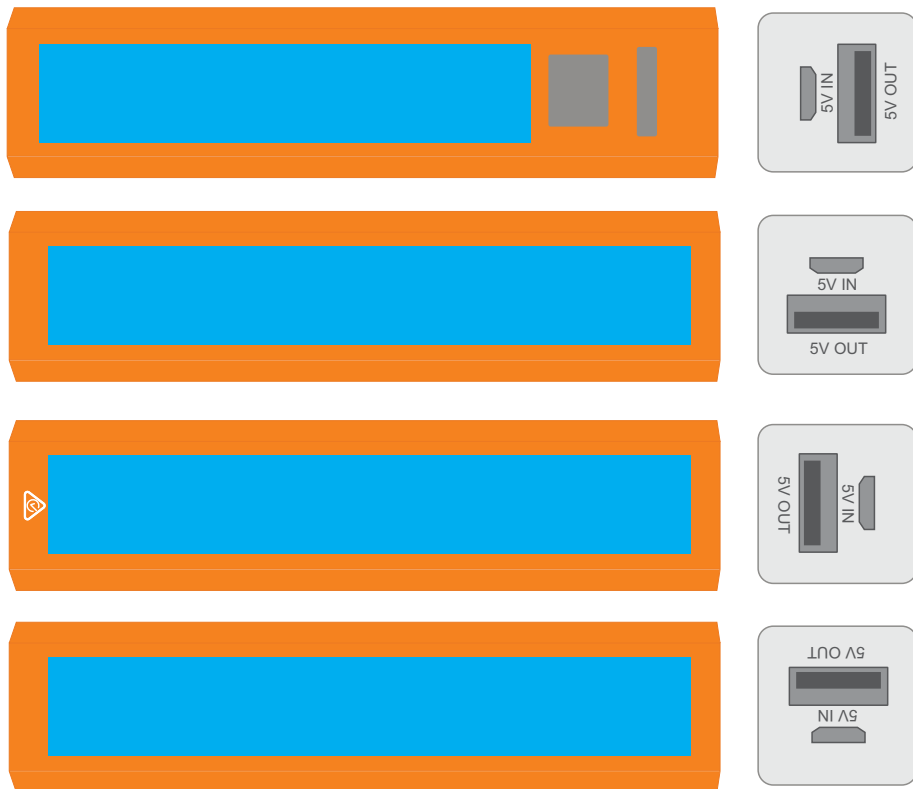
Actual print size:



Maximum print area:

Button Side: 65mmL x 13mmH & Non-Button Side: 85mmL x 13mmH

Actual print size:



Maximum print area:

Button Side: 65mmL x 13mmH & Non-Button Side: 85mmL x 13mmH

Actual print size:



ARTWORK FOR APPROVAL


IMPORTANT: This drawing is for approximate print positional purposes only. It is not intended to be an exact scale or detailed representation of the product. Colour proofs are to be used as a guide only and not a true representation of true product or print colour. If item colours are important, order a sample from our current shipment.

Order #
Proof #1
Date 00/00/00

Product Code : LN9104
Description : Aluminium Mobile Phone Power Bank
Quantity :
Decoration Type : Digital Direct 360° Panoprint (Powerbank) + Digital Direct (Box)
Print Colour



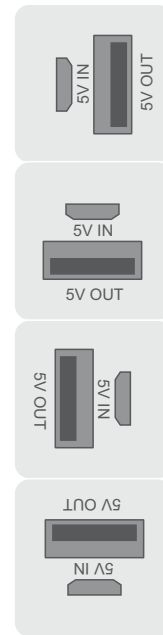
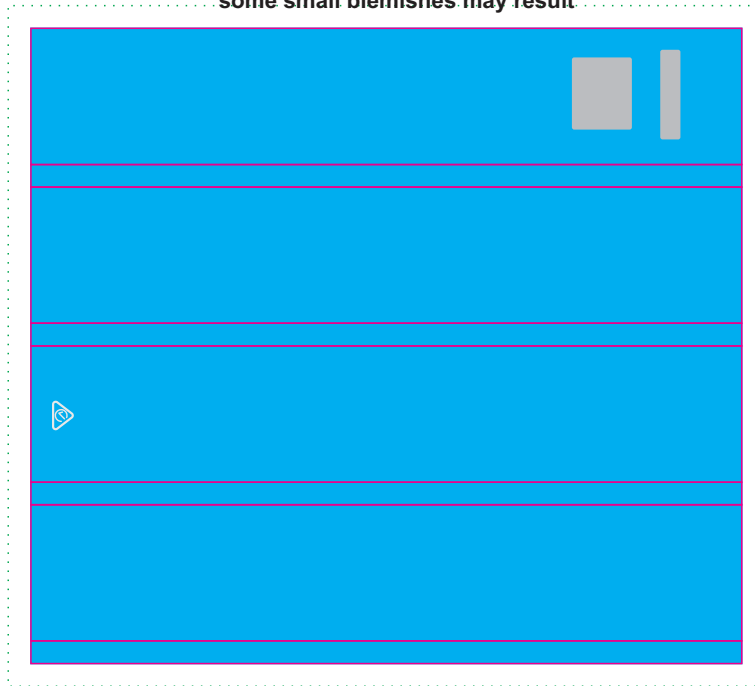
Supplied With

3 in 1 cable 

Please note: This item is digitally printed in CMYK. If pantone colour matching is important we require you to provide specific PMS colours, and we will produce closest CMYK colour match possible (to CP equivalent of coated pantone colours - perfect colour match not guaranteed). Vector art is required for colour matching. We are unable to edit colours in rasterized images. Print colours may be altered in appearance if placed on a strong colour background.

Blue shows max print area, 3mm bleed is required represented here by green dotted line. Pink line represents edges of the power bank and will not be printed. Grey shows button and will also not be printed

Due to the production process some small blemishes may result



Maximum print area: 84mmL x 94mmH
Actual print size:

PLEASE SEE NEXT PAGE...

INTERNAL USE ONLY

INT:

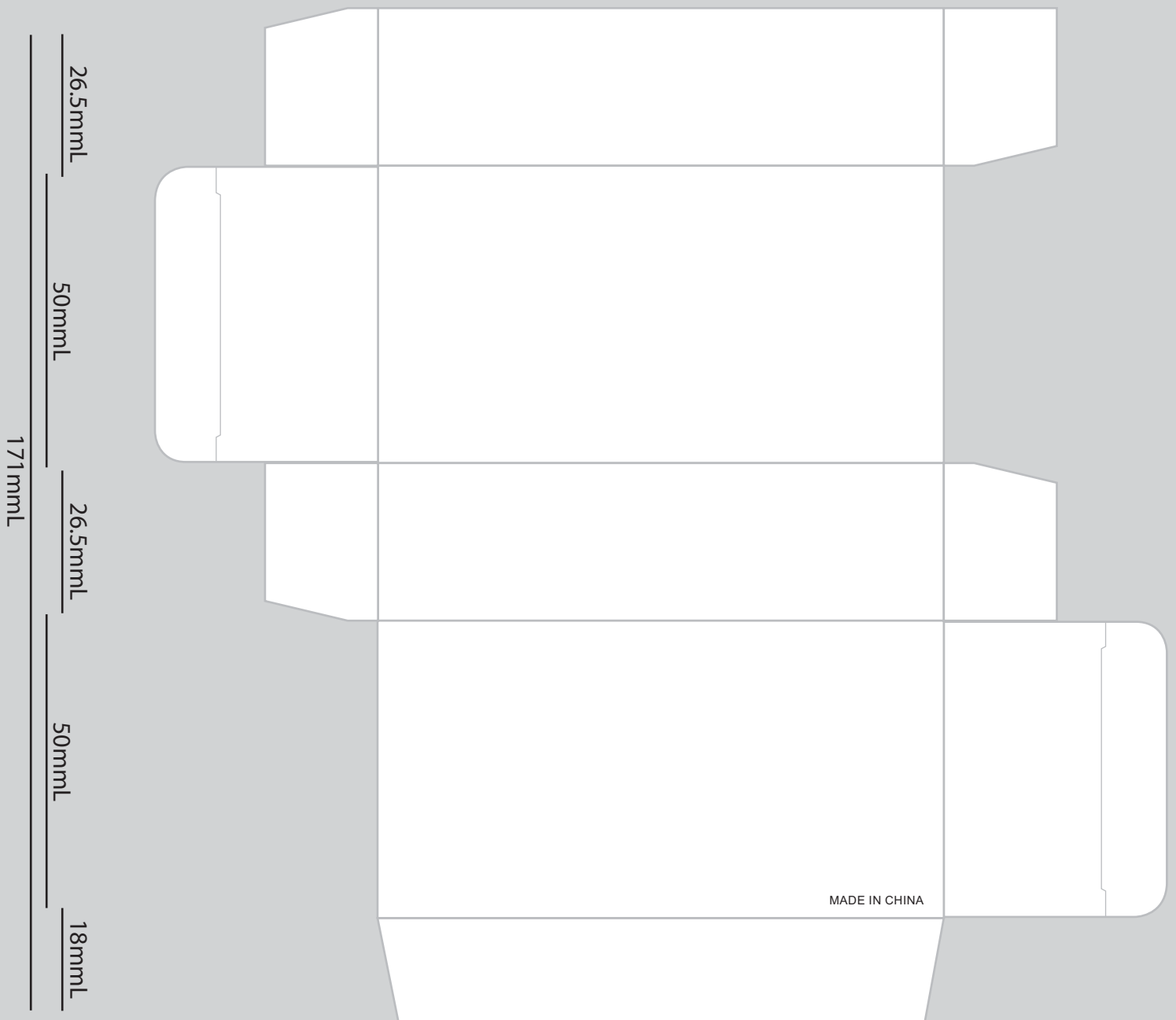
QC Code:	New Pte # _____	Info:	Q: _____	Ctns: _____	Wt(kg): _____
PP:	Prt Int: _____	Prep:	S: _____	D: _____	
Rpt Ord:	Rpt Pte # _____	Cat:	E: _____	Ctns: _____	Wt(kg): _____
Split: Y/N	Mach: _____	U/P Int: _____	R/P Int: _____	R: _____	D: _____
Courier:					Total Wt(kg): _____

White gift box is either supplied plain or digitally printed

DIGITAL DIRECT: This item is digitally printed in CMYK.

If pantone colour matching is important we require you to provide specific PMS colours, and we will produce closest CMYK colour match possible (to CP equivalent of coated pantone colours - perfect colour match not guaranteed). Vector art is required for colour matching. We are unable to edit colours in rasterized images. Print colours may be altered in appearance if placed on a strong colour background.

37.5mmH
19mmH
95mmH



The country of origin must be printed on this box.