

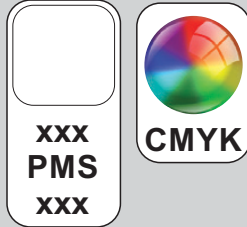


# ARTWORK FOR APPROVAL

**IMPORTANT:** This drawing is for approximate print positional purposes only. It is not intended to be an exact scale or detailed representation of the product. Colour proofs are to be used as a guide only and not a true representation of true product or print colour. If item colours are important, order a sample from our current shipment.

Order #  
 Proof #1  
 Date 00/00/00

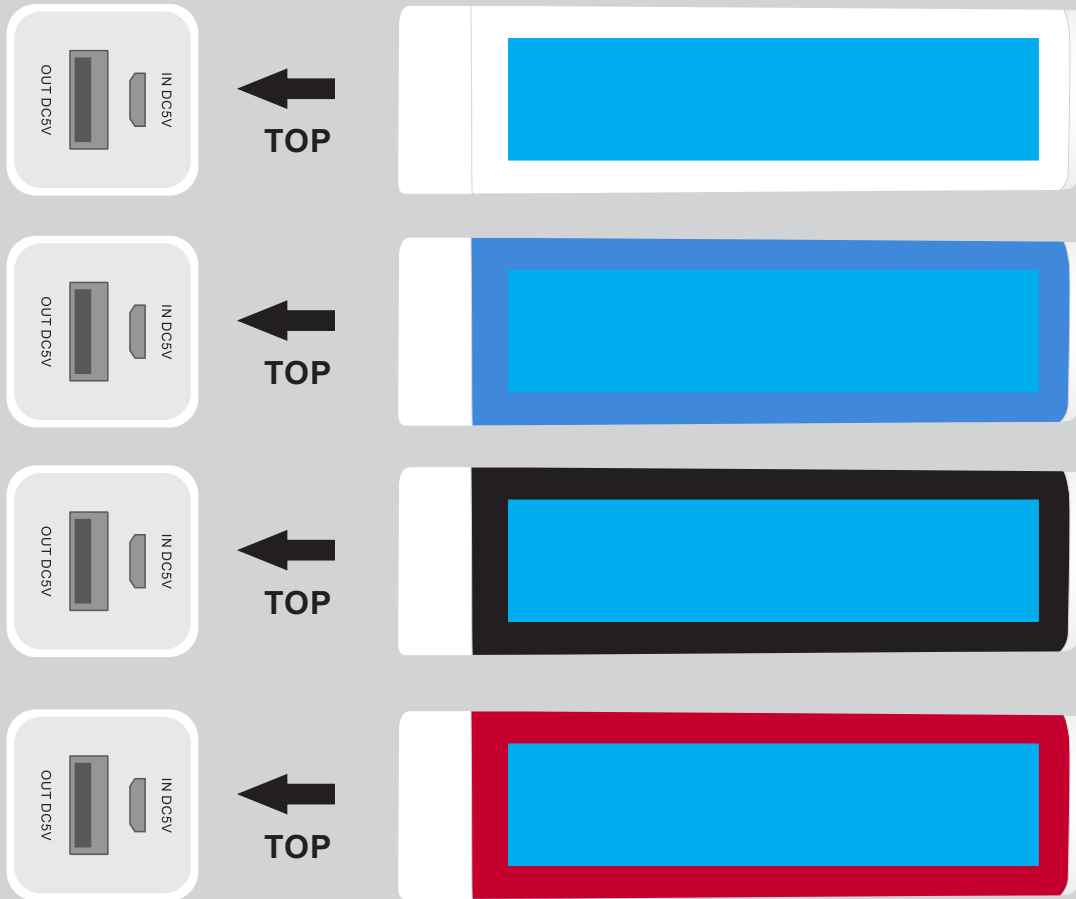
Product Code : LL9082  
 Description : Essential Mobile Phone Power Bank  
 Item Colour/s : Black, Blue, Red, White  
 Quantity :  
 Decoration Type : Pad (Power Bank) + Standard Label (Box)  
 Print Colour



**Standard Inclusions**

Micro USB Cable

**Inner Tube is Coloured  
 Pad printed on clear case**



Maximum print area: 70mmL x 16mmH  
 Actual print size:

**PLEASE SEE NEXT PAGE...**

**INTERNAL USE ONLY**

INT:

QC Code:	New Pte # _____	Info:	Q: _____	Ctns: _____ Wt(kg): _____
PP:	Prt Int: _____	Prep:	S: _____	D: _____
Rpt Ord:	Rpt Pte # _____	Cat:	E: _____	Ctns: _____ Wt(kg): _____
Split: Y/N	Mach: _____	U/P Int: _____	R/P Int: _____	R: _____
Courier:				Total Wt(kg): _____



# ARTWORK FOR APPROVAL

**IMPORTANT:** This drawing is for approximate print positional purposes only. It is not intended to be an exact scale or detailed representation of the product. Colour proofs are to be used as a guide only and not a true representation of true product or print colour. If item colours are important, order a sample from our current shipment.

Order #  
 Proof #1  
 Date 00/00/00

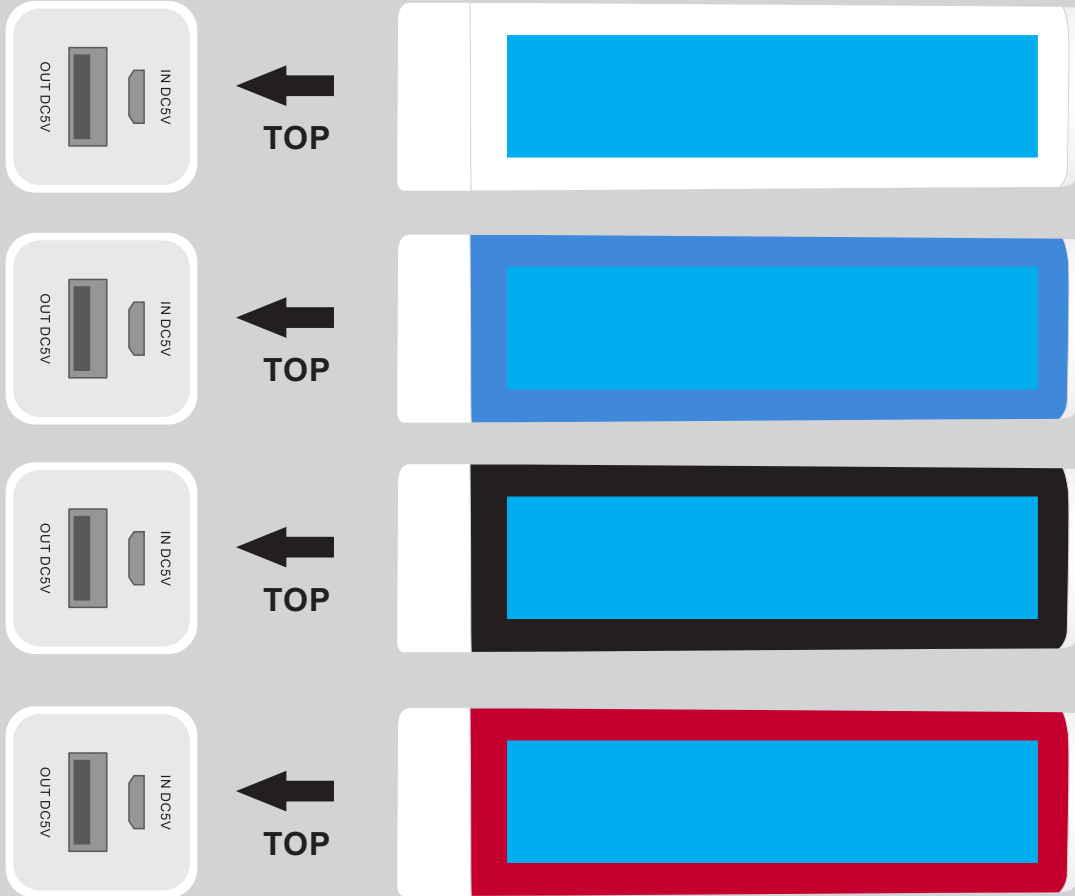
Product Code : LL9082  
 Description : Essential Mobile Phone Power Bank  
 Item Colour/s : Black, Blue, Red, White  
 Quantity :  
 Decoration Type : Digital Direct (Power Bank) + Standard Label (Box)  
 Print Colour



**Standard Inclusions**

Micro USB Cable 

**DIGITAL DIRECT:** This item is digitally printed in CMYK. If pantone colour matching is important we require you to provide specific PMS colours, and we will produce closest CMYK colour match possible (to CP equivalent of coated pantone colours - perfect colour match not guaranteed). Vector art is required for colour matching. We are unable to edit colours in rasterized images. Print colours may be altered in appearance if placed on a strong colour background.



Maximum print area: 70mmL x 16mmH  
 Actual print size:

**Inner Tube is Coloured  
 Digitally printed on clear case**

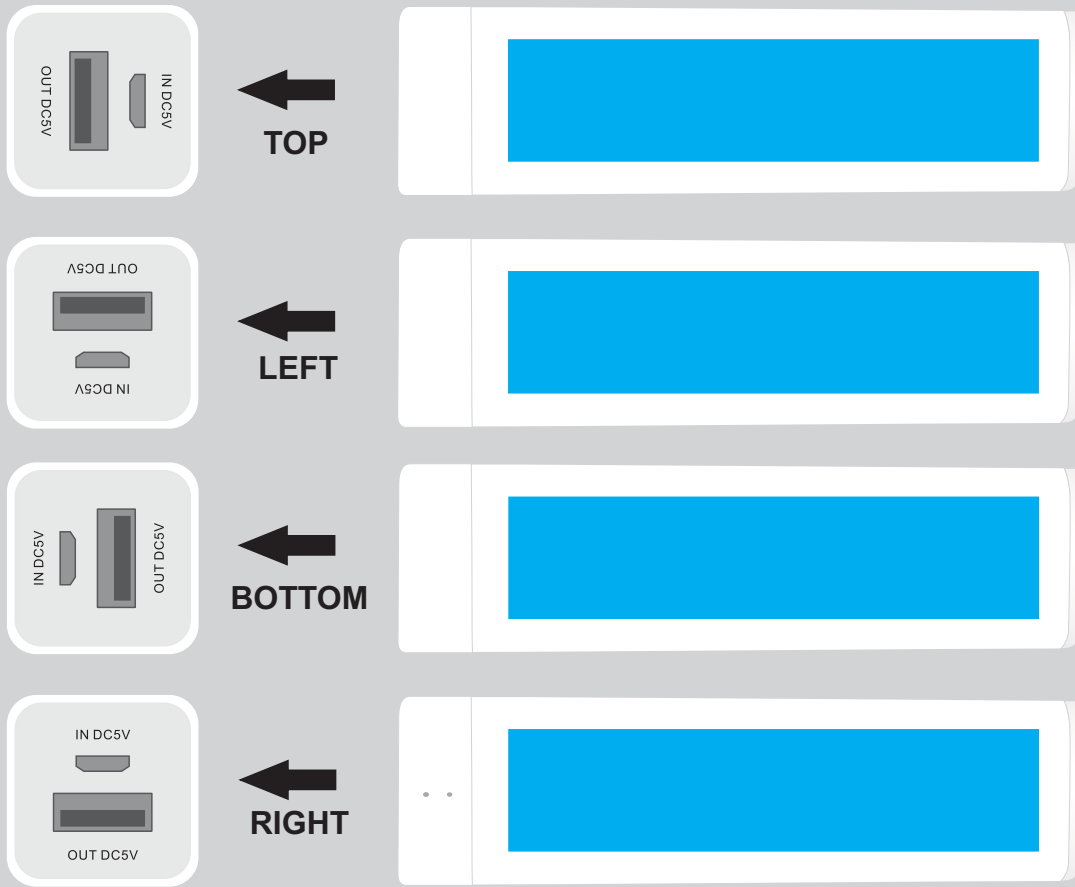
**PLEASE SEE NEXT PAGE...**

**INTERNAL USE ONLY**

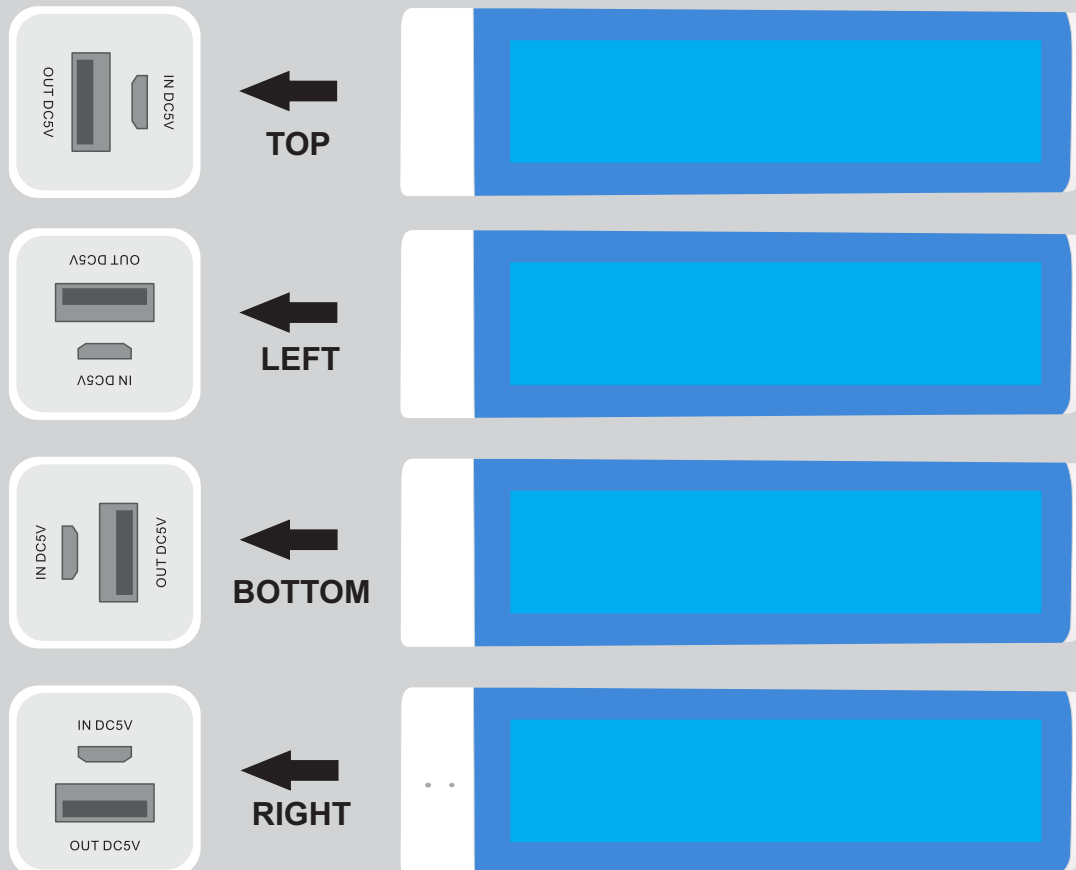
INT:

QC Code:	New Pte # _____	Info:	Q: _____	Ctns: _____	Wt(kg): _____
PP:	Prt Int: _____	Prep:	S: _____	D: _____	
Rpt Ord:	Rpt Pte # _____	Cat:	E: _____	Ctns: _____	Wt(kg): _____
Split: Y/N	Mach: _____	U/P Int: _____	R/P Int: _____	R: _____	D: _____
Courier:					Total Wt(kg): _____

## Inner Tube is Coloured Pad/Digitally printed on clear case

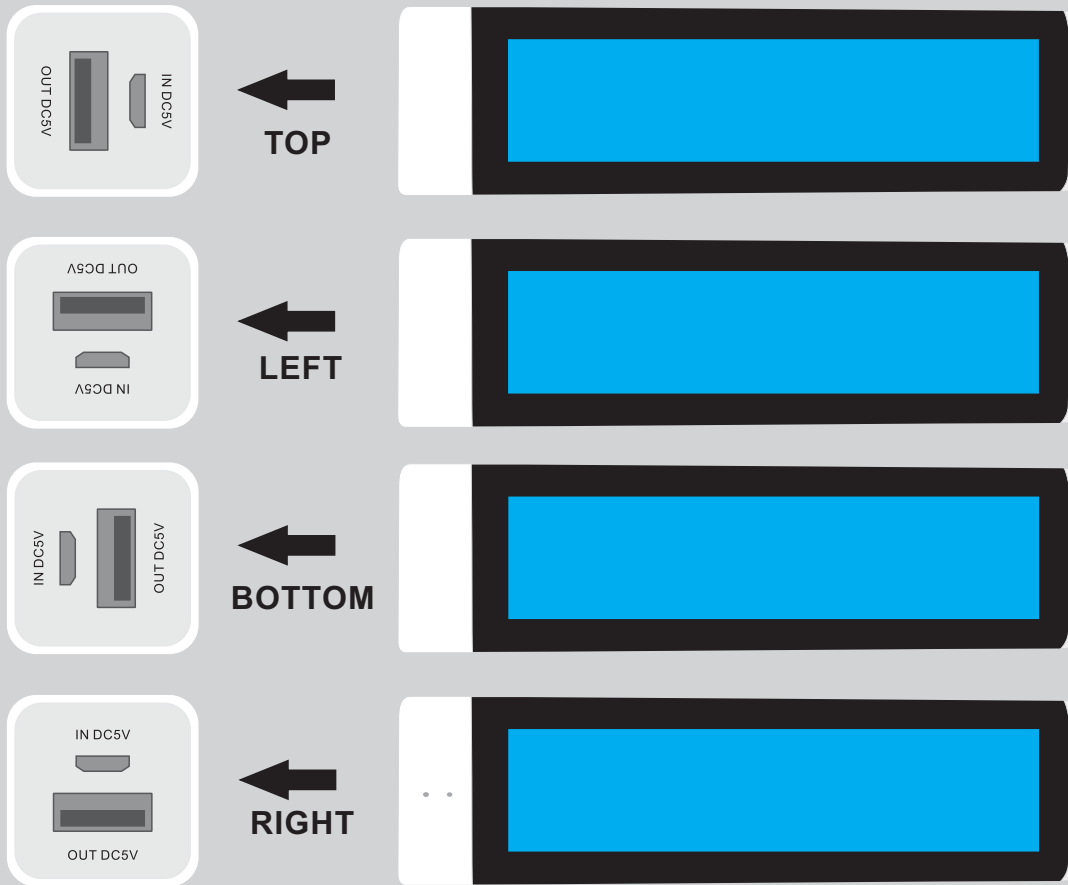


Maximum print area: 70mmL x 16mmH  
Actual print size:

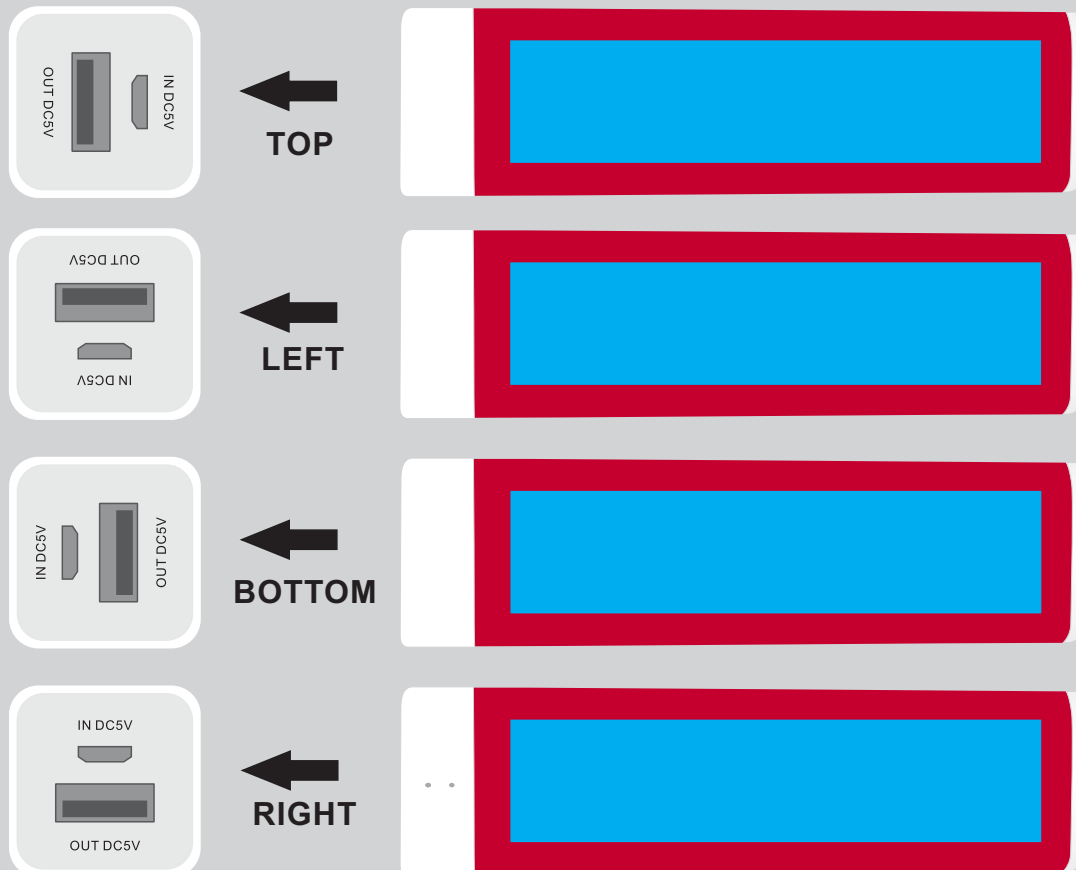


Maximum print area: 70mmL x 16mmH  
Actual print size:

## Inner Tube is Coloured Pad/Digitally printed on clear case



Maximum print area: 70mmL x 16mmH  
Actual print size:

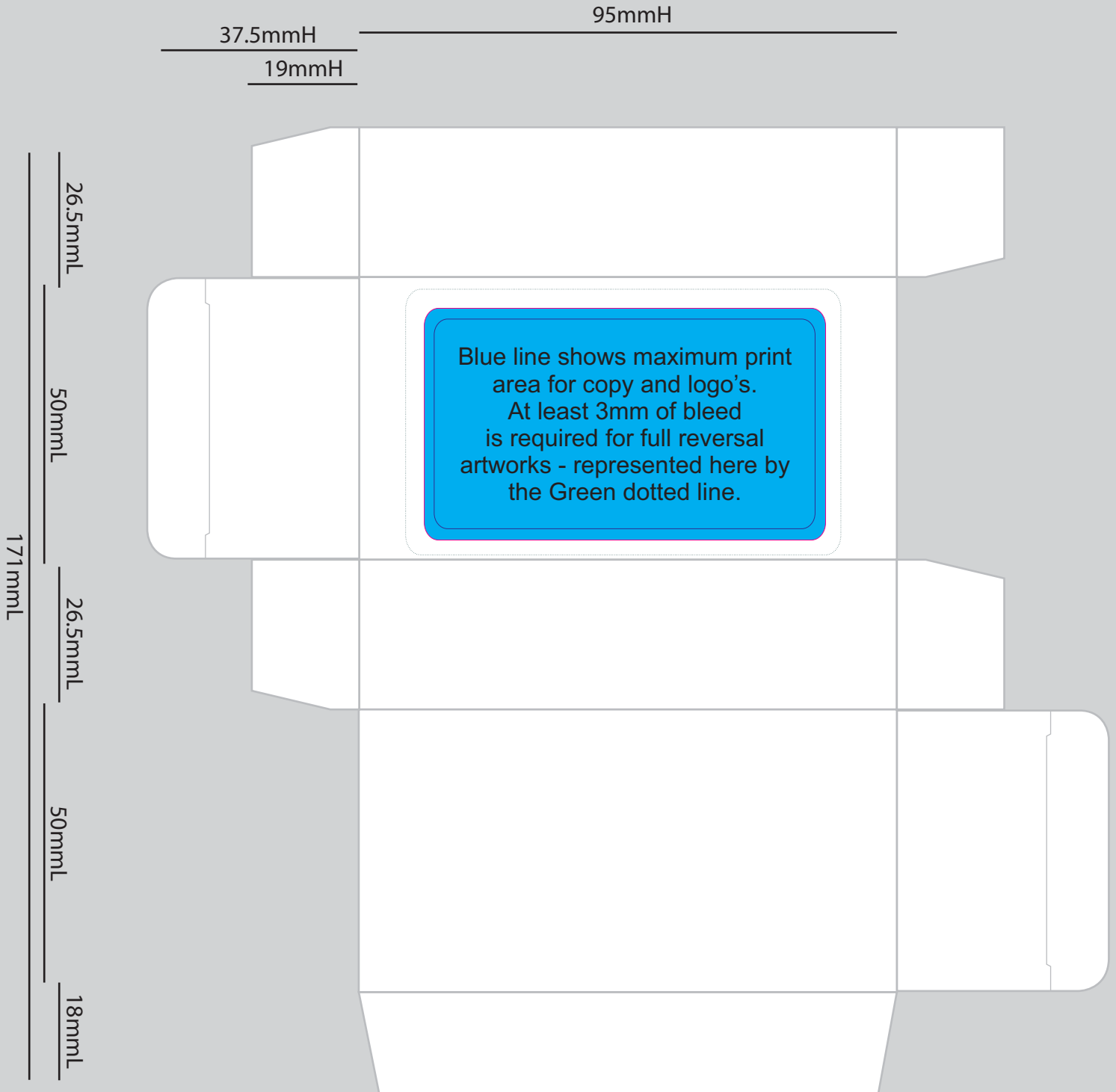


Maximum print area: 70mmL x 16mmH  
Actual print size:

**LABEL NOTE:**

Labels are applied by hand and although the greatest care is taken label positioning cannot be guaranteed across the entire order. They are digitally printed in CMYK. If pantone colour matching is important we require you to provide specific PMS colours, and we will produce closest CMYK colour match possible (to CP equivalent of coated pantone colours - perfect colour match not guaranteed). Vector art is required for colour matching. We are unable to edit colours in rasterized images. Print colours may be altered in appearance if placed on a strong colour background. Design position cannot be guaranteed across the entire order, some movement does occur during printing

## White gift box supplied with a Standard Label



Maximum print area: 71mmL x 41mmH

Actual print size:

Printed onto a white label. Pink border shows max label size and is not printed.