

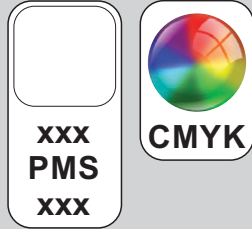


ARTWORK FOR APPROVAL

IMPORTANT: This drawing is for approximate print positional purposes only. It is not intended to be an exact scale or detailed representation of the product. Colour proofs are to be used as a guide only and not a true representation of true product or print colour. If item colours are important, order a sample from our current shipment.

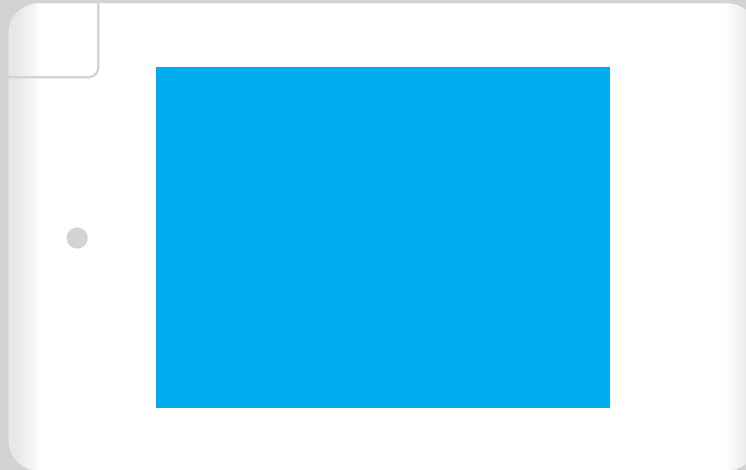
Order #
Proof #1
Date 00/00/00

Product Code : LN3009
Description : Picture Powercard Power Bank
Item Colour/s : White
Quantity :
Decoration Type : Pad + Digital Direct on Box
Print Colour

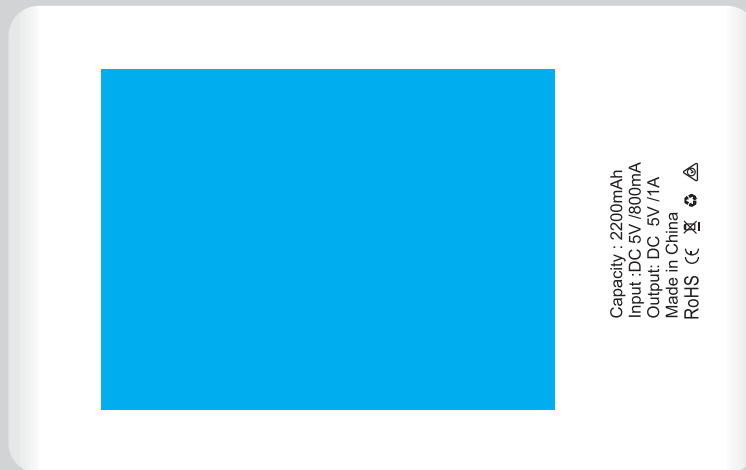


Maximum print area: 60mmL x 45mmH
Actual print size:

FRONT



BACK



Capacity : 2200mAh
Input: DC 5V /800mA
Output: DC 5V /1A
Made in China
RoHS (CE, REACH, WEEE symbols)

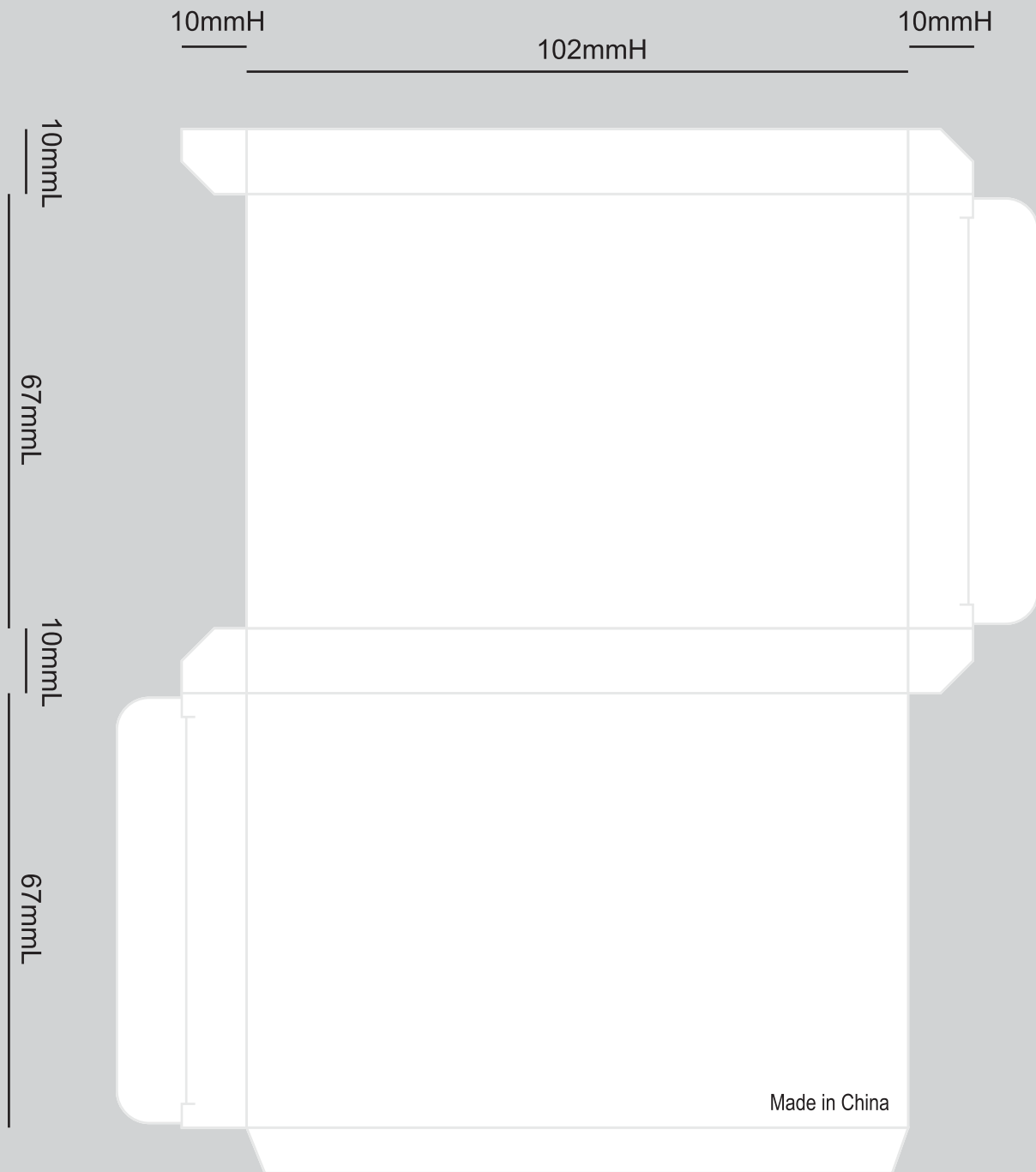
PLEASE SEE NEXT PAGE...

INTERNAL USE ONLY

INT:

QC Code:	New Pte # _____	Info:	Q: _____	Ctns: _____	Wt(kg): _____
PP:	Prt Int: _____	Prep:	S: _____	D: _____	
Rpt Ord:	Rpt Pte # _____	Cat:	E: _____	Ctns: _____	Wt(kg): _____
Splt: Y/N	Mach: _____	U/P Int: _____	R/P Int: _____	R: _____	D: _____
Courier:					Total Wt(kg): _____

White gift box is supplied digitally printed.



Please note: This item is digitally printed in CMYK.

If pantone colour matching is important we require you to provide specific PMS colours, and we will produce closest CMYK colour match possible (to CP equivalent of coated pantone colours - perfect colour match not guaranteed). Vector art is required for colour matching. We are unable to edit colours in rasterized images. Print colours may be altered in appearance if placed on a strong colour background.