



ARTWORK FOR APPROVAL

IMPORTANT: This drawing is for approximate print positional purposes only. It is not intended to be an exact scale or detailed representation of the product. Colour proofs are to be used as a guide only and not a true representation of true product or print colour. If item colours are important, order a sample from our current shipment.

Order #
Proof #1
Date 00/00/00

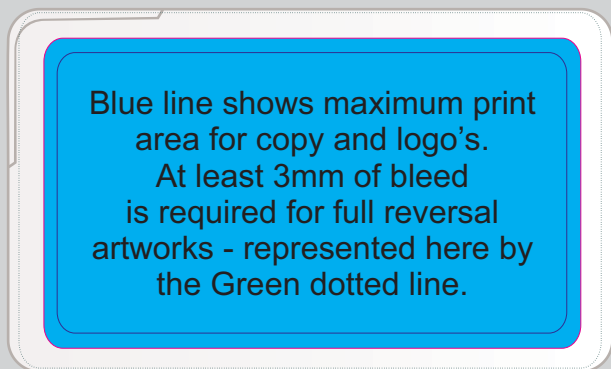
Product Code : LN077
Description : Rectangular Sugar Free Breath Mints
Item Colour/s : White
Quantity :
Decoration Type : Standard Label
Print Colour



LABEL NOTE:

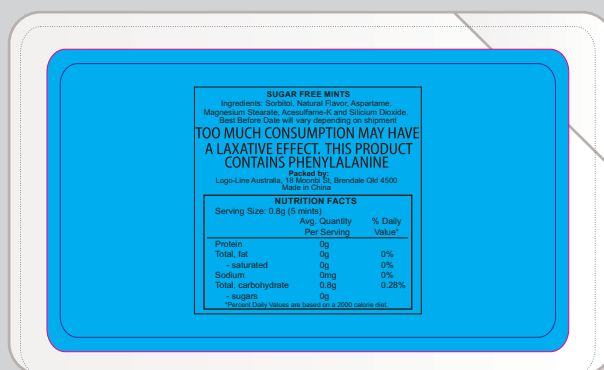
Labels are applied by hand and although the greatest care is taken label positioning cannot be guaranteed across the entire order. They are digitally printed in CMYK. If pantone colour matching is important we require you to provide specific PMS colours, and we will produce closest CMYK colour match possible (to CP equivalent of coated pantone colours - perfect colour match not guaranteed). Vector art is required for colour matching. We are unable to edit colours in rasterized images. Print colours may be altered in appearance if placed on a strong colour background. Design position cannot be guaranteed across the entire order, some movement does occur during printing

Mandatory text must be included in design.



Blue line shows maximum print area for copy and logo's. At least 3mm of bleed is required for full reversal artworks - represented here by the Green dotted line.

Maximum label size:
 71mmL x 41mmH
 Actual print size:
 Printed onto a white label.
 Pink border shows label size and will not be printed.



SUGAR FREE MINTS
 Ingredients: Sucralose, Natural Flavour, Aspartame, Magnesium Stearate, Acesulfame-K and Silicon Dioxide. Best Before Date will vary depending on shipment.
TOO MUCH CONSUMPTION MAY HAVE A LAXATIVE EFFECT. THIS PRODUCT CONTAINS PHENYLALANINE
 Picked by:
 Logo-Line Australia, 18 Moorook St, Brendale Qld 4500
 Made in China

NUTRITION FACTS			
Serving Size: 0.8g (5 mints)			
	Avg. Quantity Per Serving	% Daily Value*	
Protein	0g		
Total fat	0g	0%	
- saturated	0g	0%	
Sodium	0mg	0%	
Total carbohydrate	0.8g	0.25%	
- sugars	0g		

*Percent Daily Values are based on a 2000 calorie diet.

Maximum label size:
 69mmL x 40mmH
 Actual print size:

INTERNAL USE ONLY

INT:

QC Code: _____ New Pte # _____ Info: _____ Q: _____ Ctns: _____ Wt(kg): _____
 PP: _____ Prt Int: _____ Prep: _____ S: _____ D: _____
 Rpt Ord: _____ Rpt Pte # _____ Cat: _____ E: _____ Ctns: _____ Wt(kg): _____
 Split: Y/N _____ Mach: _____ U/P Int: _____ R/P Int: _____ R: _____ D: _____
 Courier: _____ Total Wt(kg): _____