



ARTWORK FOR APPROVAL

IMPORTANT: This drawing is for approximate print positional purposes only. It is not intended to be an exact scale or detailed representation of the product. Colour proofs are to be used as a guide only and not a true representation of true product or print colour. If item colours are important, order a sample from our current shipment.

Order #
Proof #1
Date 00/00/00

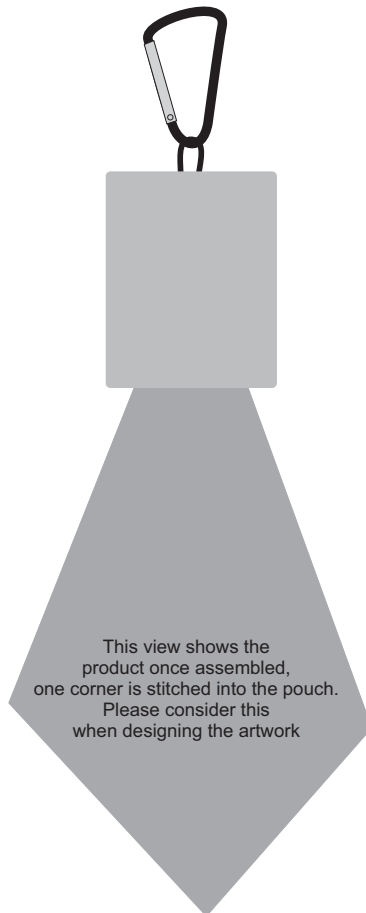
Product Code : LN0701
Description : Custom Superior Hi Microfibre Lens Cloth in Pouch with Carabiner
Item Colour/s : Custom
Quantity :
Decoration Type : Sublimation
Print Colour



Please note: These lens cloth's are printed in CMYK. If pantone colour matching is important we require you to provide specific PMS colours, and we will produce closest CMYK colour match possible (perfect colour match not guaranteed). We are unable to edit colours in rasterized images.

BELOW IS 50% OF ACTUAL SIZE

Final Layout



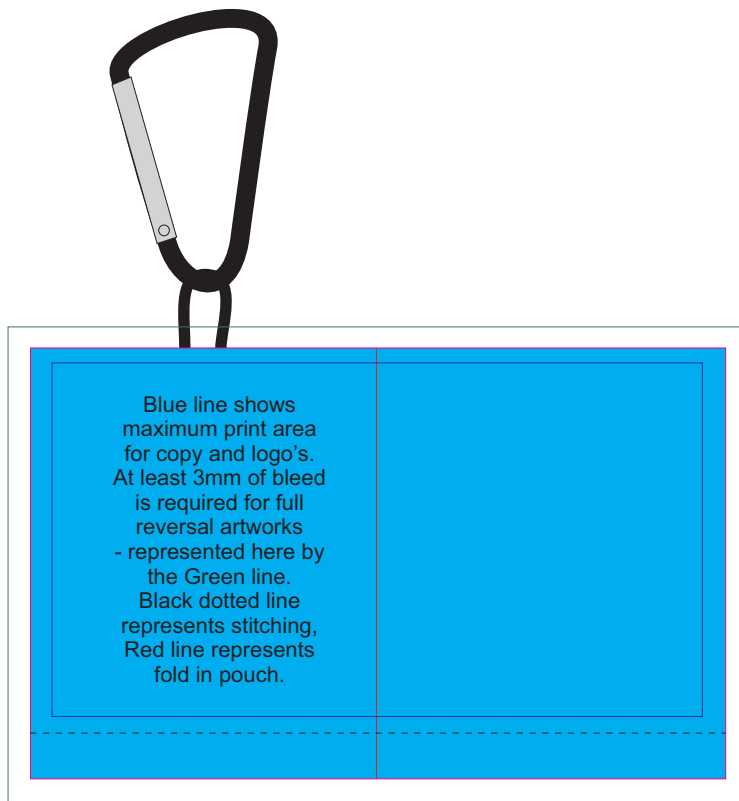
NOTE:
The country of origin is required on this product. The below label is applied to all lens cloth packaging.

PLEASE SEE NEXT PAGE...

INTERNAL USE ONLY

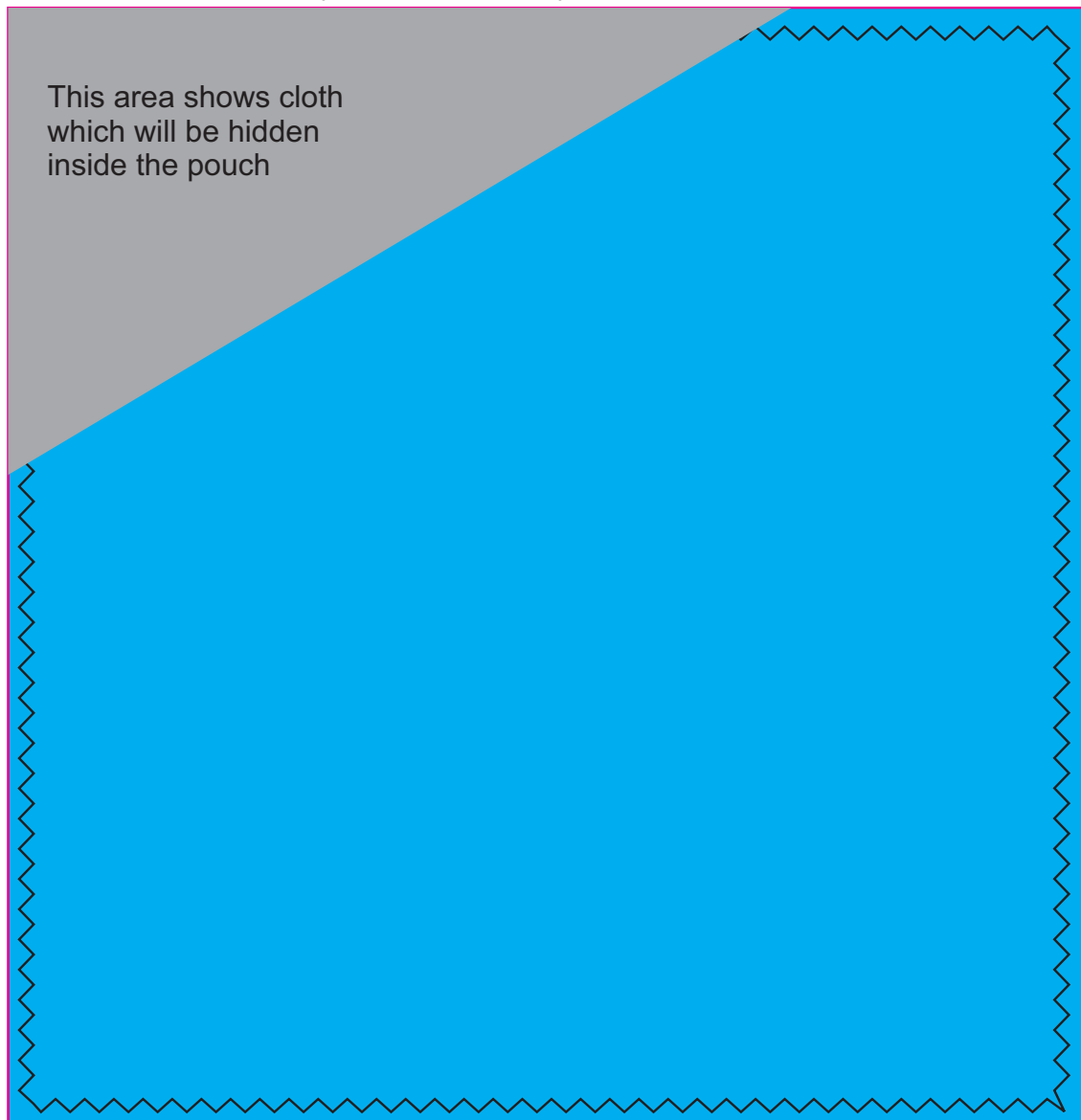
INT:

QC Code:	New Pte # _____	Info:	Q: _____	Ctns: _____	Wt(kg): _____
PP:	Prt Int: _____	Prep:	S: _____	D: _____	
Rpt Ord:	Rpt Pte # _____	Cat:	E: _____	Ctns: _____	Wt(kg): _____
Split: Y/N	Mach: _____	U/P Int: _____	R/P Int: _____	R: _____	D: _____
Courier:					Total Wt(kg): _____



Maximum Print Area: 92mmL x 57mmH
Actual Print Size:
Printed onto a White surface.

Pink outline shows bleed required and will not be printed.



Maximum Print Area: 145mmL x 150mmH
Actual Print Size:
Printed onto a White surface.