



ARTWORK FOR APPROVAL

IMPORTANT: This drawing is for approximate print positional purposes only. It is not intended to be an exact scale or detailed representation of the product. Colour proofs are to be used as a guide only and not a true representation of true product or print colour. If item colours are important, order a sample from our current shipment.

Order #
Proof #1
Date 00/00/00

Product Code : LL9455
Description : Soundbar Bluetooth Speaker + Sleeve
Item Colour/s : Black/Silver
Quantity :
Decoration Type : Digital Direct + Sleeve
Print Colour



Direct digital designs are printed in CMYK.
Pantone colours will be produced in the closest CMYK colour match possible.

IMPORTANT
HOLES IN THE GRILL CAN OVERPOWER THE DESIGN
AND MAKE TEXT AND SOME DETAILS HARD TO READ.

BELOW IS 20% OF ACTUAL SIZE

Digitally printed Sleeve

Top of Speaker

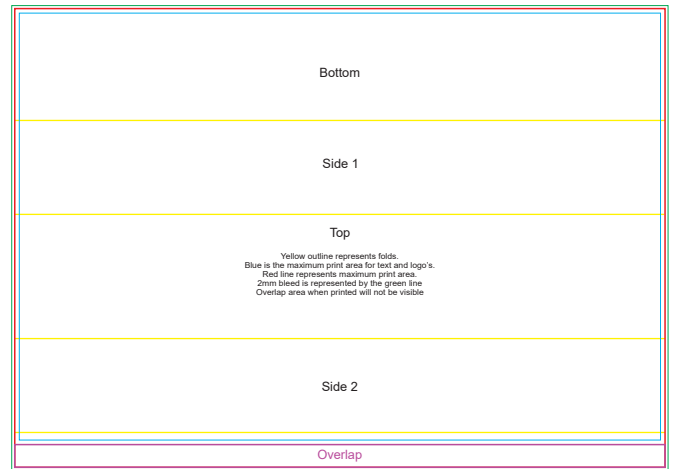


Maximum print area: Top: 300mmL x 30mmH
Actual print size:

Front - Grill



Maximum print area: Grill: 347mmL x 42mmH
(Font type must be at least 14 points)
Actual print size:



Maximum print area: 429mmL x 303mmH
Actual print size:

INTERNAL USE ONLY

INT:

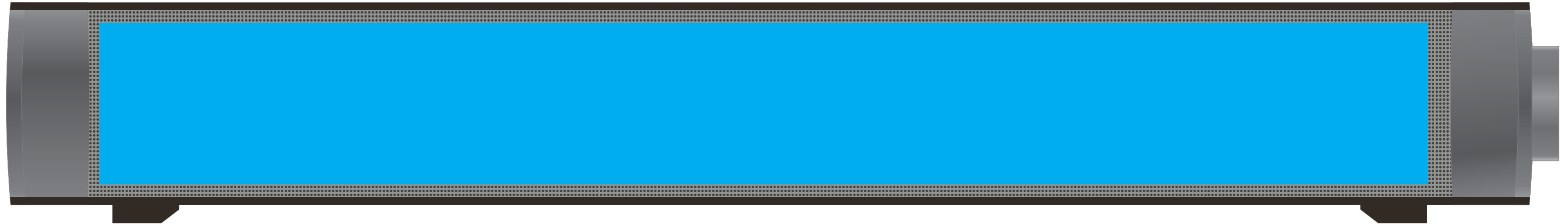
QC Code:	New Pte # _____	Info:	Q: _____	Ctns: _____	Wt(kg): _____
PP:	Prt Int: _____	Prep:	S: _____	D: _____	
Rpt Ord:	Rpt Pte # _____	Cat:	E: _____	Ctns: _____	Wt(kg): _____
Split: Y/N	Mach: _____	U/P Int: _____	R/P Int: _____	R: _____	D: _____
Courier:					Total Wt(kg): _____

Top of Speaker



Maximum print area: Top: 300mmL x 30mmH
Actual print size:

Front - Grill



Maximum print area: Grill: 347mmL x 42mmH (Font type must be at least 14 points)
Actual print size:

Digitally printed Sleeve

Direct digital designs are printed in CMYK.
Pantone colours will be produced in the closest CMYK colour match possible.

Bottom

Side 1

Top

Yellow outline represents folds.
Blue is the maximum print area for text and logo's.
Red line represents maximum print area.
2mm bleed is represented by the green line
Overlap area when printed will not be visible

Side 2

Overlap