



# ARTWORK FOR APPROVAL

**IMPORTANT:** This drawing is for approximate print positional purposes only. It is not intended to be an exact scale or detailed representation of the product. Colour proofs are to be used as a guide only and not a true representation of true product or print colour. If item colours are important, order a sample from our current shipment.

Order #  
Proof #1  
Date 00/00/00

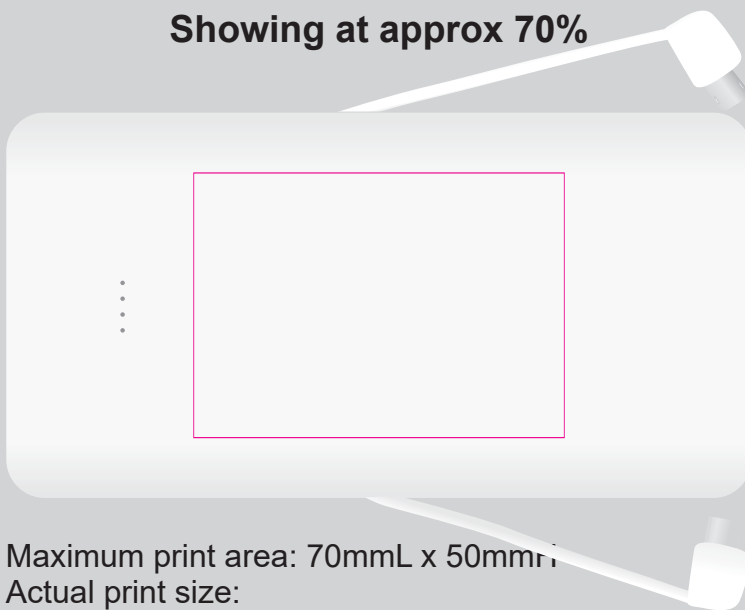
**Product Code** : LL9207 + LL6674  
**Description** : Maximus Inductive Charger Power Bank + Medium Low Profile Eva Case 38mmH  
**Item Colour/s** : White + Black  
**Quantity** :  
**Decoration Type** : Pad (Powerbank) + Direct Digital (Eva Case)  
**Print Colour**



Direct digital designs are printed in CMYK.  
Pantone colours will be produced in the closest CMYK colour match possible.

**PLEASE NOTE:** EVA cases are hand stitched therefore variations in size and shape of the item will occur. Print position cannot be guaranteed across the entire order and is considered acceptable.

Showing at approx 70%

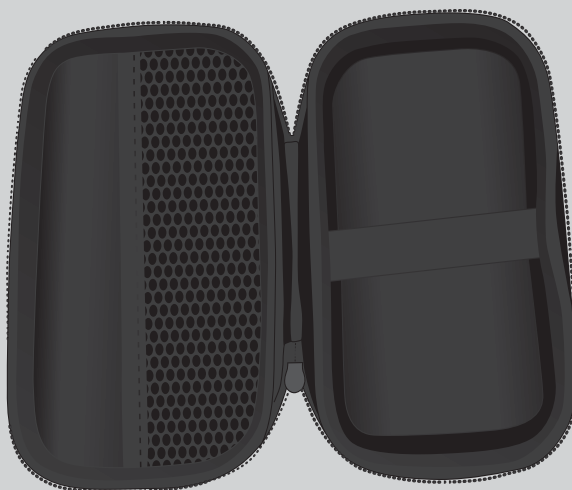


Maximum print area: 70mmL x 50mmH  
Actual print size:

Showing at approx 40%



Maximum print area: 100mmL x 50mmH  
Actual print size:

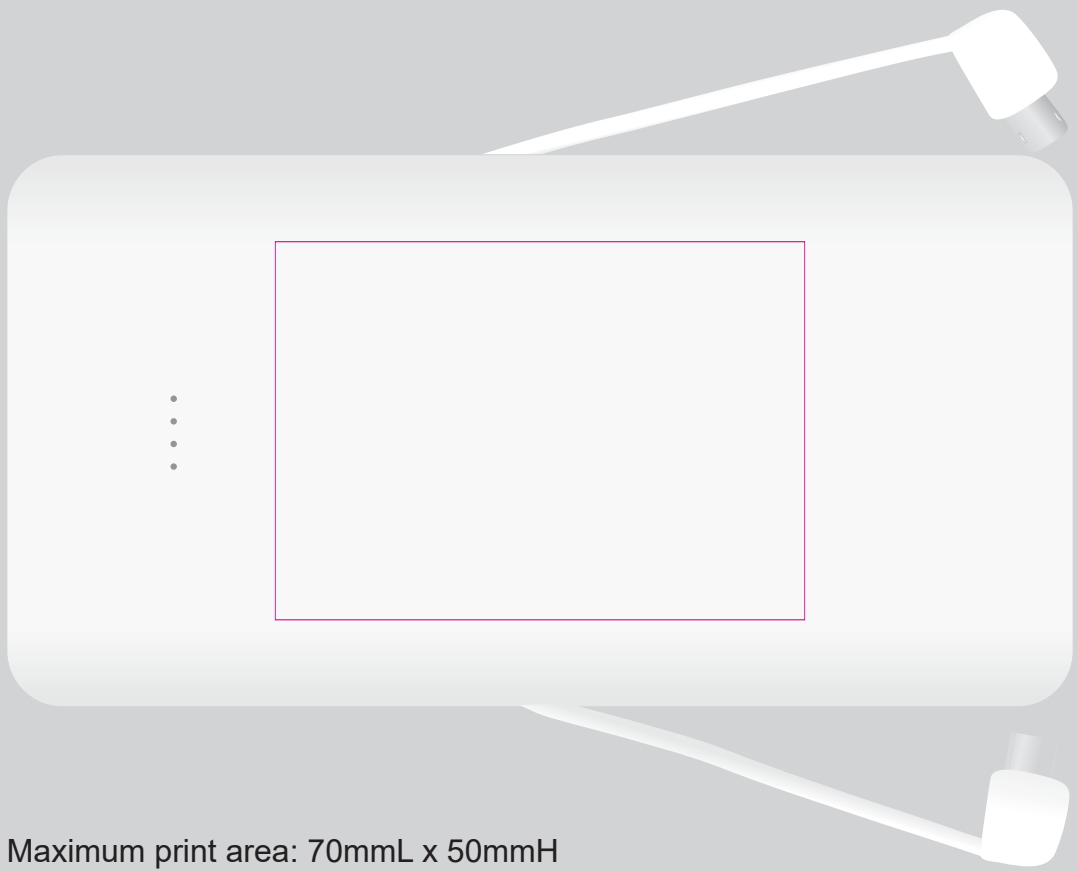


**PLEASE SEE NEXT PAGE...**

### INTERNAL USE ONLY

INT:

QC Code:	New Pte # _____	Info:	<b>MSDS-DG</b>	Ctns: _____	Wt(kg): _____
PP:	Prt Int: _____	Prep:	Q: _____	D: _____	
Rpt Ord:	Rpt Pte # _____	Cat:	S: _____	Ctns: _____	Wt(kg): _____
Split: Y/N	Mach: _____	U/P Int: _____	R/P Int: _____	E: _____	D: _____
Courier:			R: _____	Total Wt(kg): _____	



Maximum print area: 70mmL x 50mmH  
Actual print size:



# ARTWORK FOR APPROVAL

**IMPORTANT:** This drawing is for approximate print positional purposes only. It is not intended to be an exact scale or detailed representation of the product. Colour proofs are to be used as a guide only and not a true representation of true product or print colour. If item colours are important, order a sample from our current shipment.

Order #  
 Proof #1  
 Date 00/00/00

**Product Code** : LL9207 + LL6674  
**Description** : Maximus Inductive Charger Power Bank + Medium Low Profile Eva Case 38mmH  
**Item Colour/s** : White + Black  
**Quantity** :  
**Decoration Type** : Digital Direct (Powerbank) + Screen Print (Eva Case)  
**Print Colour**



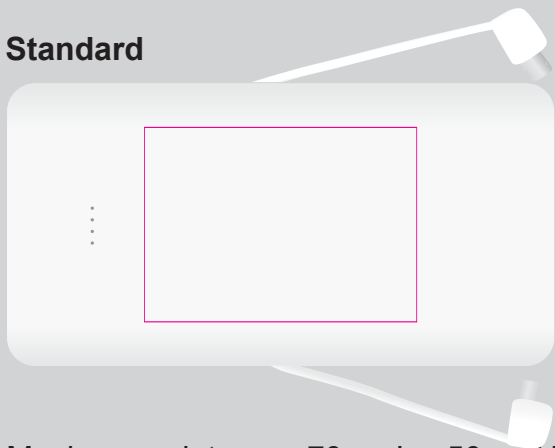
Direct digital designs are printed in CMYK. Pantone colours will be produced in the closest CMYK colour match possible.

**PLEASE NOTE:** EVA cases are hand stitched therefore variations in size and shape of the item will occur. Print position cannot be guaranteed across the entire order and is considered acceptable.

## Showing at approx 50% of actual size

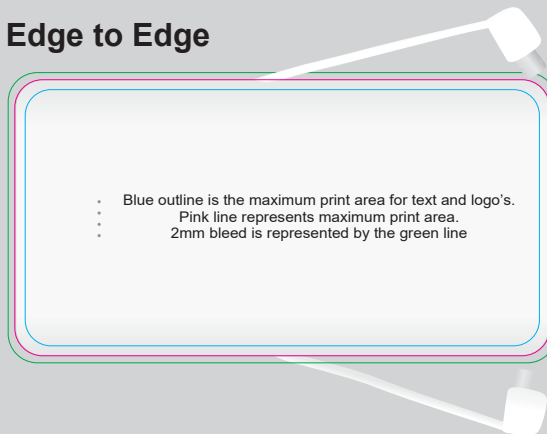
Slight over spray of ink may appear on sides of item if a full reversal is printed

**Standard**



Maximum print area: 70mmL x 50mmH  
 Actual print size:

**Edge to Edge**



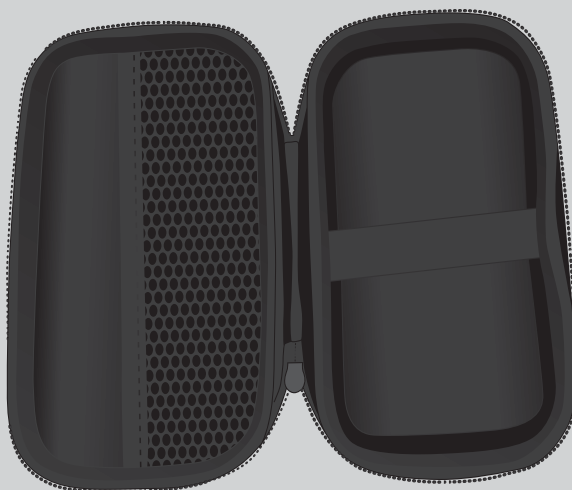
Blue outline is the maximum print area for text and logo's.  
 Pink line represents maximum print area.  
 2mm bleed is represented by the green line

Maximum print area: 140mmL x 73mmH  
 Actual print size:

## Showing at approx 40%



Maximum print area: 100mmL x 50mmH  
 Actual print size:



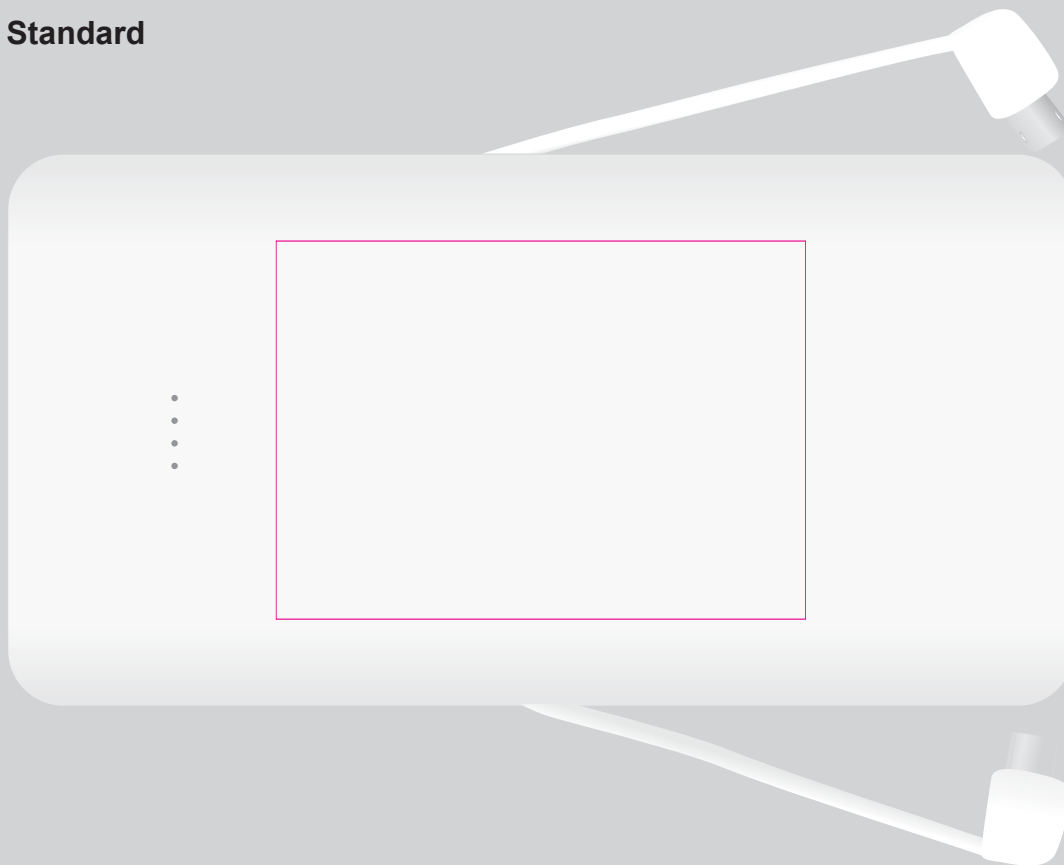
**PLEASE SEE NEXT PAGE...**

**INTERNAL USE ONLY**

INT:

QC Code:	New Pte # _____	Info:	<b>MSDS-DG</b>	Ctns: _____	Wt(kg): _____
PP:	Prt Int: _____	Prep:	Q: _____	D: _____	
Rpt Ord:	Rpt Pte # _____	Cat:	S: _____	Ctns: _____	Wt(kg): _____
Split: Y/N	Mach: _____	U/P Int: _____	R/P Int: _____	E: _____	D: _____
Courier:			R: _____	Total Wt(kg): _____	

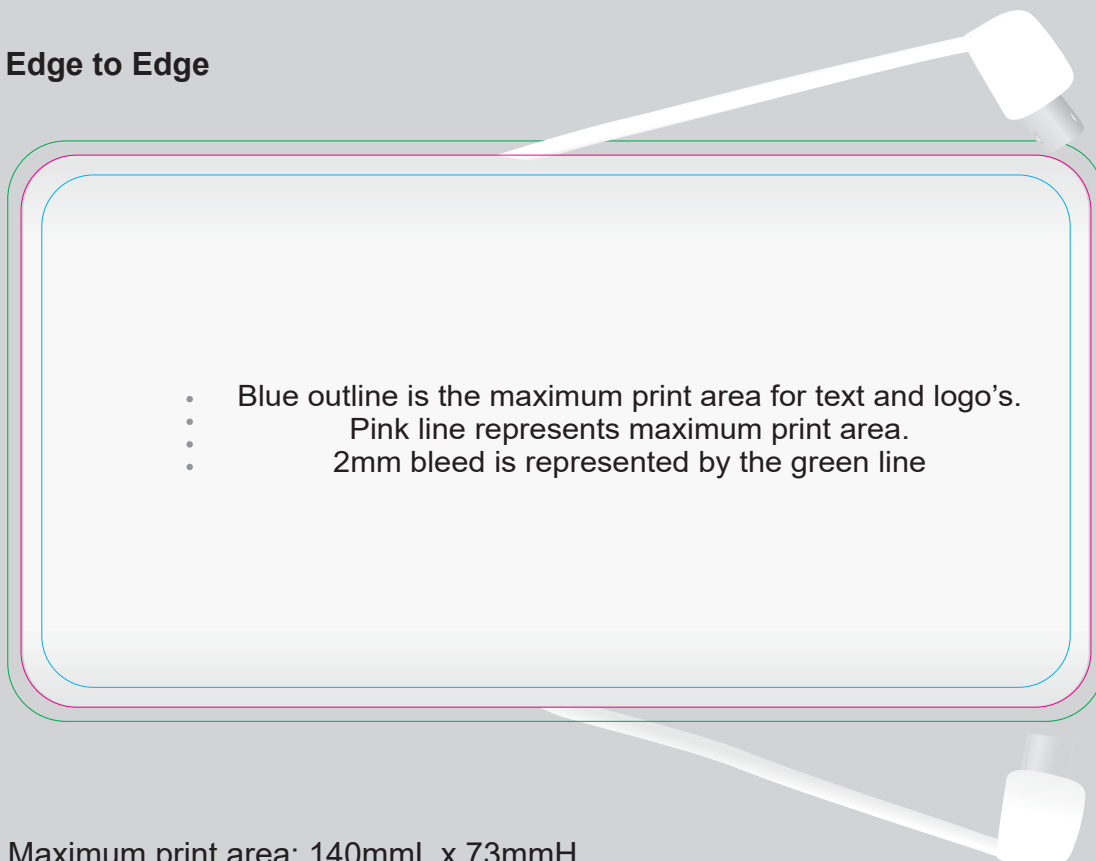
## Standard



Maximum print area: 70mmL x 50mmH  
Actual print size:

Slight over spray of ink may appear on sides of item if a full reversal is printed

## Edge to Edge



- Blue outline is the maximum print area for text and logo's.
- Pink line represents maximum print area.
- 2mm bleed is represented by the green line

Maximum print area: 140mmL x 73mmH  
Actual print size:



# ARTWORK FOR APPROVAL

**IMPORTANT:** This drawing is for approximate print positional purposes only. It is not intended to be an exact scale or detailed representation of the product. Colour proofs are to be used as a guide only and not a true representation of true product or print colour. If item colours are important, order a sample from our current shipment.

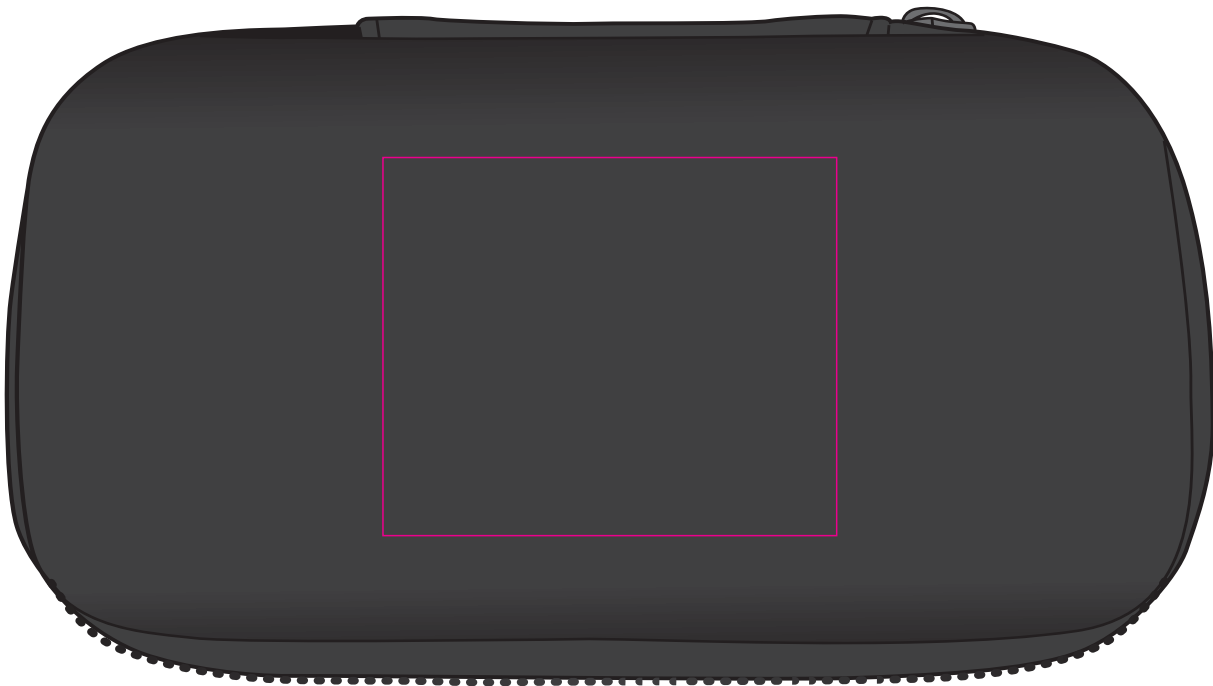
Order #  
Proof #1  
Date 00/00/00

Product Code : LL6674  
Description : Medium EVA Zipper Case Low Profile 38mmH  
Item Colour/s : Black  
Quantity :  
Decoration Type : Direct Digital  
Print Colour



**PLEASE NOTE:** EVA cases are hand stitched therefore variations in size and shape of the item will occur. Print position cannot be guaranteed across the entire order and is considered acceptable.

Direct digital designs are printed in CMYK.  
Pantone colours will be produced in the closest CMYK colour match possible.



Maximum print area: 60mmL x 50mmH  
Actual print size:

### INTERNAL USE ONLY

INT:

QC Code:	New Pte # _____	Info:	<b>MSDS-DG</b>	Ctns: _____	Wt(kg): _____
PP:	Prt Int: _____	Prep:	Q: _____	D: _____	
Rpt Ord:	Rpt Pte # _____	Cat:	S: _____	Ctns: _____	Wt(kg): _____
Split: Y/N	Mach: _____	U/P Int: _____	R/P Int: _____	E: _____	D: _____
Courier:			R: _____	Total Wt(kg): _____	

