



ARTWORK FOR APPROVAL

IMPORTANT: This drawing is for approximate print positional purposes only. It is not intended to be an exact scale or detailed representation of the product. Colour proofs are to be used as a guide only and not a true representation of true product or print colour. If item colours are important, order a sample from our current shipment.

Order #
Proof #1
Date 00/00/00

Product Code : LL9109
Description : Aluminium Velocity Mobile Phone Power Bank
Item Colour/s : Black, Blue, Green, Orange, Purple, Red, Silver, White
Quantity :
Decoration Type : Digital Direct
Print Colour :



Standard Inclusions



Micro USB Cable



IMPORTANT

When printing edge to edge we can only print on 1 or 2 sides and they must be opposite sides of the item we are not able to print edge to edge on all sides.

PLEASE NOTE

Position of ☺ varies between shipments. Position of symbol cannot be guaranteed.

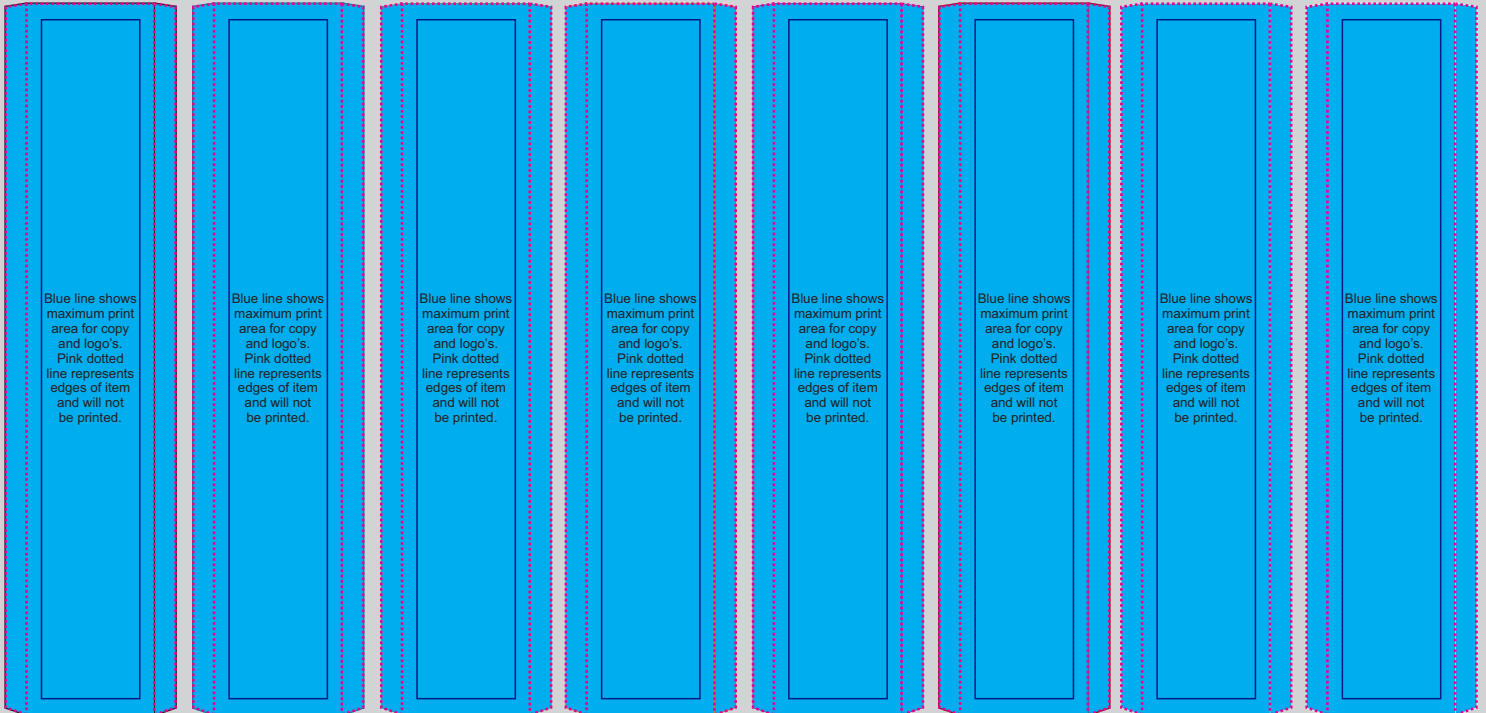
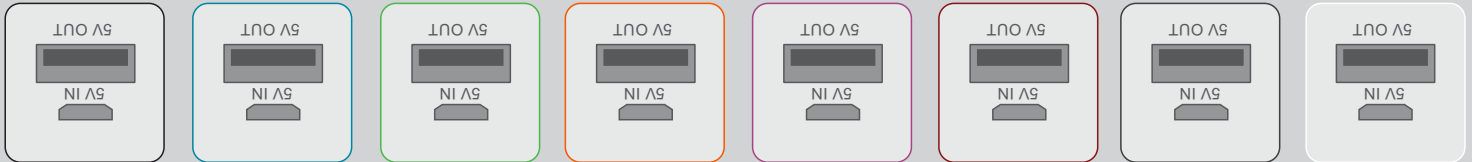
Print will always be on opposite side of symbol unless otherwise advised.

Colour of Aluminium casing can vary 10% plus or minus within the same shipment and is considered acceptable.

DIGITAL DIRECT: This item is digitally printed in CMYK.

If pantone colour matching is important we require you to provide specific PMS colours, and we will produce closest CMYK colour match possible (to CP equivalent of coated pantone colours - perfect colour match not guaranteed). Vector art is required for colour matching. We are unable to edit colours in rasterized images.

Print colours may be altered in appearance if placed on a strong colour background.



Maximum print area: (edge to edge) 94mmL x 22mmH

Actual print size:

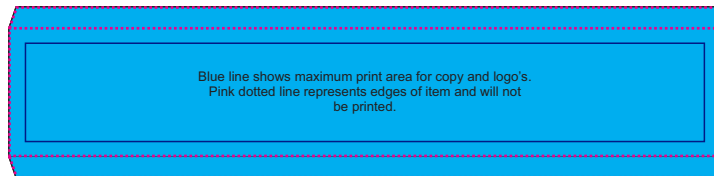
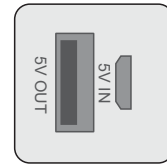
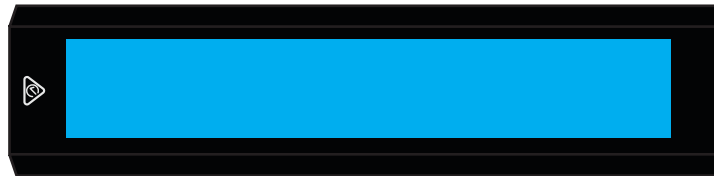
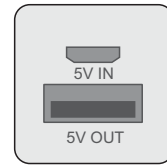
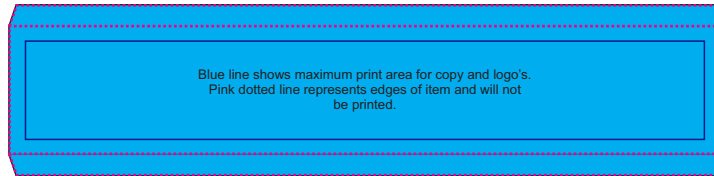
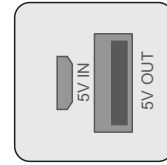
PLEASE SEE NEXT PAGE...

INTERNAL USE ONLY

INT:

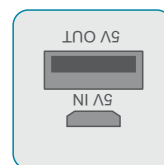
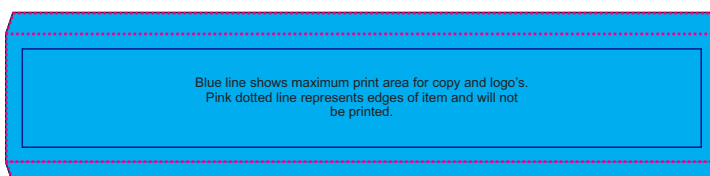
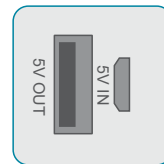
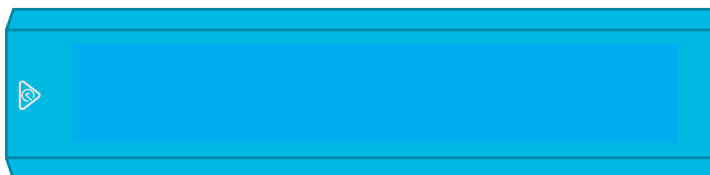
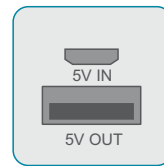
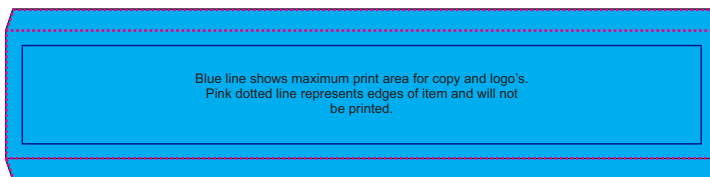
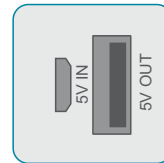
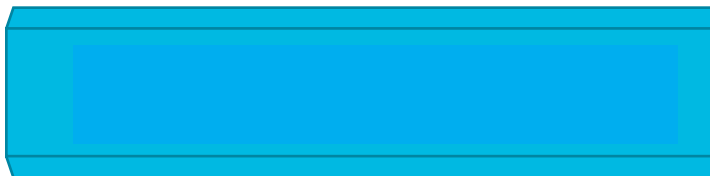
QC Code:	New Pte # _____	Info:	Q: _____	Ctns: _____	Wt(kg): _____
PP:	Prt Int: _____	Prep:	S: _____	D: _____	
Rpt Ord:	Rpt Pte # _____	Cat:	E: _____	Ctns: _____	Wt(kg): _____
Split: Y/N	Mach: _____	U/P Int: _____	R/P Int: _____	R: _____	D: _____
Courier:					Total Wt(kg): _____

Black



Maximum print area: (edge to edge) 94mmL x 22mmH or 80mmL x 13mmH
Actual print size:

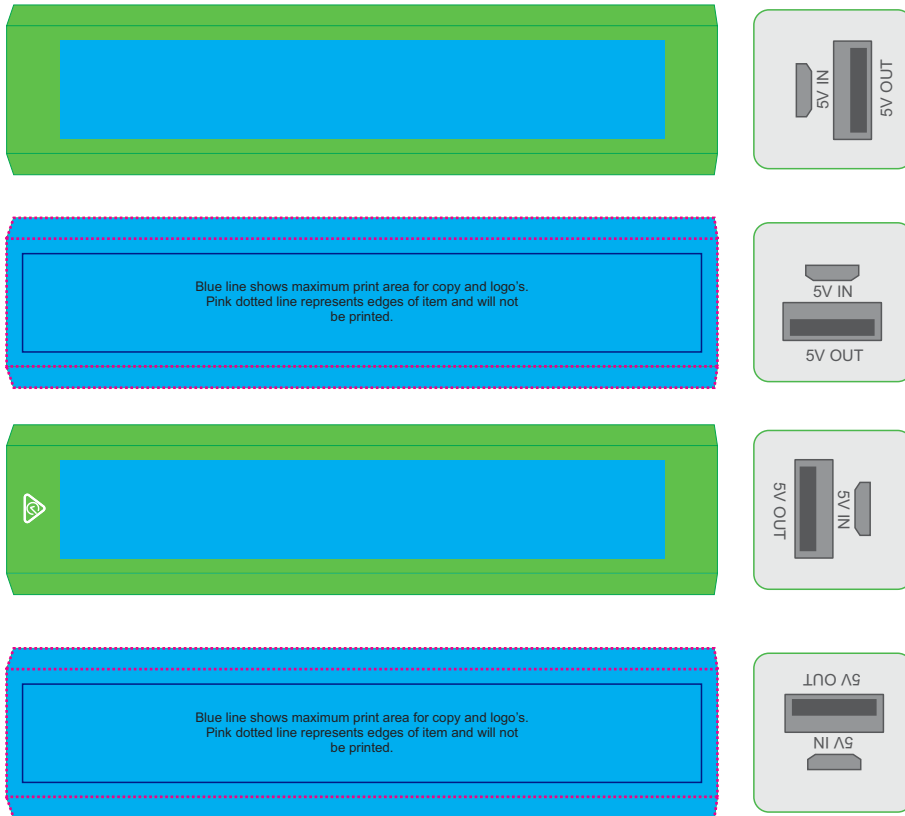
Blue



Maximum print area: (edge to edge) 94mmL x 22mmH or 80mmL x 13mmH
Actual print size:

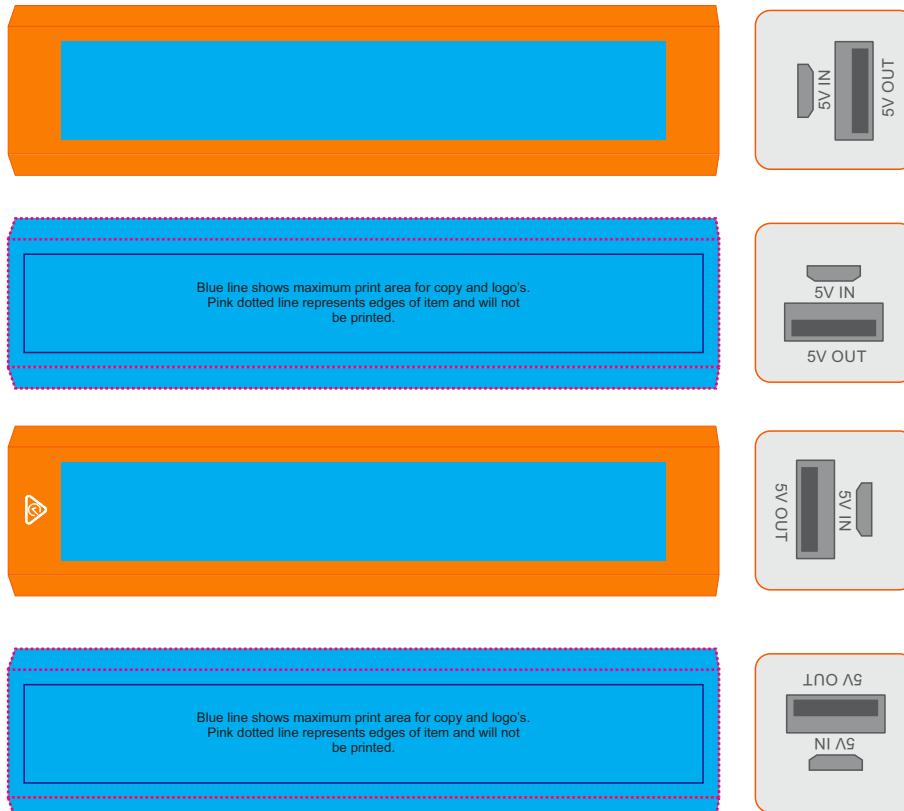
PLEASE SEE NEXT PAGE...

Green



Maximum print area: (edge to edge) 94mmL x 22mmH or 80mmL x 13mmH
Actual print size:

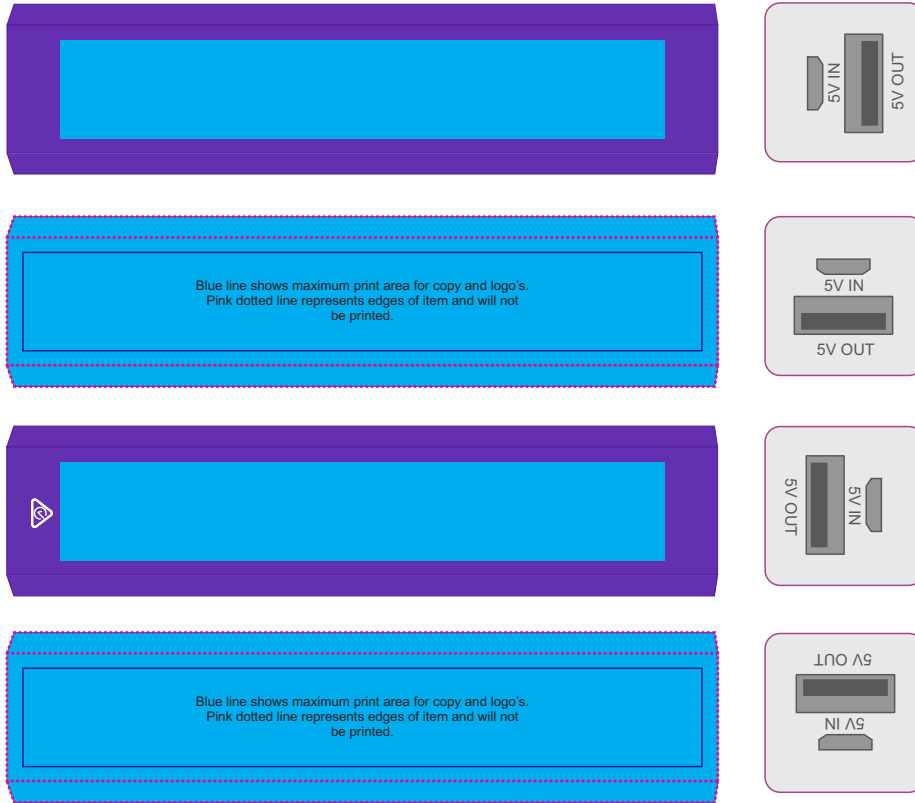
Orange



Maximum print area: (edge to edge) 94mmL x 22mmH or 80mmL x 13mmH
Actual print size:

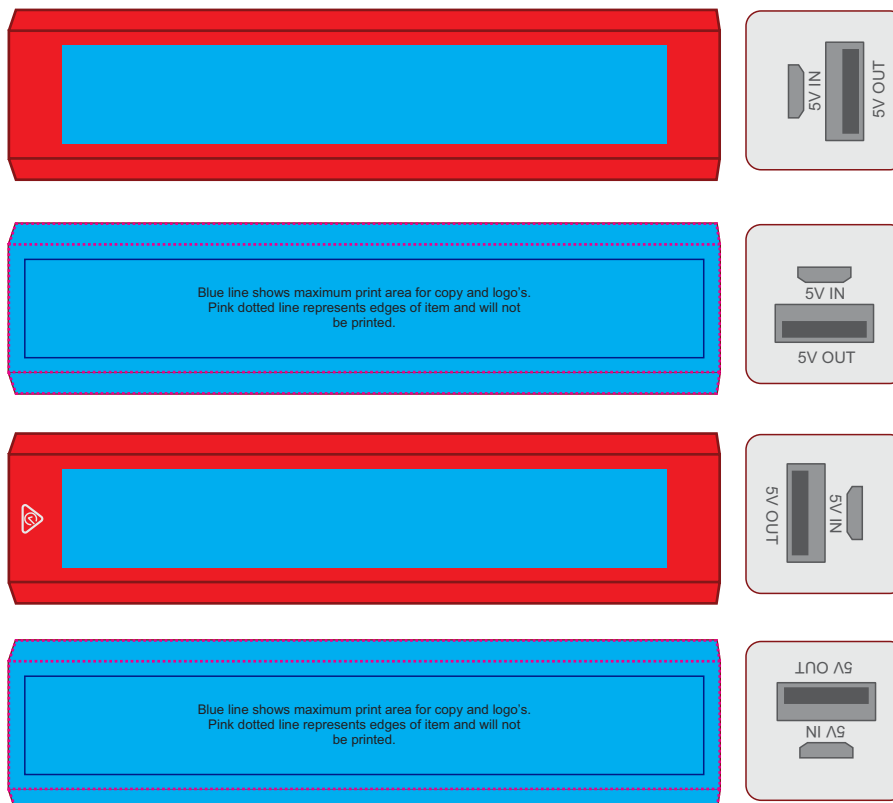
PLEASE SEE NEXT PAGE...

Purple



Maximum print area: (edge to edge) 94mmL x 22mmH or 80mmL x 13mmH
Actual print size:

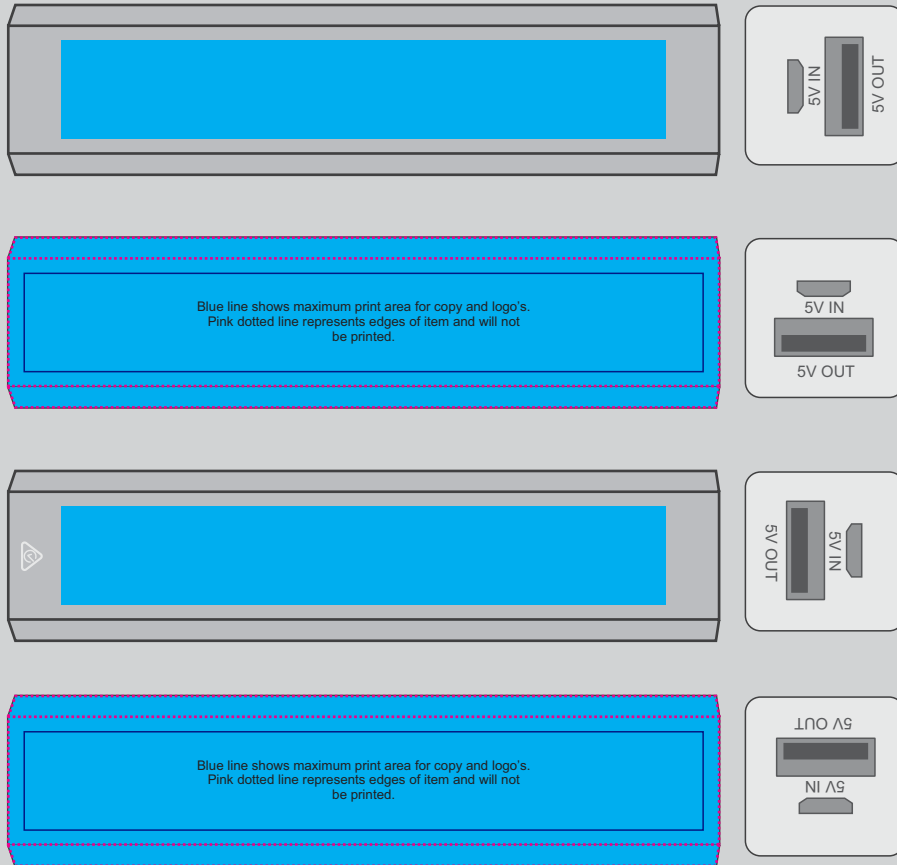
Red



Maximum print area: (edge to edge) 94mmL x 22mmH or 80mmL x 13mmH
Actual print size:

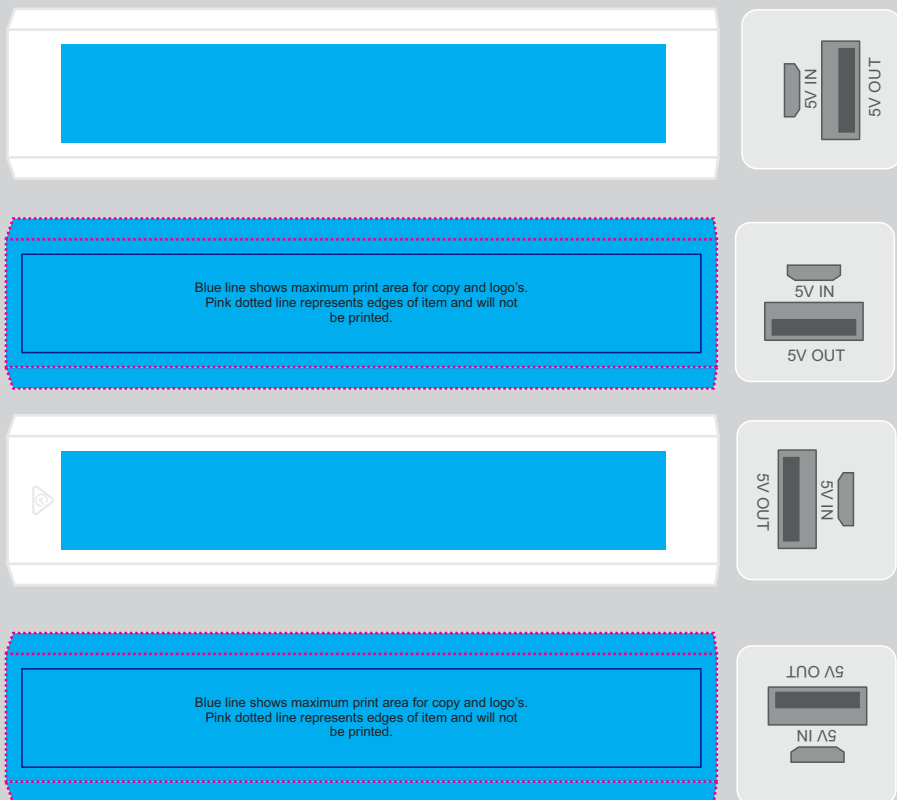
PLEASE SEE NEXT PAGE...

Silver



Maximum print area: (edge to edge) 94mmL x 22mmH or 80mmL x 13mmH
Actual print size:

White



Maximum print area: (edge to edge) 94mmL x 22mmH or 80mmL x 13mmH
Actual print size: