

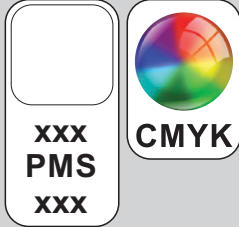


ARTWORK FOR APPROVAL

IMPORTANT: This drawing is for approximate print positional purposes only. It is not intended to be an exact scale or detailed representation of the product. Colour proofs are to be used as a guide only and not a true representation of true product or print colour. If item colours are important, order a sample from our current shipment.

Order #
Proof #1
Date 00/00/00

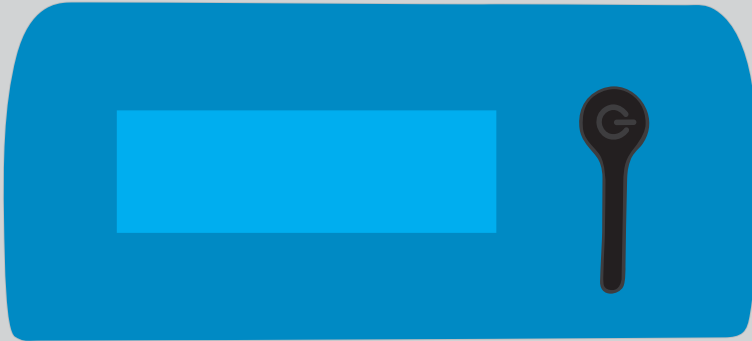
Product Code : LL9101
Description : Curve Tablet Phone Power Bank
Item Colour : Black/Black, Blue/Black
Quantity :
Decoration Type : Pad (Power Bank) + Standard Label (Box)
Print Colour



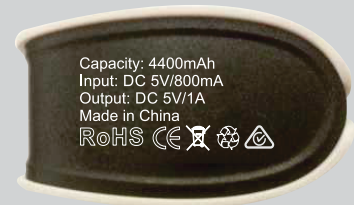
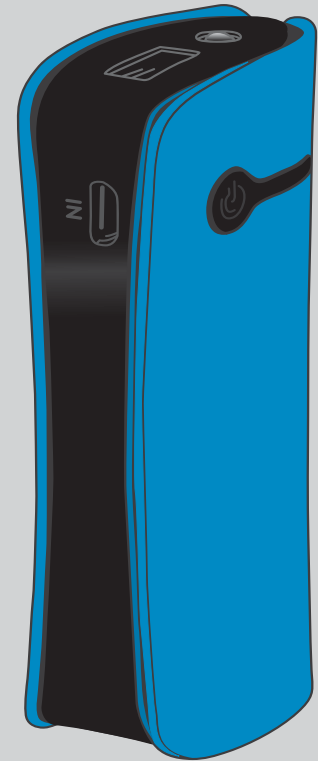
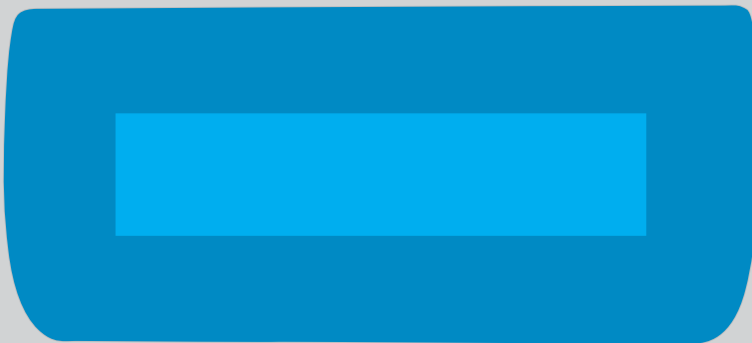
Supplied Cable

3 in 1 Cable
USB - Micro USB, 8 Pin & 30 pin

FRONT



BACK



Maximum print area: Front: 50mmL x 16mmH or Back: 70mmL x 16mmH
Actual print size:

PLEASE SEE NEXT PAGE...

INTERNAL USE ONLY

INT:

QC Code:	New Pte # _____	Info:	MSDS-DG	Ctns: _____	Wt(kg): _____
PP:	Prt Int: _____	Prep:	Q: _____	D: _____	
Rpt Ord:	Rpt Pte # _____	Cat:	S: _____	Ctns: _____	Wt(kg): _____
Split: Y/N	Mach: _____	U/P Int: _____	R/P Int: _____	E: _____	D: _____
Courier:			R: _____	Total Wt(kg): _____	



ARTWORK FOR APPROVAL

IMPORTANT: This drawing is for approximate print positional purposes only. It is not intended to be an exact scale or detailed representation of the product. Colour proofs are to be used as a guide only and not a true representation of true product or print colour. If item colours are important, order a sample from our current shipment.


Order #
Proof #1
Date 00/00/00

Product Code : LL9101
Description : Curve Tablet Phone Power Bank
Item Colour : Black/Black, Blue/Black
Quantity :
Decoration Type : Digital Direct (Power Bank) + Standard Label (Box)
Print Colour



Supplied Cable

3 in 1 Cable
USB - Micro USB, 8 Pin & 30 pin

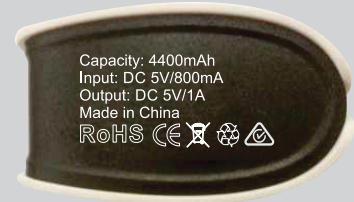
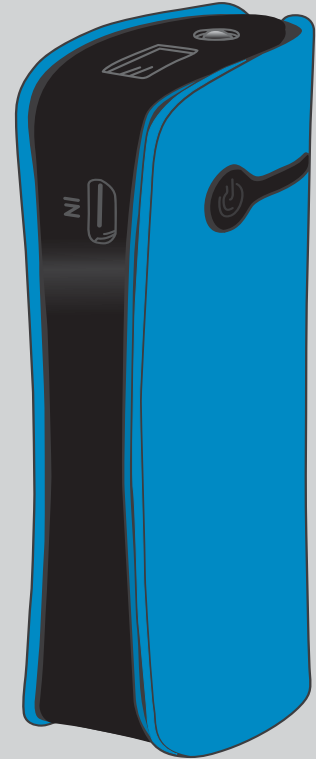


Direct digital designs are printed in CMYK.
Pantone colours will be produced in the closest CMYK colour match possible.

FRONT



BACK



Maximum print area: Front: 50mmL x 16mmH or Back: 70mmL x 16mmH
Actual print size:

PLEASE SEE NEXT PAGE...

INTERNAL USE ONLY

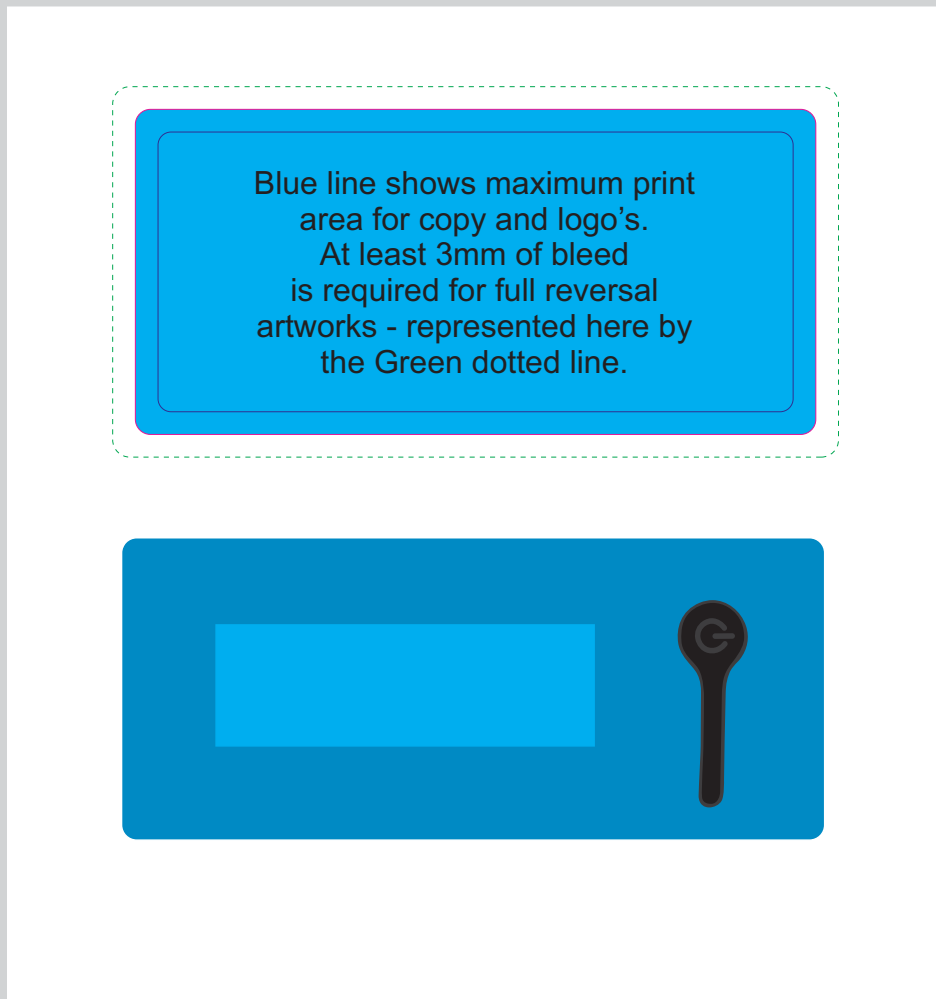
INT:

QC Code:	New Pte # _____	Info:	MSDS-DG	Ctns: _____	Wt(kg): _____
PP:	Prt Int: _____	Prep:	Q: _____	D: _____	
Rpt Ord:	Rpt Pte # _____	Cat:	S: _____	Ctns: _____	Wt(kg): _____
Split: Y/N	Mach: _____	U/P Int: _____	R/P Int: _____	E: _____	D: _____
Courier:			R: _____	Total Wt(kg): _____	

LABEL NOTE:

Labels are applied by hand and although the greatest care is taken label positioning cannot be guaranteed across the entire order. They are digitally printed in CMYK. If pantone colour matching is important we require you to provide specific PMS colours, and we will produce closest CMYK colour match possible (to CP equivalent of coated pantone colours - perfect colour match not guaranteed). Vector art is required for colour matching. We are unable to edit colours in rasterized images. Print colours may be altered in appearance if placed on a strong colour background. Design position cannot be guaranteed across the entire order, some movement does occur during printing

**White gift box with display window.
This page shows final packaging layout.**



Maximum Label size: 90mmL x 43mmH

Actual print size:

Printed on a white label.

Pink Border shows max label size and is not printed