



# ARTWORK FOR APPROVAL

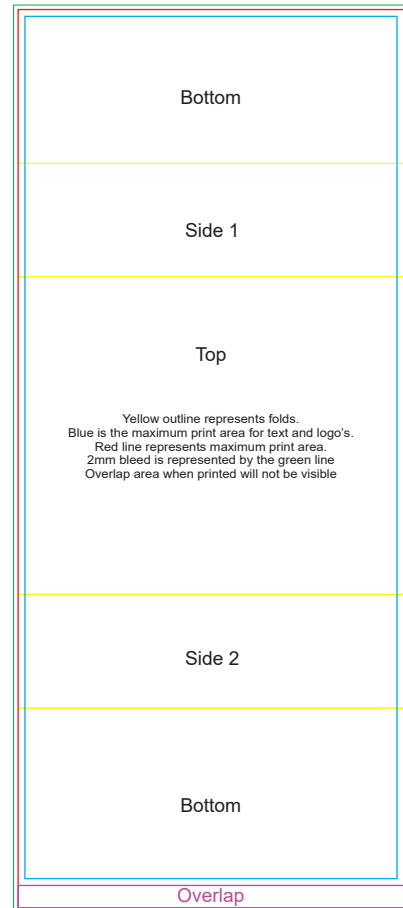
**IMPORTANT:** This drawing is for approximate print positional purposes only. It is not intended to be an exact scale or detailed representation of the product. Colour proofs are to be used as a guide only and not a true representation of true product or print colour. If item colours are important, order a sample from our current shipment.

**Order #**  
**Proof #1**  
**Date 00/00/00**

**Product Code** : LL8272 - LL9109, LL3275, LL9600, LL826  
**Description** : Sass Gift Set - Miami Pen, Velocity Power Bank & Swivel Flash Drive + Sleeve  
**Item Colour/s** : Black, Blue, Green, Orange, & Red  
**Quantity** :  
**Decoration Type** : Laser Pen & Flash Drive + Digitally Printed Sleeve  
**Print Colour**

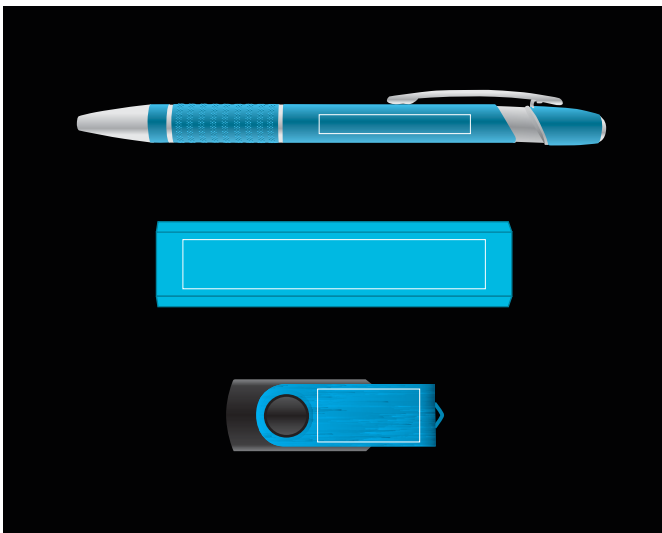


**Digitally printed Sleeve**  
Below is approx 30% of size



**BELOW IS 50% OF ACTUAL SIZE**

Example of the product inside the black gift box



Maximum print area: 170mmL x 396mmH  
Actual print size:

**PLEASE SEE NEXT PAGE...**

**INTERNAL USE ONLY**

**INT:**

QC Code: \_\_\_\_\_ New Pte # \_\_\_\_\_ Info: \_\_\_\_\_ Q: \_\_\_\_\_ Ctns: \_\_\_\_\_ Wt(kg): \_\_\_\_\_  
PP: \_\_\_\_\_ Prt Int: \_\_\_\_\_ Prep: \_\_\_\_\_ S: \_\_\_\_\_ D: \_\_\_\_\_  
Rpt Ord: \_\_\_\_\_ Rpt Pte # \_\_\_\_\_ Cat: \_\_\_\_\_ E: \_\_\_\_\_ Ctns: \_\_\_\_\_ Wt(kg): \_\_\_\_\_  
Spl: Y/N \_\_\_\_\_ Mach: \_\_\_\_\_ U/P Int: \_\_\_\_\_ R/P Int: \_\_\_\_\_ R: \_\_\_\_\_ D: \_\_\_\_\_  
Courier: \_\_\_\_\_ Total Wt(kg): \_\_\_\_\_

## LL9600 Swivel USB Flash Drive

### PLEASE NOTE

Colour of Aluminium shell can vary 10% +/- within the same shipment and is considered acceptable.  
If colouring is important please ask for a sample from our current shipment

### LASER ENGRAVING

This product laser engraves White/Light Grey



Maximum print area: 27mmL x 14mmH  
Actual print size:

## LL3275 Miami Aluminium Ballpoint Pen

### LASER ENGRAVING

This product laser engraves Silver



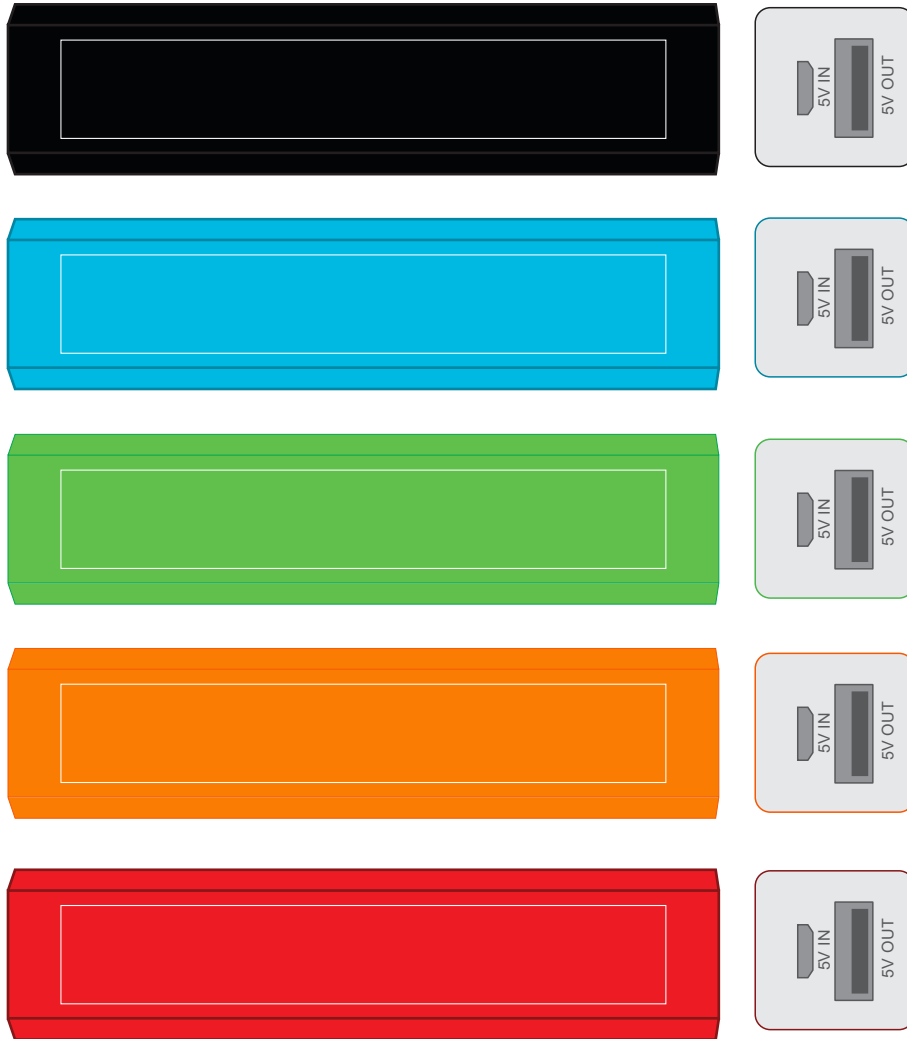
Maximum print area: 40mmL x 5mmH  
Actual print size:

**PLEASE SEE NEXT PAGE...**

# LL9109 Aluminium Velocity Mobile Phone Power Bank

## LASER ENGRAVING

This product laser engraves White/Light Grey



Maximum print area: 80mmL x 13mmH  
Actual print size:

# Digitally printed Sleeve

Direct digital designs are printed in CMYK.  
Pantone colours will be produced in the closest CMYK colour match possible.

Bottom

Side 1

Top

Yellow outline represents folds.  
Blue is the maximum print area for text and logo's.  
Red line represents maximum print area.  
2mm bleed is represented by the green line  
Overlap area when printed will not be visible

Side 2

Bottom

Overlap

Maximum print area: 170mmL x 396mmH  
Actual print size: