



ARTWORK FOR APPROVAL

IMPORTANT: This drawing is for approximate print positional purposes only. It is not intended to be an exact scale or detailed representation of the product. Colour proofs are to be used as a guide only and not a true representation of true product or print colour. If item colours are important, order a sample from our current shipment.

Order #
Proof #1
Date 00/00/00

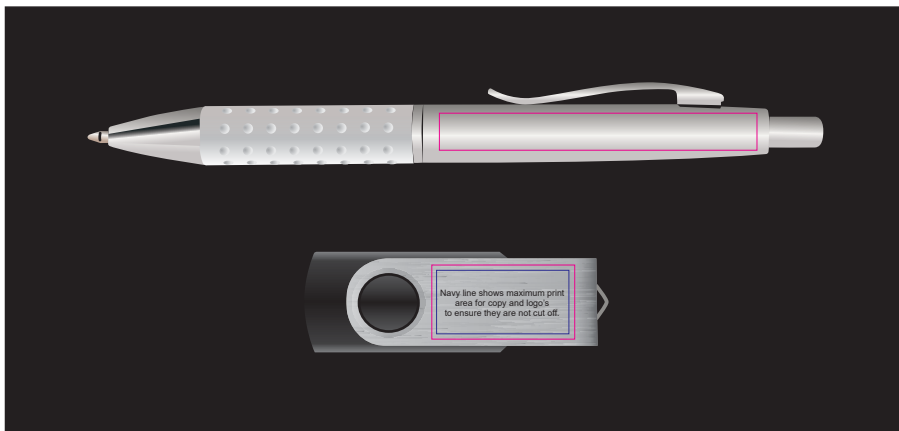
Product Code : LL8211 - LL3081, LL9600, LL821
Description : Style Gift Set - Bling Pen and Swivel Flash Drive + Sleeve
Item Colour/s : Silver
Quantity :
Decoration Type : Digital Direct (Pen & Flash Drive) + Digitally Printed Sleeve
Print Colour



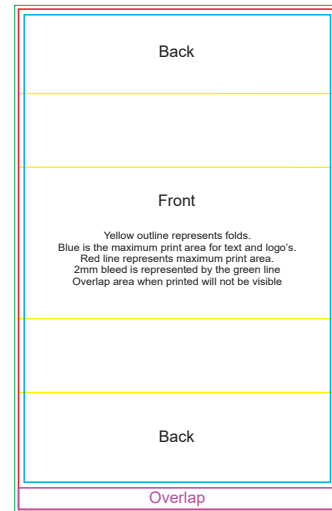
Direct digital designs are printed in CMYK.
Pantone colours will be produced in the closest CMYK colour match possible.

BELOW IS 70% OF ACTUAL SIZE

Example of the product inside the black gift box



Digitally printed Sleeve Approx 25% of size



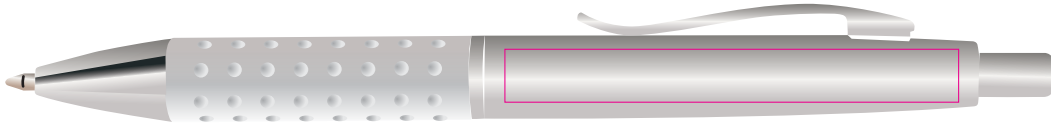
Maximum print area: 168mmL x 264.6mmH
Actual print size:

PLEASE SEE NEXT PAGE...

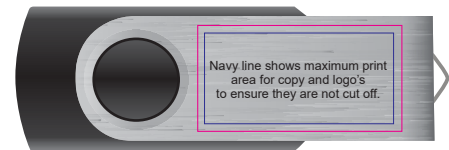
INTERNAL USE ONLY

INT:

QC Code:	New Pte # _____	Info:	Q: _____	Ctns: _____	Wt(kg): _____
PP:	Prt Int: _____	Prep:	S: _____	D: _____	
Rpt Ord:	Rpt Pte # _____	Cat:	E: _____	Ctns: _____	Wt(kg): _____
Split: Y/N	Mach: _____	U/P Int: _____	R/P Int: _____	R: _____	D: _____
Courier:					Total Wt(kg): _____

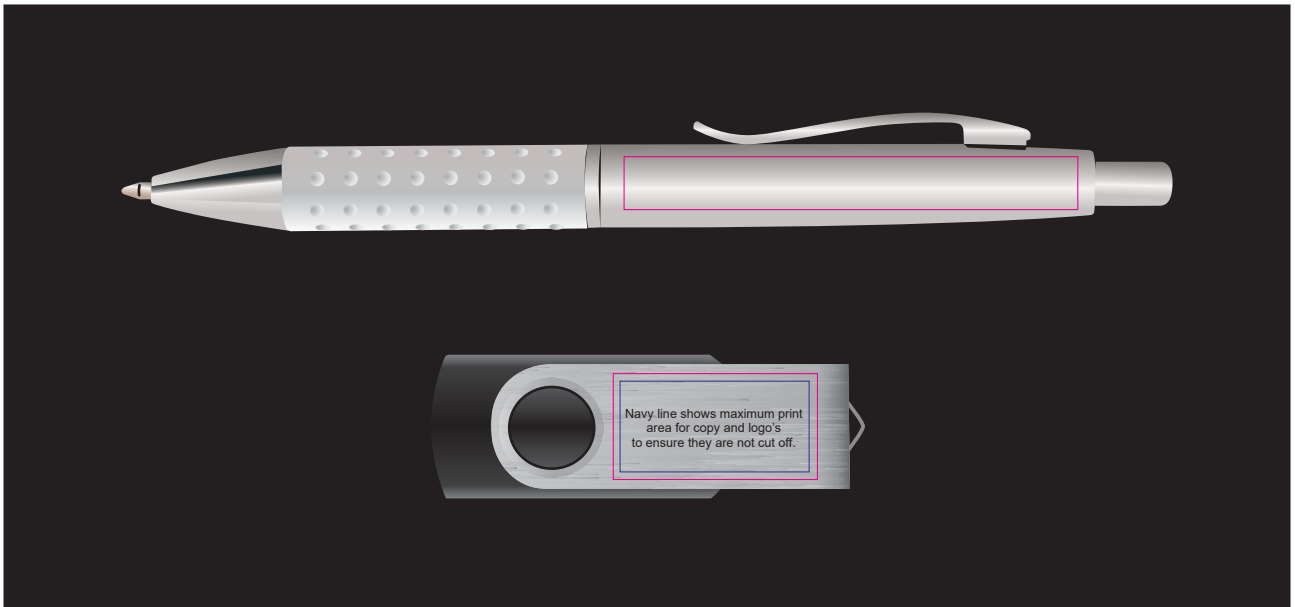


Maximum print area: 60mmL x 7mmH
Actual print size:



Maximum print area: 27mmL x 14mmH
Actual print size:

Example of the product inside the black gift box



Digitally printed Sleeve

Direct digital designs are printed in CMYK.
Pantone colours will be produced in the closest CMYK colour match possible.

Back

Front

Yellow outline represents folds.
Blue is the maximum print area for text and logo's.
Red line represents maximum print area.
2mm bleed is represented by the green line
Overlap area when printed will not be visible

Back

Overlap

Maximum print area: 168mmL x 264.6mmH
Actual print size: