

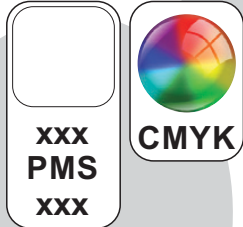


# ARTWORK FOR APPROVAL

**IMPORTANT:** This drawing is for approximate print positional purposes only. It is not intended to be an exact scale or detailed representation of the product. Colour proofs are to be used as a guide only and not a true representation of true product or print colour. If item colours are important, order a sample from our current shipment.

Order #  
Proof #1  
Date 00/00/00

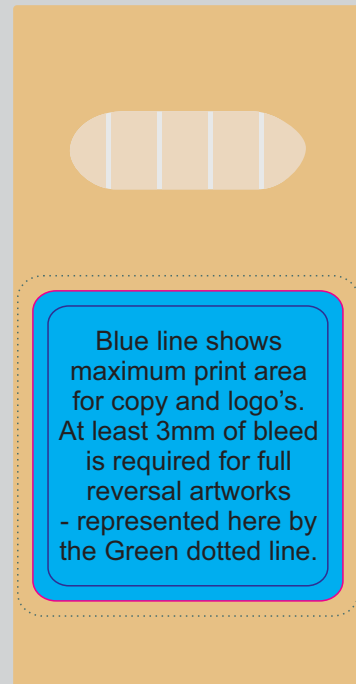
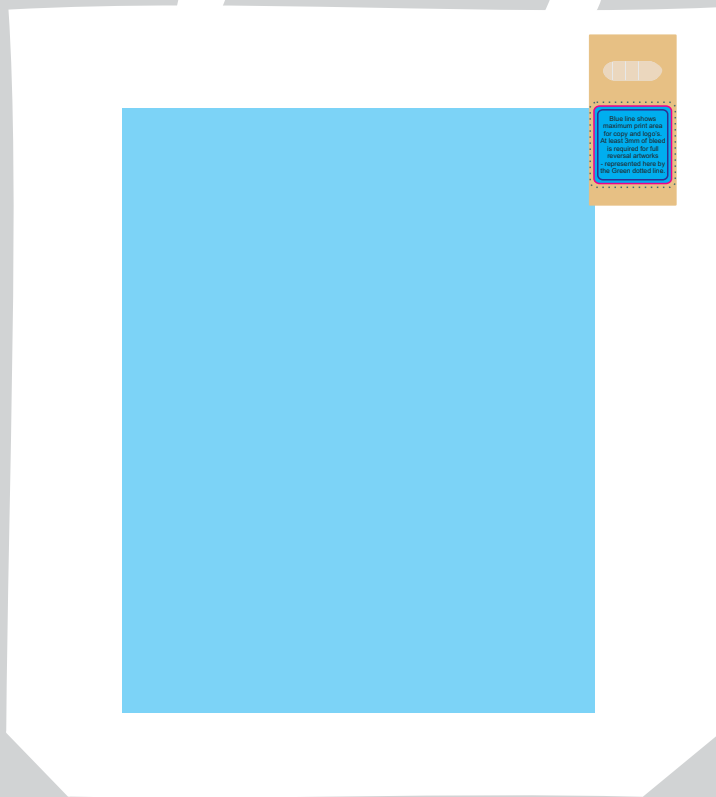
Product Code : LL5524  
Description : Colouring in Long Handle Cotton Tote Bag with Pencils  
Item Colour/s : White & Natural/Assorted  
Quantity :  
Decoration Type : Screen + Standard Label  
Print Colour



## White Cotton bag with Pencils adhered to the bag

Below is actual size

Below is 25% of actual size



Blue line shows maximum print area for copy and logo's. At least 3mm of bleed is required for full reversal artworks - represented here by the Green dotted line.

### INTERNAL USE ONLY

INT:

QC Code:	New Pte # _____	Info:	Q: _____	Ctns: _____	Wt(kg): _____
PP:	Prt Int: _____	Prep:	S: _____	D: _____	
Rpt Ord:	Rpt Pte # _____	Cat:	E: _____	Ctns: _____	Wt(kg): _____
Split: Y/N	Mach: _____	U/P Int: _____	R/P Int: _____	R: _____	D: _____
Courier:					Total Wt(kg): _____

### PRINTING ON COTTON BAGS

Cotton bags are not perfectly straight, therefore true squares/rectangular designs may appear distorted on the product and designs using full coverage print areas are to be avoided.

Bags can have some minor folds or threads and printing over the folds or threads doesn't detract from the design and is considered acceptable.

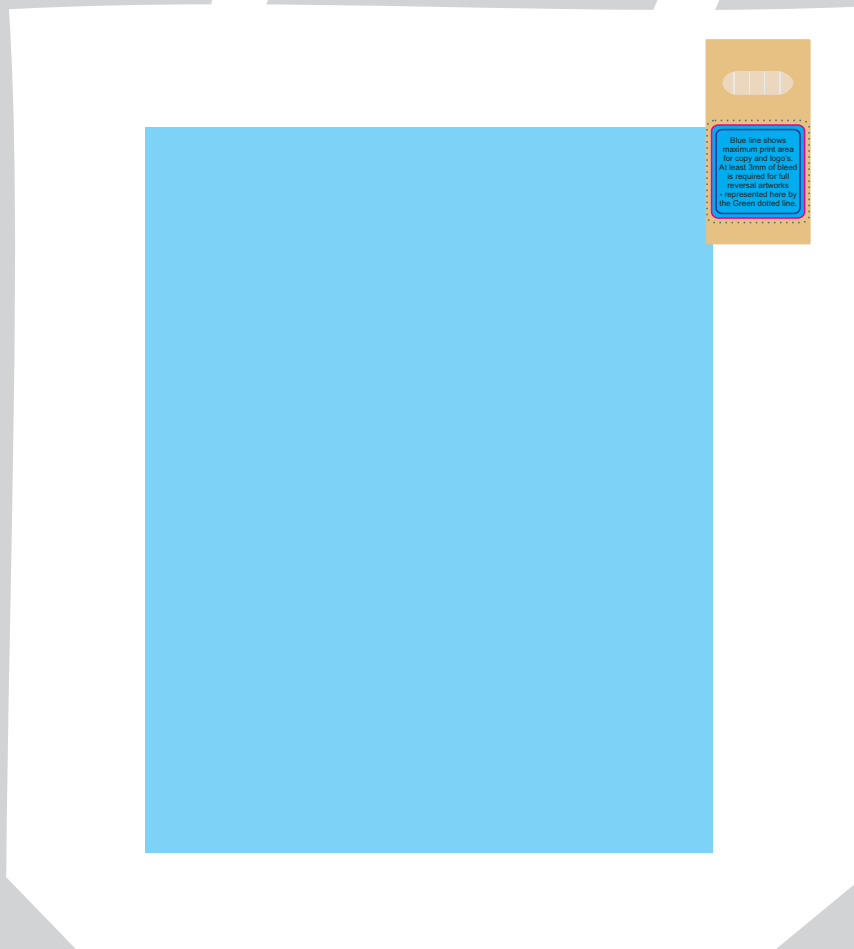
### PRINT COLOURS ON COLOURED COTTON BAGS

Metallic Silver or Black are recommended print colours on all coloured bags. Some pantone colours close to those of the bag colour and black may disappear. If in doubt request a pre-production sample as an extra cost.

### COTTON VARIANCE

Fabric variations are considered acceptable but if critical, please ask for a sample from our current shipment.

**Below at 30% of actual**



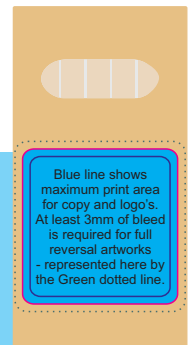
Maximum print area: 250mmL x 320mmH

Actual print size:

**PLEASE SEE NEXT PAGE...**

**Artwork is 50% of actual size**

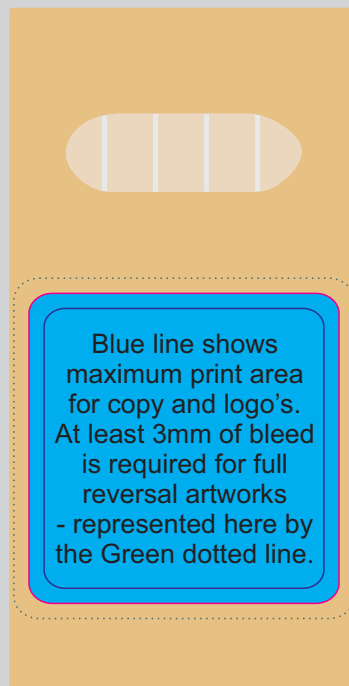
Maximum print area: 250mmL x 320mmH  
Actual print size:



Blue line shows maximum print area for copy and logo's.  
At least 3mm of bleed is required for full reversal artworks - represented here by the Green dotted line.

**LABEL NOTE:**

Labels are applied by hand and although the greatest care is taken label positioning cannot be guaranteed across the entire order. They are digitally printed in CMYK. If pantone colour matching is important we require you to provide specific PMS colours, and we will produce closest CMYK colour match possible (to CP equivalent of coated pantone colours - perfect colour match not guaranteed). Vector art is required for colour matching. We are unable to edit colours in rasterized images. Print colours may be altered in appearance if placed on a strong colour background. Design position cannot be guaranteed across the entire order, some movement does occur during printing



Maximum label size: 41mmL x 41mmH  
Actual print size:  
Printed on white label.  
Pink border shows max label size and is not printed

# Film - Showing at actual size