



ARTWORK FOR APPROVAL

IMPORTANT: This drawing is for approximate print positional purposes only. It is not intended to be an exact scale or detailed representation of the product. Colour proofs are to be used as a guide only and not a true representation of true product or print colour. If item colours are important, order a sample from our current shipment.

Order #
Proof #1
Date 00/00/00

Product Code : LL4872
Description : Corporate Colour Mini Jelly Beans in Dispenser
Item Colour/s : Clear
Jelly Bean Colour/s :
Quantity :
Decoration Type : Standard Label
Print Colour :



LABEL NOTE:

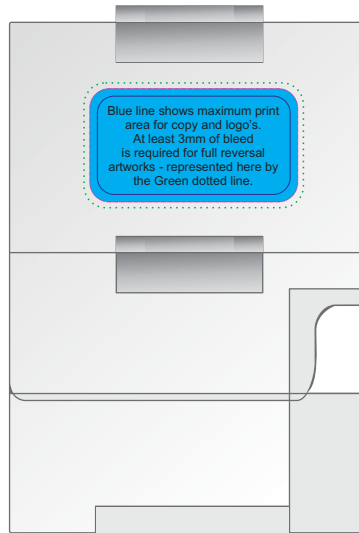
Labels are applied by hand and although the greatest care is taken label positioning cannot be guaranteed across the entire order. They are digitally printed in CMYK. If pantone colour matching is important we require you to provide specific PMS colours, and we will produce closest CMYK colour match possible (to CP equivalent of coated pantone colours - perfect colour match not guaranteed). Vector art is required for colour matching. We are unable to edit colours in rasterized images. Print colours may be altered in appearance if placed on a strong colour background. Design position cannot be guaranteed across the entire order, some movement does occur during printing

Jelly bean shades can vary between shipments.
Request sample of latest shipment if colours are important.

Please choose your corporate colours



BELOW IS 50% OF ACTUAL SIZE



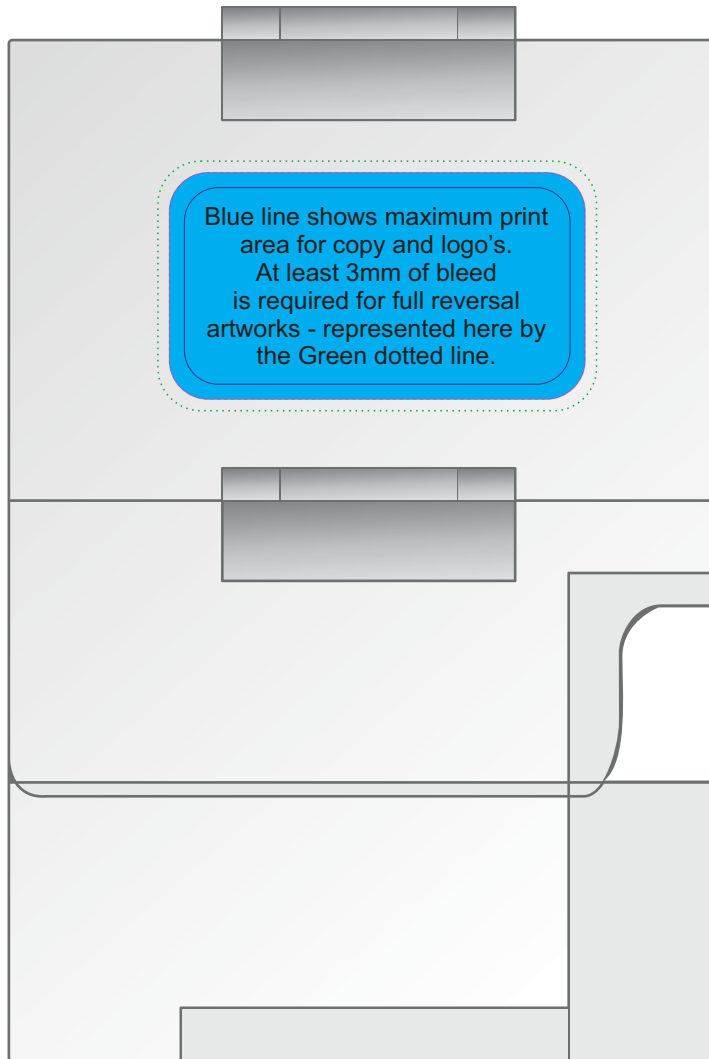
Maximum label size: 55mmL x 30mmH
Actual print size:
Printed on white label.
Pink border shows max label size and is not printed

PLEASE SEE NEXT PAGE...

INTERNAL USE ONLY

INT:

QC Code:	New Pte # _____	Info:	Q: _____	Ctns: _____	Wt(kg): _____
PP:	Prt Int: _____	Prep:	S: _____	D: _____	
Rpt Ord:	Rpt Pte # _____	Cat:	E: _____	Ctns: _____	Wt(kg): _____
Split: Y/N	Mach: _____	U/P Int: _____	R/P Int: _____	R: _____	D: _____
Courier:					Total Wt(kg): _____



Maximum label size: 55mmL x 30mmH

Actual print size:

Printed on white label.

Pink border shows max label size and is not printed

Mini Jelly Beans 630 grams
 Ingredients: Sugar, Glucose Syrup, Modified Starch,
 Citric Acid, Artificial Flavours & Artificial Colours (102,110,
 123, 129, 133 & 171) Carnauba Wax & Pectin.
 Best By: MADE IN CHINA
 This Product may contain traces of peanuts & other nuts.

NUTRITIONAL INFORMATION
 Servings per package: 63 Serving Size: 10g

	Average Qty per 10g	Average Qty per 100g
630g		
Energy	166kJ	1023kJ
Protein	Less than 1g	Less than 1g
Fat- Total	Less than 1g	Less than 1g
- Saturated	Less than 1g	Less than 1g
Carbohydrate	8g	78.0g
- Sugars	8g	65.0g
Sodium	Less than 1g	Less than 1g

Produced for:
 Ph:
 www

**STATUTORY INGREDIENT LABELS
 PLEASE CHECK YOUR DETAILS**

Ingredients label: 33mmL x 33mmH

White Label with Black

Print adhered to base