



ARTWORK FOR APPROVAL

IMPORTANT: This drawing is for approximate print positional purposes only. It is not intended to be an exact scale or detailed representation of the product. Colour proofs are to be used as a guide only and not a true representation of true product or print colour. If item colours are important, order a sample from our current shipment.

Order #
Proof #1
Date 00/00/00

Product Code : LL335
Description : Corporate Colour Mini Jelly Beans in Silver Rectangular Tin
Item Colour/s : Silver
Jelly Bean Colour/s :
Quantity :
Decoration Type : Standard Label
Print Colour



LABEL NOTE:

Labels are applied by hand and although the greatest care is taken label positioning cannot be guaranteed across the entire order. They are digitally printed in CMYK. If pantone colour matching is important we require you to provide specific PMS colours, and we will produce closest CMYK colour match possible (to CP equivalent of coated pantone colours - perfect colour match not guaranteed). Vector art is required for colour matching. We are unable to edit colours in rasterized images. Print colours may be altered in appearance if placed on a strong colour background. Design position cannot be guaranteed across the entire order, some movement does occur during printing

Jelly bean shades can vary between shipments.
Request sample of latest shipment if colours are important.

Please choose your corporate colours

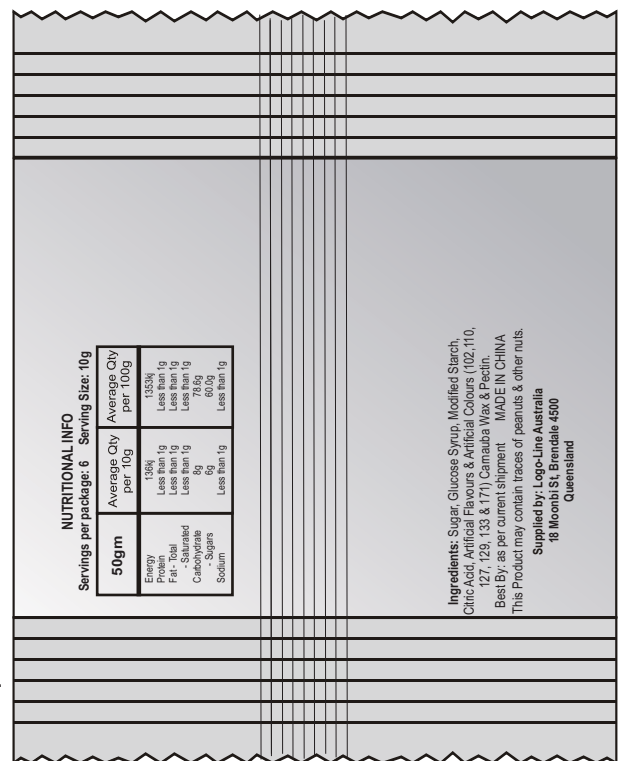


White Red Green Black Pink Purple Orange Yellow Blue

Blue line shows maximum print area for copy and logo's.
At least 3mm of bleed is required for full reversal artworks - represented here by the Green dotted line.

Maximum label size: 71mmL x 41mmH
Actual print size:
Printed on white label.
Pink border shows max label size and is not printed

Confectionery is packed on various types of equipment, this can affect bags sizes. However weight is always 60 grams.
If in doubt please request a sample.
Statutory ingredients information and best by date are pre-printed directly on the cello bags



NUTRITIONAL INFO		Average Qty per 100g	
Servings per package: 6	Serving Size: 10g	per 10g	per 100g
50gm	100%	Less than 1g	Less than 1g
Energy	100%	Less than 1g	Less than 1g
Protein	100%	Less than 1g	Less than 1g
Fat, Total	100%	Less than 1g	Less than 1g
- Saturated	100%	Less than 1g	Less than 1g
Carbohydrate	100%	Less than 1g	Less than 1g
Sodium	100%	Less than 1g	Less than 1g

Ingredients: Sugar, Glucose Syrup, Modified Starch, Citric Acid, Artificial Flavours & Artificial Colours (102,110, 127, 129, 133 & 171) Carnauba Wax & Pectin.
Best By: as per current shipment
MADE IN CHINA
This Product may contain traces of peanuts & other nuts.
Supplied by: Logo-Line Australia
18 Moonbi St, Brendale 4500
Queensland

INTERNAL USE ONLY

INT:

QC Code:	New Pte #	Info:	Q:	Ctns:	Wt(kg):
PP:	Prt Int:	Prep:	S:	D:	
Rpt Ord:	Rpt Pte #	Cat:	E:	Ctns:	Wt(kg):
Split: Y/N	Mach:	U/P Int:	R/P Int:	R:	D:
Courier:					Total Wt(kg):