



ARTWORK FOR APPROVAL

IMPORTANT: This drawing is for approximate print positional purposes only. It is not intended to be an exact scale or detailed representation of the product. Colour proofs are to be used as a guide only and not a true representation of true product or print colour. If item colours are important, order a sample from our current shipment.

Order #
Proof #1
Date 00/00/00

Product Code : LL33015
Description : M&M's in Pillow Pack
Item Colour/s : Clear/Assorted
Quantity :
Decoration Type : Deluxe Label
Print Colour :

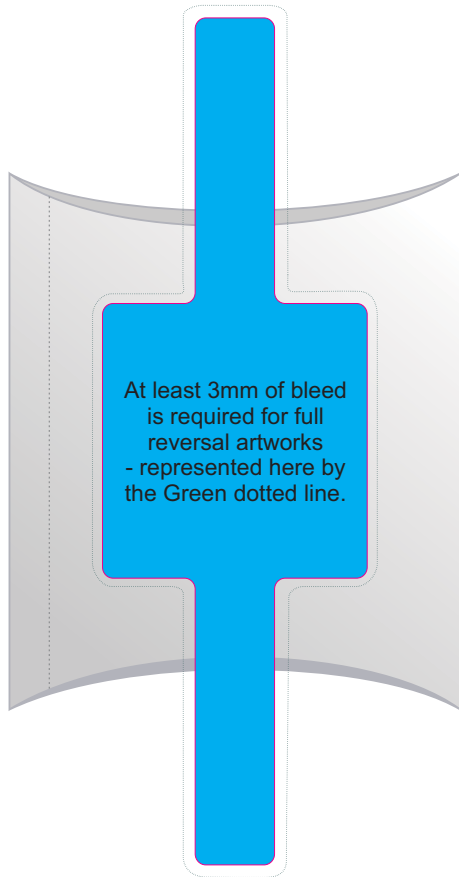


Please note: Labels are digitally printed in CMYK.

If pantone colour matching is important we require you to provide specific PMS colours, and we will produce closest CMYK colour match possible (to CP equivalent of coated pantone colours - perfect colour match not guaranteed). Vector art is required for colour matching. We are unable to edit colours in rasterized images. Print colours may be altered in appearance if placed on a strong colour background. Design position cannot be guaranteed across the entire order, some movement does occur during printing

Important: Labels are applied by hand and although the greatest care is taken label positioning cannot be guaranteed across the entire order.

BELOW IS 70% OF ACTUAL SIZE



At least 3mm of bleed is required for full reversal artworks - represented here by the Green dotted line.

IMPORTANT

Some chipping/break up of M&M's is unavoidable and considered acceptable.

Fill - M&M's



Maximum label size: Band 15mmL x 154mmH & Top cut to any shape up to 50mmL x 50mmH

Actual print size:

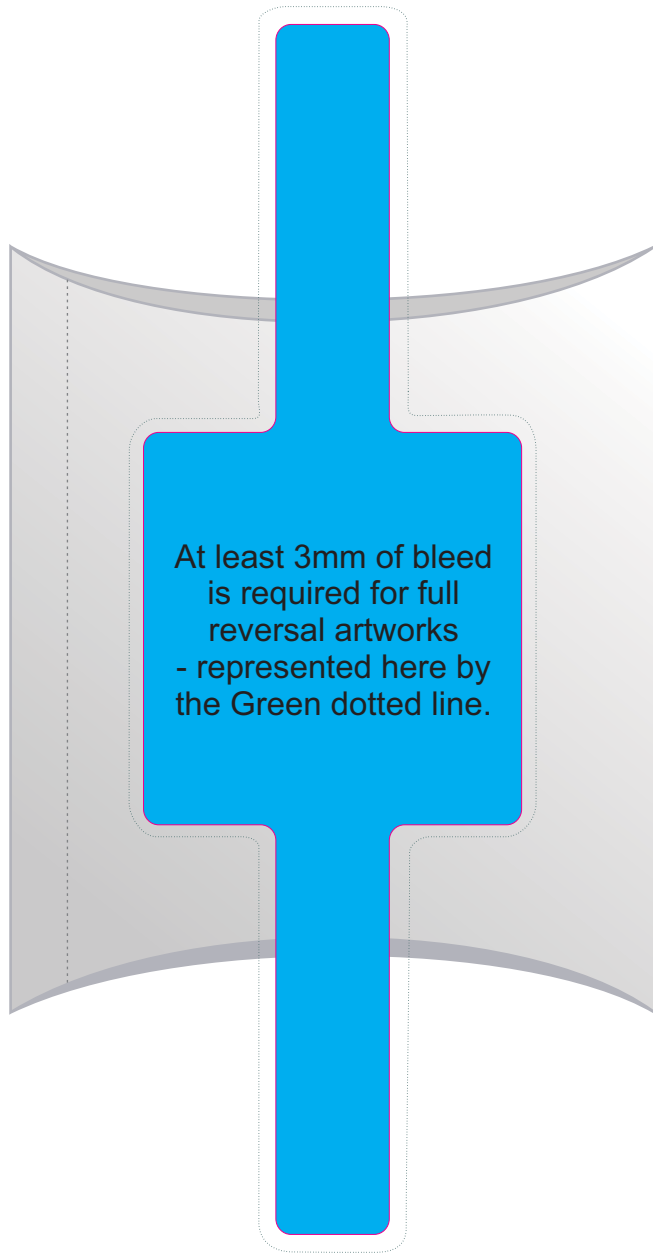
Printed on white label.

Pink border shows max label size and is not printed

INTERNAL USE ONLY

INT:

QC Code:	New Pte # _____	Info:	Q: _____	Ctns: _____	Wt(kg): _____
PP:	Prt Int: _____	Prep:	S: _____	D: _____	
Rpt Ord:	Rpt Pte # _____	Cat:	E: _____	Ctns: _____	Wt(kg): _____
Split: Y/N	Mach: _____	U/P Int: _____	R/P Int: _____	R: _____	D: _____
Courier:					Total Wt(kg): _____



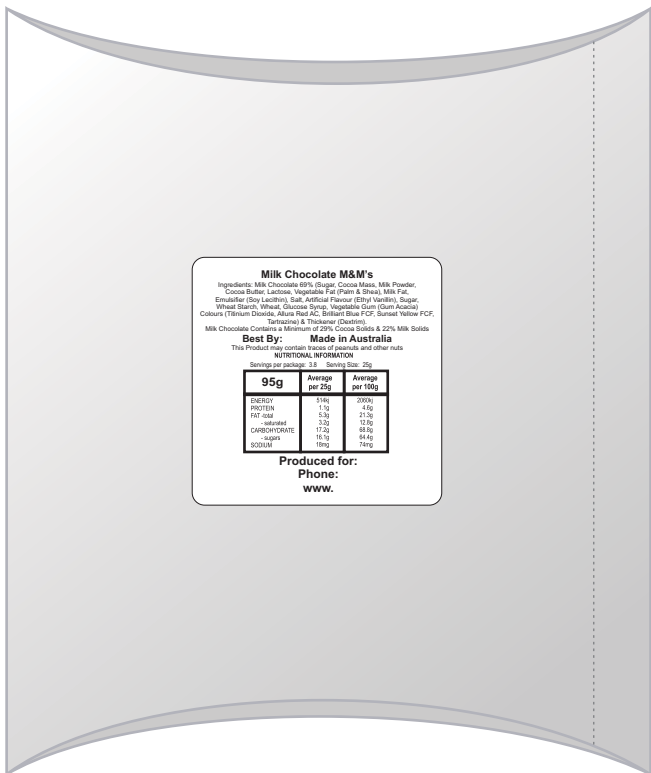
At least 3mm of bleed
is required for full
reversal artworks
- represented here by
the Green dotted line.

Maximum label size: Band 15mmL x 154mmH & Top cut to any shape up to 50mmL x 50mmH

Actual print size:

Printed on white label.

Pink border shows max label size and is not printed



Milk Chocolate M&M's

Ingredients: Milk Chocolate (Milk Sugar, Cocoa Mass, Milk Powder, Cocoa Butter, Lactose, Vegetable Fat (Palm & Shea), Milk Fat, Emulsifier (Poly Lactide), Salt, Artificial Flavour (Ethyl Vanillin), Sugar, Wheat Starch, Wheat, Glucose Syrup, Vegetable Gum (Gum Acacia), Colour (Titanium Dioxide, Iron Red AC, Brilliant Blue FCF, Sunset Yellow FCF, Tartrazine) & Thickener (Dextrin)

Milk Chocolate Contains a Minimum of 29% Cocoa Solids & 22% Milk Solids

Best By: Made in Australia

This Product may contain traces of peanuts and other nuts.

NUTRITIONAL INFORMATION

Serving per package: 35g - 100g per 100g

	95g	Average per 25g	Average per 100g
ENERGY	516	194	2050
PROTEIN	1.3	0.5	4.6
FAT total	2.3	0.9	9.1
FAT saturated	3.2	1.3	12.9
CARBOHYDRATE	12.2	4.7	47.9
-sugar	16.9	6.8	64.6
SODIUM	0.02	0.01	0.04

Produced for:

Phone:

www.

**STATUTORY INGREDIENTS LABEL
PLEASE CHECK YOUR DETAILS BELOW**

Label Size: 33mmL x 33mmH White label with black print
(including your distributor details)
adhered to the back of the pillow packs.