



ARTWORK FOR APPROVAL

IMPORTANT: This drawing is for approximate print positional purposes only. It is not intended to be an exact scale or detailed representation of the product. Colour proofs are to be used as a guide only and not a true representation of true product or print colour. If item colours are important, order a sample from our current shipment.

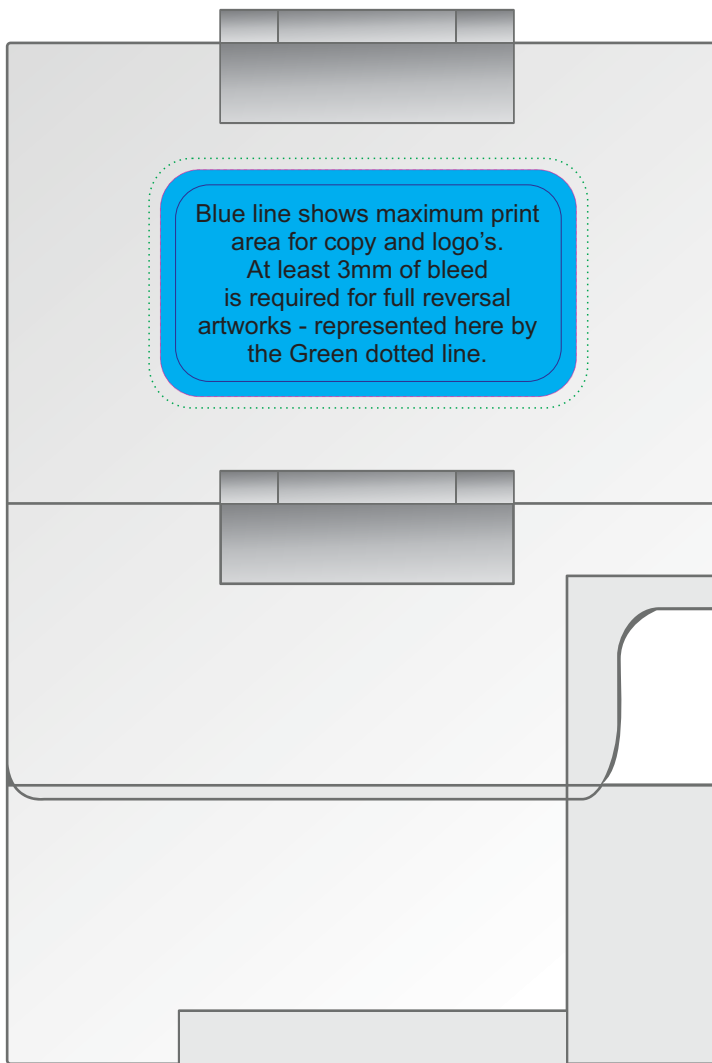
Order #
Proof #1
Date 00/00/00

Product Code : LL33001
Description : M&M's in Dispenser
Item Colour/s : Clear/Assorted
Quantity :
Decoration Type : Standard Label
Print Colour



LABEL NOTE:

Labels are applied by hand and although the greatest care is taken label positioning cannot be guaranteed across the entire order. They are digitally printed in CMYK. If pantone colour matching is important we require you to provide specific PMS colours, and we will produce closest CMYK colour match possible (to CP equivalent of coated pantone colours - perfect colour match not guaranteed). Vector art is required for colour matching. We are unable to edit colours in rasterized images. Print colours may be altered in appearance if placed on a strong colour background. Design position cannot be guaranteed across the entire order, some movement does occur during printing



Maximum label size: 55mmL x 30mmH
 Print size:
 Printed on White Surface

IMPORTANT
 Some chipping/break up of M&M's is unavoidable and considered acceptable.

Fill - M&M's



STATUTORY INGREDIENT LABELS PLEASE CHECK YOUR DETAILS

Ingredients label: 33mmL x 33mmH
 White Label with Black
 Print adhered to base

Milk Chocolate M&M's
 Ingredients: Milk Chocolate (60% (Sugar, Cocoa Mass, Milk Powder, Cocoa Butter, Lecithin, Vegetable Fat (Palm & Shea)), Milk Fat, Emulsifier (Soy Lecithin), Salt, Artificial Flavour (Ethyl Vanillin), Sugar, Wheat Starch, Wheat, Chocolate Syrup, Vegetable Gum (Guar Gum), Cocoa (Theobromine), Allura Red AC, Brilliant Blue FCF, Sunset Yellow FCF, Tartrazine) & Thickener (Dextrin), Milk Chocolate Contains a Minimum of 20% Cocoa Solids & 22% Milk Solids.

Best By: Made in Australia
 This product may contain traces of peanuts and other nuts.

NUTRITIONAL INFORMATION		
Serving per container: 25 Serving Size: 25g		
550g	Average per 25g	Average per 100g
	ENERG	2000KJ
	PROTEIN	4.5g
	FAT	23.5g
	SUGARS	52.5g
	CARBOHYDRATE	60.5g
	SODIUM	0.4g

Produced for:
 Phone:
 www.

INTERNAL USE ONLY

INT:

QC Code:	New Pte # _____	Info:	Q: _____	Ctns: _____	Wt(kg): _____
PP:	Prt Int: _____	Prep:	S: _____	D: _____	
Rpt Ord:	Rpt Pte # _____	Cat:	E: _____	Ctns: _____	Wt(kg): _____
Split: Y/N	Mach: _____	U/P Int: _____	R/P Int: _____	R: _____	D: _____
Courier:					Total Wt(kg): _____