



ARTWORK FOR APPROVAL

IMPORTANT: This drawing is for approximate print positional purposes only. It is not intended to be an exact scale or detailed representation of the product. Colour proofs are to be used as a guide only and not a true representation of true product or print colour. If item colours are important, order a sample from our current shipment.

Order #
Proof #1
Date 00/00/00

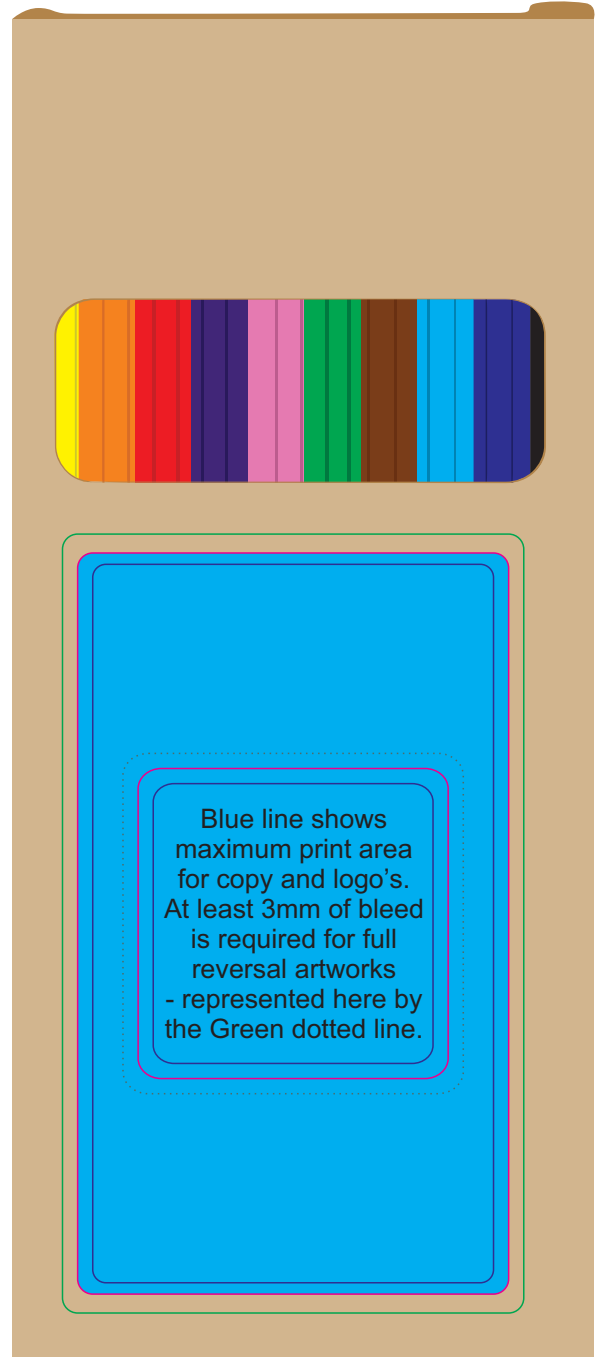
Product Code : LL1907
Description : Coloured Full Length Colouring Pencils PK 10
Item Colour : Natural
Quantity :
Decoration Type : 4CP Standard Label
Print Colour



LABEL NOTE:

Labels are applied by hand and although the greatest care is taken label positioning cannot be guaranteed across the entire order. They are digitally printed in CMYK. If pantone colour matching is important we require you to provide specific PMS colours, and we will produce closest CMYK colour match possible (to CP equivalent of coated pantone colours - perfect colour match not guaranteed). Vector art is required for colour matching. We are unable to edit colours in rasterized images. Print colours may be altered in appearance if placed on a strong colour background. Design position cannot be guaranteed across the entire order, some movement does occur during printing

Maximum label size:
57mmL x 98mmH or 41mmL x 41mmH
Maximum print size:
Printed on white label.
Pink border shows max label size and is not printed



INTERNAL USE ONLY

INT:

| | | | | | |
|------------|-----------------|----------------|----------------|-------------|---------------------|
| QC Code: | New Pte # _____ | Info: | Q: _____ | Ctns: _____ | Wt(kg): _____ |
| PP: | Prt Int: _____ | Prep: | S: _____ | D: _____ | |
| Rpt Ord: | Rpt Pte # _____ | Cat: | E: _____ | Ctns: _____ | Wt(kg): _____ |
| Split: Y/N | Mach: _____ | U/P Int: _____ | R/P Int: _____ | R: _____ | D: _____ |
| Courier: | | | | | Total Wt(kg): _____ |