

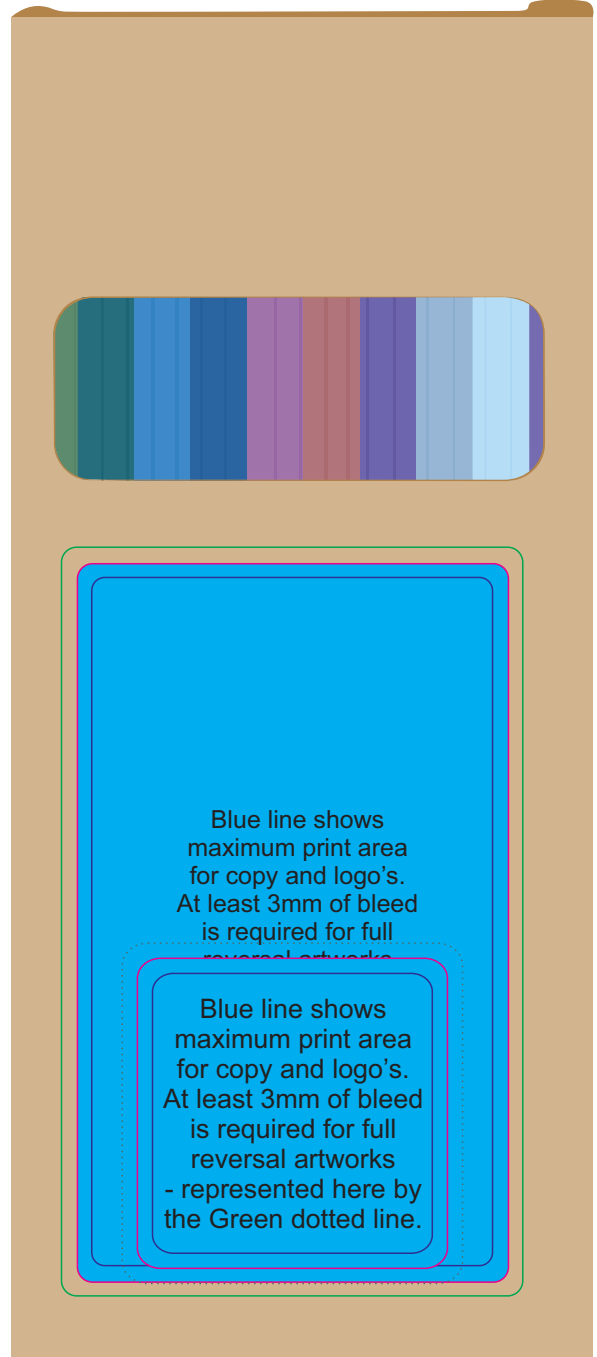


# ARTWORK FOR APPROVAL

IMPORTANT: This drawing is for approximate print positional purposes only. It is not intended to be an exact scale or detailed representation of the product. Colour proofs are to be used as a guide only and not a true representation of true product or print colour. If item colours are important, order a sample from our current shipment.

Order #  
Proof #1  
Date 00/00/00

Product Code : LL1906  
Description : Metallic Full Length Pencils, Pk 10  
Item Colour/s : Natural  
Quantity :  
Decoration Type : 4CP Standard Label  
Print Colour



Maximum label size:  
57mmL x 95mmH or  
41mmL x 41mmH  
Printed on white label.  
Pink border shows max  
label size and is not printed

### LABEL NOTE:

Labels are applied by hand and although the greatest care is taken label positioning cannot be guaranteed across the entire order. They are digitally printed in CMYK. If pantone colour matching is important we require you to provide specific PMS colours, and we will produce closest CMYK colour match possible (to CP equivalent of coated pantone colours - perfect colour match not guaranteed). Vector art is required for colour matching. We are unable to edit colours in rasterized images. Print colours may be altered in appearance if placed on a strong colour background. Design position cannot be guaranteed across the entire order, some movement does occur during printing

Blue line shows maximum print area for copy and logo's. At least 3mm of bleed is required for full reversal artworks

Blue line shows maximum print area for copy and logo's. At least 3mm of bleed is required for full reversal artworks - represented here by the Green dotted line.

### INTERNAL USE ONLY

INT:

QC Code:	New Pte # _____	Info:	Q: _____	Ctns: _____	Wt(kg): _____
PP:	Prt Int: _____	Prep:	S: _____	D: _____	
Rpt Ord:	Rpt Pte # _____	Cat:	E: _____	Ctns: _____	Wt(kg): _____
Split: Y/N	Mach: _____	U/P Int: _____	R/P Int: _____	R: _____	D: _____
Courier:					Total Wt(kg): _____