



# ARTWORK FOR APPROVAL

**IMPORTANT:** This drawing is for approximate print positional purposes only. It is not intended to be an exact scale or detailed representation of the product. Colour proofs are to be used as a guide only and not a true representation of true product or print colour. If item colours are important, order a sample from our current shipment.

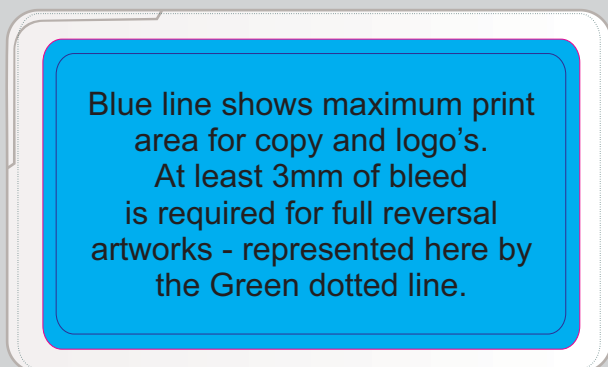
**Order #**  
**Proof #1**  
**Date 00/00/00**

**Product Code** : LL077  
**Description** : Rectangular Sugar Free Breath Mints  
**Item Colour/s** : White  
**Quantity** :  
**Decoration Type** : Standard Label  
**Print Colour**

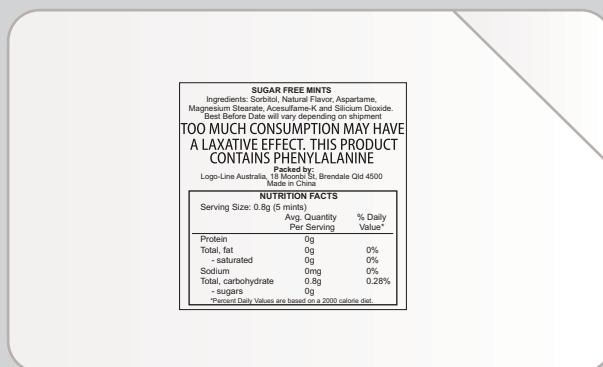


### LABEL NOTE:

Labels are applied by hand and although the greatest care is taken label positioning cannot be guaranteed across the entire order. They are digitally printed in CMYK. If pantone colour matching is important we require you to provide specific PMS colours, and we will produce closest CMYK colour match possible (to CP equivalent of coated pantone colours - perfect colour match not guaranteed). Vector art is required for colour matching. We are unable to edit colours in rasterized images. Print colours may be altered in appearance if placed on a strong colour background. Design position cannot be guaranteed across the entire order, some movement does occur during printing



Blue line shows maximum print area for copy and logo's. At least 3mm of bleed is required for full reversal artworks - represented here by the Green dotted line.



**SUGAR FREE MINTS**  
 Ingredients: Sorbitol, Natural Flavour, Aspartame, Magnesium Stearate, Acesulfame-K and Silicon Dioxide.  
 Best Before Date will vary depending on shipment

**TOO MUCH CONSUMPTION MAY HAVE A LAXATIVE EFFECT. THIS PRODUCT CONTAINS PHENYLALANINE**

Packed by:  
 Logo-Line Australia, 18 Moorosi St, Brendale Qld 4500  
 Made in China

NUTRITION FACTS		
Serving Size: 0.8g (5 mints)		
	Avg. Quantity Per Serving	% Daily Value*
Protein	0g	
Total fat	0g	0%
-saturated	0g	0%
Sodium	0mg	0%
Total carbohydrate	0.8g	0.28%
-sugars	0g	

\*Percent Daily Values are based on a 2000 calorie diet.

Maximum label size: 71mmL x 41mmH  
Actual print size:  
Printed onto a white label.  
Pink border shows label size and will not be printed.

**Ingredient Label:**  
30mmL x 30mmH White label with Black Thermal Print adhered to back

### INTERNAL USE ONLY

INT:

QC Code:	New Pte # _____	Info:	Q: _____	Ctns: _____	Wt(kg): _____
PP:	Prt Int: _____	Prep:	S: _____	D: _____	
Rpt Ord:	Rpt Pte # _____	Cat:	E: _____	Ctns: _____	Wt(kg): _____
Split: Y/N	Mach: _____	U/P Int: _____	R/P Int: _____	R: _____	D: _____
Courier:					Total Wt(kg): _____