



ARTWORK FOR APPROVAL

IMPORTANT: This drawing is for approximate print positional purposes only. It is not intended to be an exact scale or detailed representation of the product. Colour proofs are to be used as a guide only and not a true representation of true product or print colour. If item colours are important, order a sample from our current shipment.

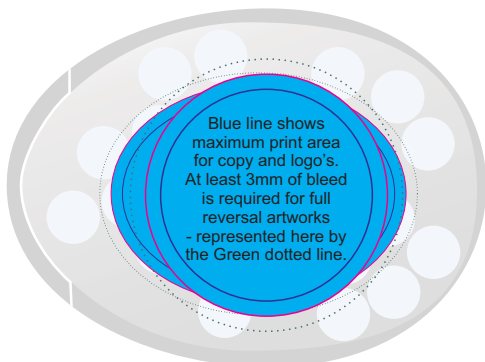
Order #
Proof #1
Date 00/00/00

Product Code : LL062
Description : Egg Shape Sugar Free Breath Mints
Item Colour/s : Frosted Clear
Quantity :
Decoration Type : Standard Label
Print Colour

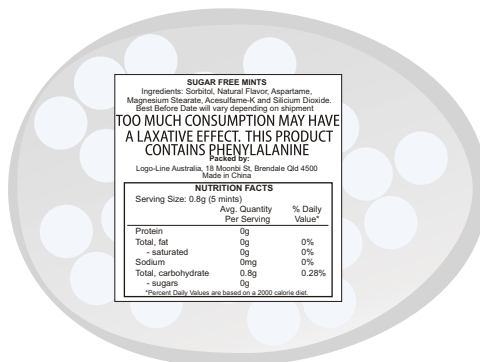


LABEL NOTE:

Labels are applied by hand and although the greatest care is taken label positioning cannot be guaranteed across the entire order. They are digitally printed in CMYK. If pantone colour matching is important we require you to provide specific PMS colours, and we will produce closest CMYK colour match possible (to CP equivalent of coated pantone colours - perfect colour match not guaranteed). Vector art is required for colour matching. We are unable to edit colours in rasterized images. Print colours may be altered in appearance if placed on a strong colour background. Design position cannot be guaranteed across the entire order, some movement does occur during printing



Maximum Label Size: 39mmL x 29mmH or 32mm Diameter
Actual print size:
Printed onto a white surface.
The pink border shows max label size and is not printed



STATUTORY INGREDIENTS LABEL ADHERED TO BACK
Ingredient Label - 30mmL x 30mmH
White Label with Black Thermal Print adhered to back

INTERNAL USE ONLY

INT:

QC Code: New Pte # _____ Info: Q: _____ Ctns: _____ Wt(kg): _____
PP: Prt Int: _____ Prep: S: _____ D: _____
Rpt Ord: Rpt Pte # _____ Cat: E: _____ Ctns: _____ Wt(kg): _____
Split: Y/N Mach: _____ U/P Int: _____ R/P Int: _____ R: _____ D: _____
Courier: Total Wt(kg): _____