

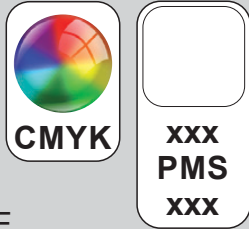


ARTWORK FOR APPROVAL

IMPORTANT: This drawing is for approximate print positional purposes only. It is not intended to be an exact scale or detailed representation of the product. Colour proofs are to be used as a guide only and not a true representation of true product or print colour. If item colours are important, order a sample from our current shipment.

Order #
Proof #1
Date 00/00/00

Product Code : LL0519 + LL6668
Description : Nova Power Bank + Medium Eva Case 50mmH
Item Colour/s : White + Black
Quantity :
Decoration Type : Digital Direct (Powerbank) + Screen Print (Eva Case)
Print Colour



PLEASE NOTE:
THIS ITEM HAS A
TEXTURED SURFACE

Direct digital designs are printed in CMYK.
Pantone colours will be produced in the closest CMYK colour match possible.

PLEASE NOTE: EVA cases are hand stitched therefore variations in size and shape of the item will occur. Print position cannot be guaranteed across the entire order and is considered acceptable.

Slight over spray of ink may appear on sides of item if a full reversal is printed

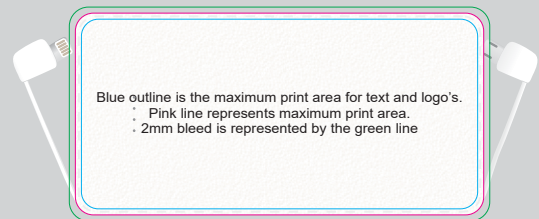
Showing at approx 60% of size

Standard



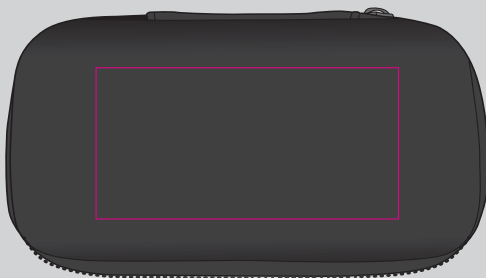
Maximum print area: 70mmL x 50mmH
Actual print size:

Edge to Edge

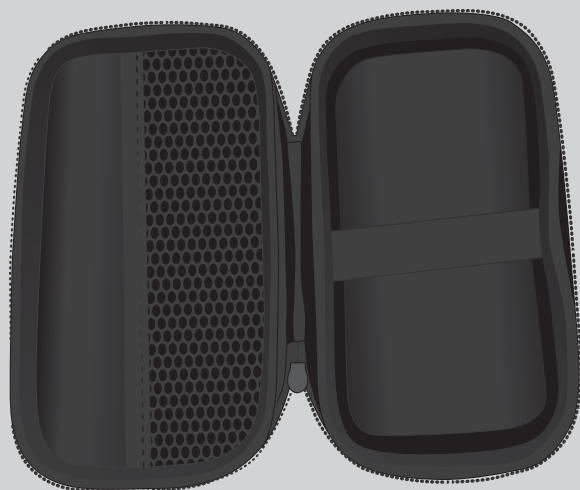


Maximum print area: 135mmL x 67mmH
Actual print size:

Showing at approx 40%



Maximum print area: 100mmL x 50mmH
Actual print size:



PLEASE SEE NEXT PAGE...

INTERNAL USE ONLY

INT:

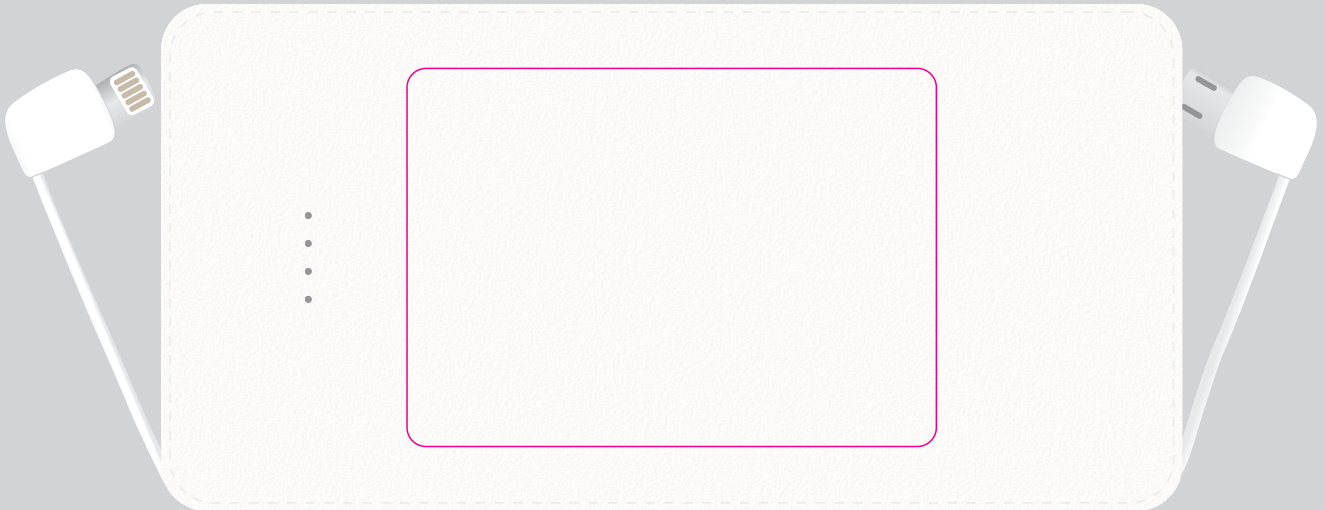
QC Code:	New Pte # _____	Info:	MSDS-DG	Ctns: _____	Wt(kg): _____
PP:	Prt Int: _____	Prep:	Q: _____	D: _____	
Rpt Ord:	Rpt Pte # _____	Cat:	S: _____	Ctns: _____	Wt(kg): _____
Split: Y/N	Mach: _____	U/P Int: _____	R/P Int: _____	E: _____	D: _____
Courier:			R: _____	Total Wt(kg): _____	

**PLEASE NOTE:
THIS ITEM HAS A TEXTURED SURFACE**

Direct digital designs are printed in CMYK.
Pantone colours will be produced in the closest CMYK colour match possible.

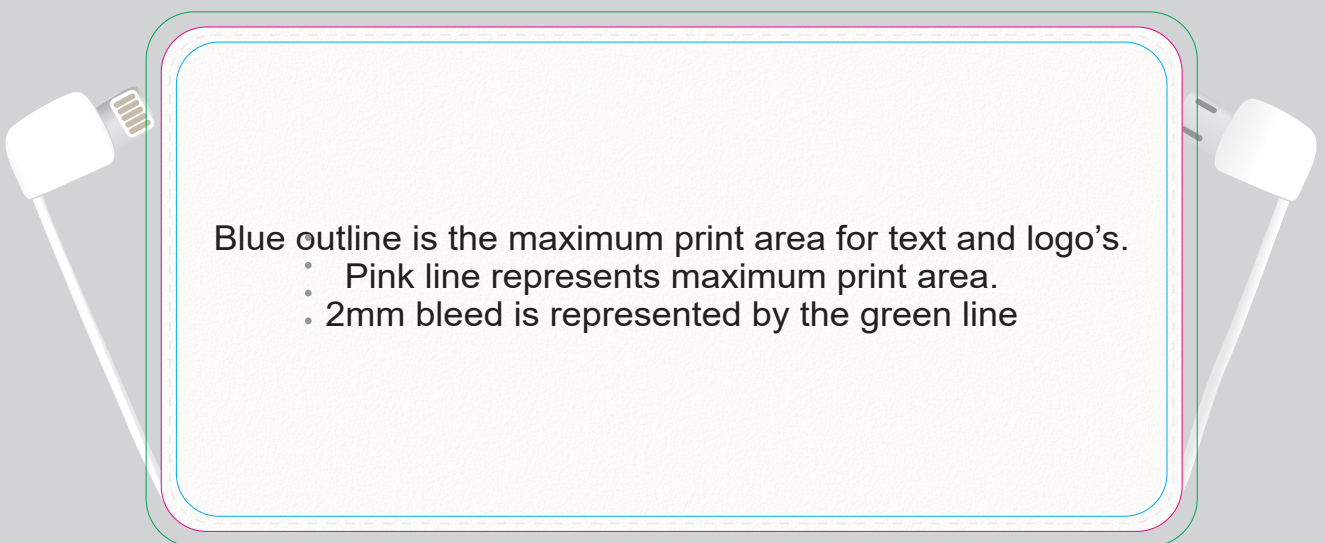
Slight over spray of ink may appear on sides of item if a full reversal is printed

Standard



Maximum print area: 70mmL x 50mmH
Actual print size:

Edge to Edge



Maximum print area: 135mmL x 67mmH
Actual print size:



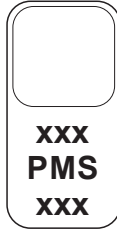
ARTWORK FOR APPROVAL

IMPORTANT: This drawing is for approximate print positional purposes only. It is not intended to be an exact scale or detailed representation of the product. Colour proofs are to be used as a guide only and not a true representation of true product or print colour. If item colours are important, order a sample from our current shipment.

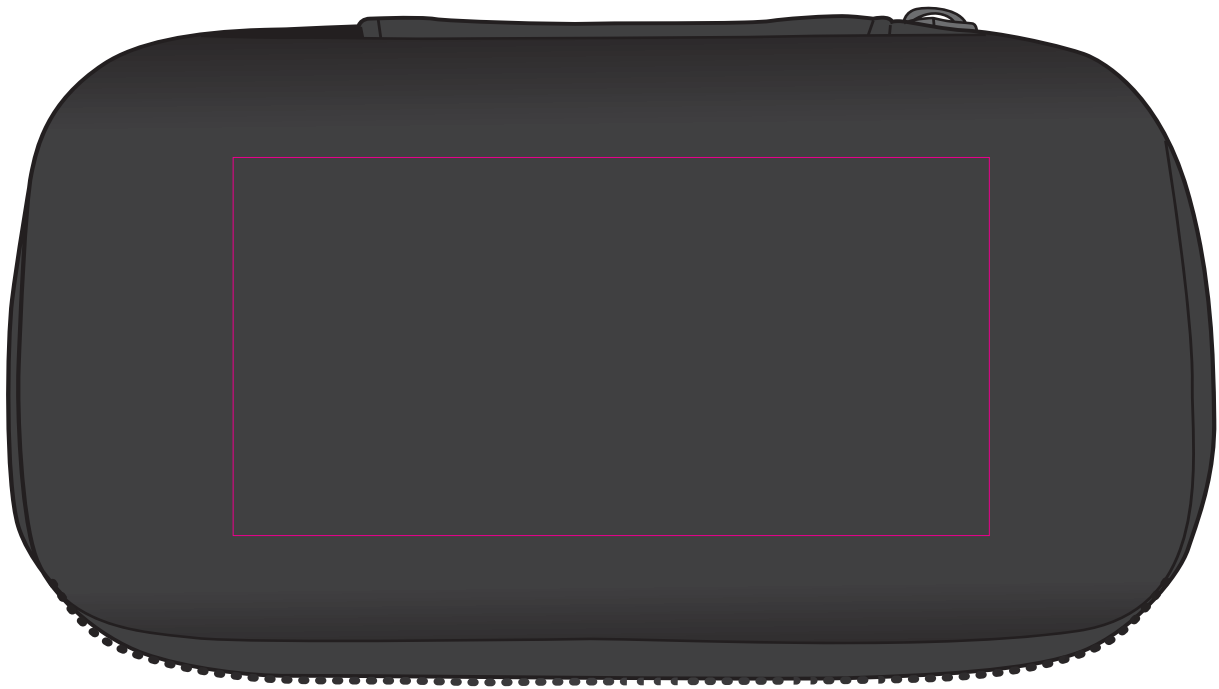
Order #
Proof #1
Date 00/00/00

Product Code : LL6668
Description : Medium EVA Zipper Case 50mmH
Item Colour/s : Black
Quantity :
Decoration Type : Screen Print
Print Colour

**White, Metallic Silver or
Metallic Gold print recommended**



PLEASE NOTE: EVA cases are hand stitched therefore variations in size and shape of the item will occur. Print position cannot be guaranteed across the entire order and is considered acceptable.



Maximum print area: 100mmL x 50mmH
Actual print size:

PLEASE SEE NEXT PAGE...

INTERNAL USE ONLY

INT:

QC Code:	New Pte # _____	Info:	Q: _____	Ctns: _____	Wt(kg): _____
PP:	Prt Int: _____	Prep:	S: _____	D: _____	
Rpt Ord:	Rpt Pte # _____	Cat:	E: _____	Ctns: _____	Wt(kg): _____
Split: Y/N	Mach: _____	U/P Int: _____	R/P Int: _____	R: _____	D: _____
Courier:					Total Wt(kg): _____



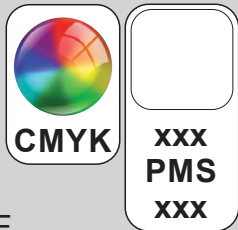


ARTWORK FOR APPROVAL

IMPORTANT: This drawing is for approximate print positional purposes only. It is not intended to be an exact scale or detailed representation of the product. Colour proofs are to be used as a guide only and not a true representation of true product or print colour. If item colours are important, order a sample from our current shipment.

Order #
Proof #1
Date 00/00/00

Product Code : LL0519 + LL6674
Description : Nova Power Bank + Medium Low Profile Eva Case 38mmH
Item Colour/s : White + Black
Quantity :
Decoration Type : Digital Direct (Powerbank) + Screen Print (Eva Case)
Print Colour



PLEASE NOTE:
 THIS ITEM HAS A
 TEXTURED SURFACE

Direct digital designs are printed in CMYK.
 Pantone colours will be produced in the closest CMYK colour match possible.

PLEASE NOTE: EVA cases are hand stitched therefore variations in size and shape of the item will occur. Print position cannot be guaranteed across the entire order and is considered acceptable.

Slight over spray of ink may appear on sides of item if a full reversal is printed

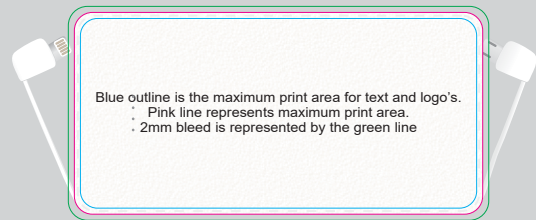
Showing at approx 60% of size

Standard



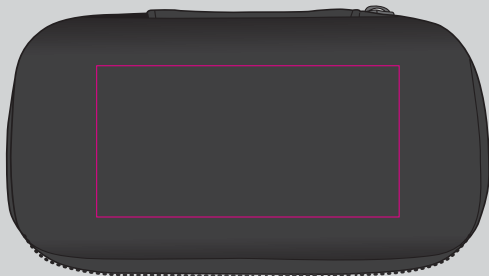
Maximum print area: 70mmL x 50mmH
 Actual print size:

Edge to Edge

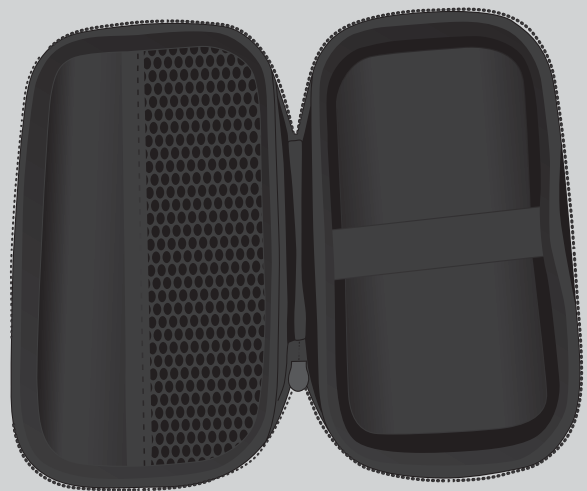


Maximum print area: 135mmL x 67mmH
 Actual print size:

Showing at approx 40%



Maximum print area: 100mmL x 50mmH
 Actual print size:



PLEASE SEE NEXT PAGE...

INTERNAL USE ONLY

INT:

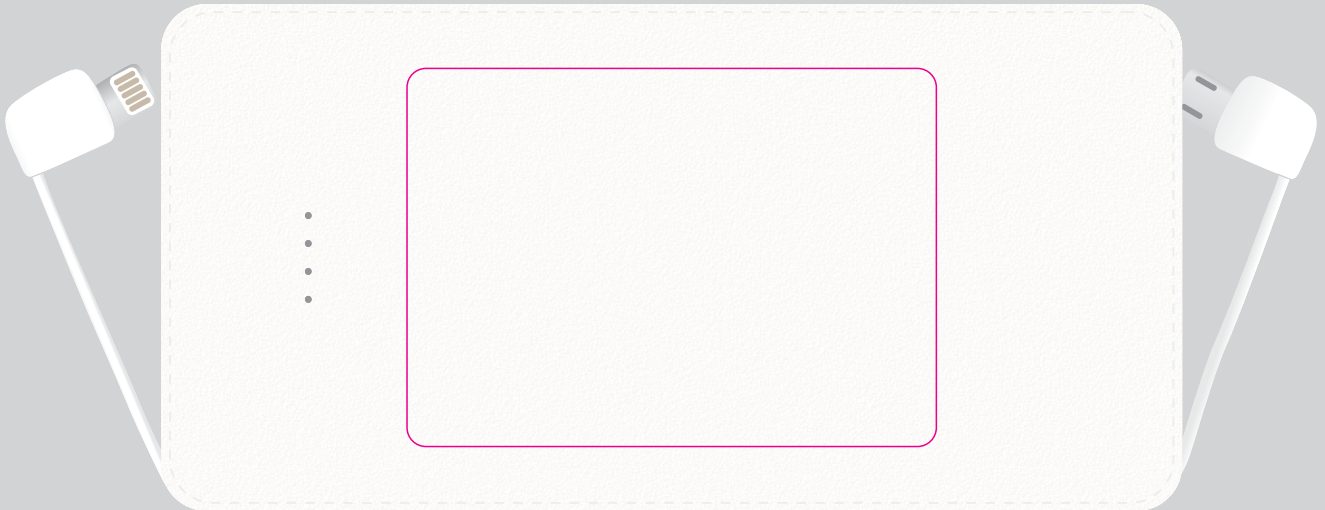
QC Code:	New Pte # _____	Info:	Q: _____	Ctns: _____	Wt(kg): _____
PP:	Prt Int: _____	Prep:	S: _____	D: _____	
Rpt Ord:	Rpt Pte # _____	Cat:	E: _____	Ctns: _____	Wt(kg): _____
Splt: Y/N	Mach: _____	U/P Int: _____	R/P Int: _____	R: _____	D: _____
Courier:					Total Wt(kg): _____

**PLEASE NOTE:
THIS ITEM HAS A TEXTURED SURFACE**

Direct digital designs are printed in CMYK.
Pantone colours will be produced in the closest CMYK colour match possible.

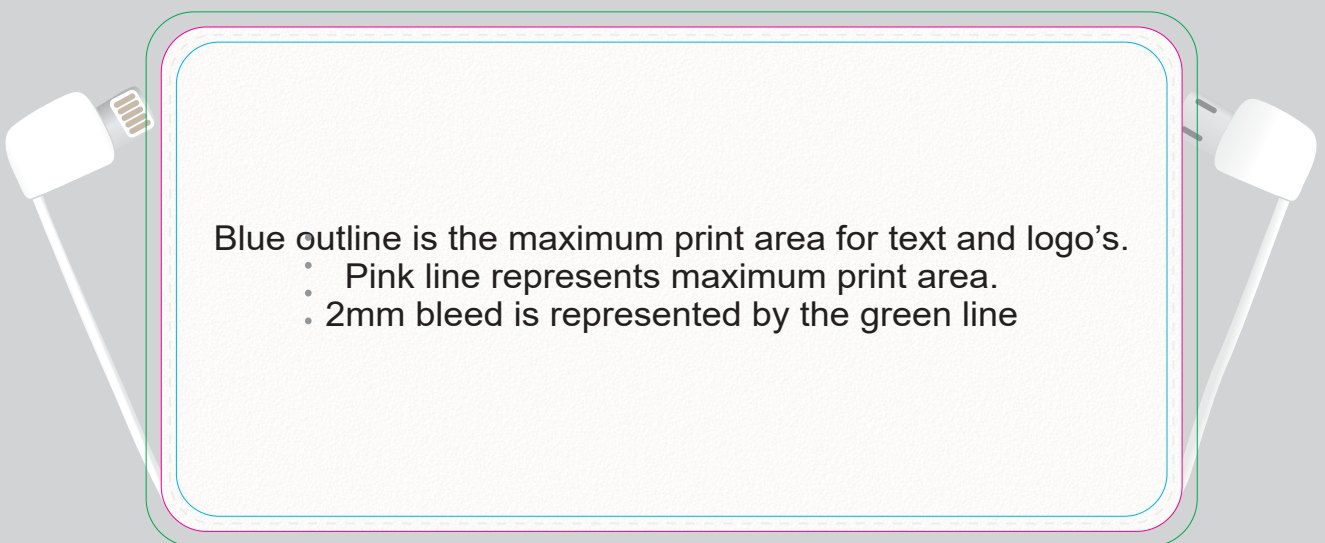
Slight over spray of ink may appear on sides of item if a full reversal is printed

Standard



Maximum print area: 70mmL x 50mmH
Actual print size:

Edge to Edge



Maximum print area: 135mmL x 67mmH
Actual print size:

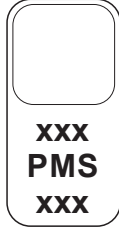


ARTWORK FOR APPROVAL

IMPORTANT: This drawing is for approximate print positional purposes only. It is not intended to be an exact scale or detailed representation of the product. Colour proofs are to be used as a guide only and not a true representation of true product or print colour. If item colours are important, order a sample from our current shipment.

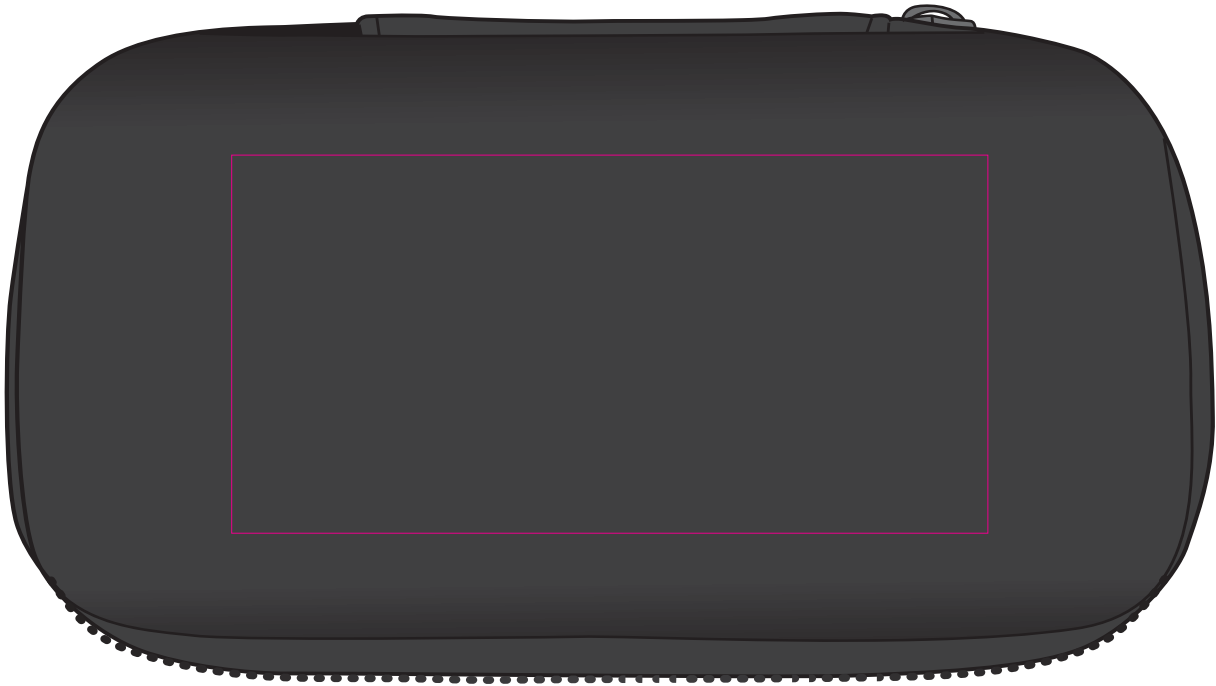
Order #
Proof #1
Date 00/00/00

Product Code : LL6674
Description : Medium EVA Zipper Case Low Profile 38mmH
Item Colour/s : Black
Quantity :
Decoration Type : Screen Print
Print Colour



**White, Metallic Silver or
Metallic Gold print recommended**

PLEASE NOTE: EVA cases are hand stitched therefore variations in size and shape of the item will occur. Print position cannot be guaranteed across the entire order and is considered acceptable.



Maximum print area: 100mmL x 50mmH
Actual print size:

PLEASE SEE NEXT PAGE...

INTERNAL USE ONLY

INT:

QC Code:	New Pte # _____	Info:	Q: _____	Ctns: _____	Wt(kg): _____
PP:	Prt Int: _____	Prep:	S: _____	D: _____	
Rpt Ord:	Rpt Pte # _____	Cat:	E: _____	Ctns: _____	Wt(kg): _____
Split: Y/N	Mach: _____	U/P Int: _____	R/P Int: _____	R: _____	D: _____
Courier:					Total Wt(kg): _____

