



ARTWORK FOR APPROVAL

IMPORTANT: This drawing is for approximate print positional purposes only. It is not intended to be an exact scale or detailed representation of the product. Colour proofs are to be used as a guide only and not a true representation of true product or print colour. If item colours are important, order a sample from our current shipment.

Order #
Proof #1
Date 00/00/00

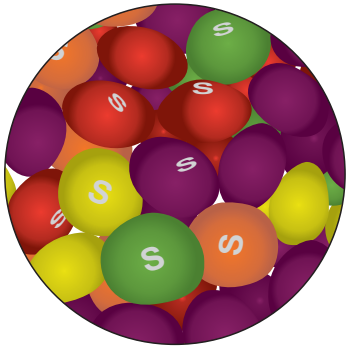
Product Code : LL0383
Description : Assorted Fruit Skittles in Dispenser
Item Colour/s : Clear/Assorted
Quantity :
Decoration Type : 4CP Standard Label
Print Colour :



Please note: Labels are digitally printed in CMYK. If pantone colour matching is important we require you to provide specific PMS colours, and we will produce closest CMYK colour match possible (to CP equivalent of coated pantone colours - perfect colour match not guaranteed). Vector art is required for colour matching. We are unable to edit colours in rasterized images. Print colours may be altered in appearance if placed on a strong colour background. Design position cannot be guaranteed across the entire order, some movement does occur during printing

Important: Labels are applied by hand and although the greatest care is taken label positioning cannot be guaranteed across the entire order.

Fill - Assorted Fruit Skittles



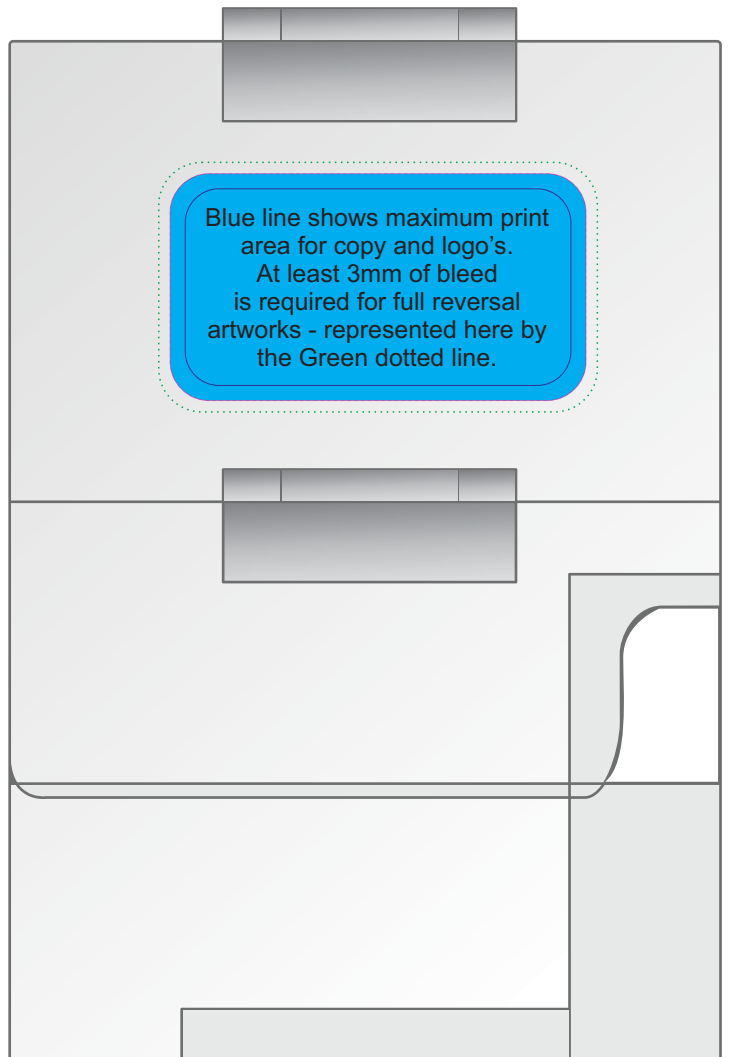
Assorted Fruit Skittles
Ingredients: Sugar, Glucose Syrup, Hydrogenated Vegetable Fat, Food Acids (330/331), Apple Juice Concentrate (0.6%), Thickeners (Gellan, Maltodextrin), Flavour, Modified Corn Starch, Colours (171, 129, 102, 110, 132, 133), Vegetable Fat, Glazing Agent (903), Emulsifier (322, from Soy).
Best Before: Made in Australia
 This Product may contain traces of peanuts & other nuts.
NUTRITIONAL INFORMATION
 Servings per package: 22 Serving Size: 25g

550g	Average Qty per 25g	Average Qty per 100g
Energy	kJ	kJ
Protein	Less than 1g	Less than 1g
Fat Total	1.5g	15g
Saturated	Less than 1g	1g
Carbohydrate	22.5g	90g
Sugars	19g	76g
Sodium	4.5g	18g

Produced for:
 Ph:
 www:

STATUTORY INGREDIENT LABELS PLEASE CHECK YOUR DETAILS

Maximum label size: 33mmL x 33mmH
 White label with black print
 adhered to the base of the dispenser



Maximum label size: 55mmL x 30mmH
 Actual print size:
 Printed on white label.
 Pink border shows max label size and is not printed

INTERNAL USE ONLY

INT:

QC Code:	New Pte # _____	Info:	Q: _____	Ctns: _____	Wt(kg): _____
PP:	Prt Int: _____	Prep:	S: _____	D: _____	
Rpt Ord:	Rpt Pte # _____	Cat:	E: _____	Ctns: _____	Wt(kg): _____
Split: Y/N	Mach: _____	U/P Int: _____	R/P Int: _____	R: _____	D: _____
Courier:					Total Wt(kg): _____