



ARTWORK FOR APPROVAL

IMPORTANT: This drawing is for approximate print positional purposes only. It is not intended to be an exact scale or detailed representation of the product. Colour proofs are to be used as a guide only and not a true representation of true product or print colour. If item colours are important, order a sample from our current shipment.

Order #
 Proof #1
 Date 00/00/00

Product Code : LL0382
 Description : Assorted Fruit Skittles in Container
 Item Colour/s : Clear/White/Assorted
 Quantity :
 Decoration Type : 4CP Standard Label
 Print Colour :



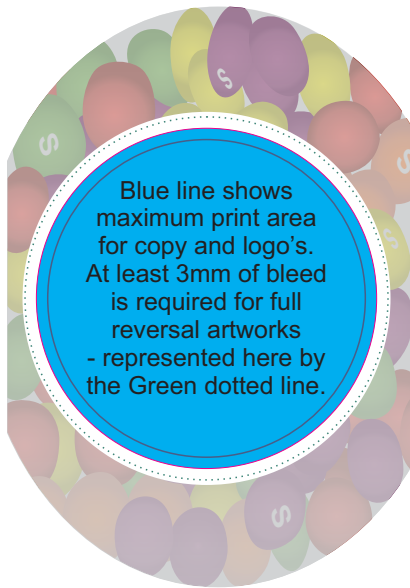
Please note: Labels are digitally printed in CMYK. If pantone colour matching is important we require you to provide specific PMS colours, and we will produce closest CMYK colour match possible (to CP equivalent of coated pantone colours - perfect colour match not guaranteed). Vector art is required for colour matching. We are unable to edit colours in rasterized images. Print colours may be altered in appearance if placed on a strong colour background. Design position cannot be guaranteed across the entire order, some movement does occur during printing

Important: Labels are applied by hand and although the greatest care is taken label positioning cannot be guaranteed across the entire order.

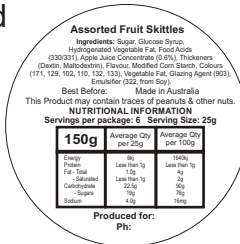
Label to be adhered to lid or to side?

LOGO POSITION CANNOT BE GUARANTEED ACROSS ORDER.

Tilted on its side



Maximum label size: 45mm Diameter
 Actual print size:
 Printed on white label.
 Pink border shows max label size and is not printed



STATUTORY INGREDIENT LABELS PLEASE CHECK YOUR DETAILS

Ingredients label: 32mm Diameter
 White Label with Black Thermal Print
 adhered to base of container

INTERNAL USE ONLY

INT:

QC Code: New Pte # _____ Info: Q: _____ Ctns: _____ Wt(kg): _____
 PP: Prt Int: _____ Prep: S: _____ D: _____
 Rpt Ord: Rpt Pte # _____ Cat: E: _____ Ctns: _____ Wt(kg): _____
 Split: Y/N Mach: _____ U/P Int: _____ R/P Int: _____ R: _____ D: _____
 Courier: Total Wt(kg): _____