



# ARTWORK FOR APPROVAL

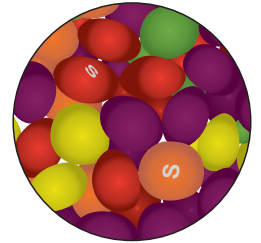
**IMPORTANT:** This drawing is for approximate print positional purposes only. It is not intended to be an exact scale or detailed representation of the product. Colour proofs are to be used as a guide only and not a true representation of true product or print colour. If item colours are important, order a sample from our current shipment.

**Order #**  
**Proof #1**  
**Date 00/00/00**

**Product Code** : LL0381  
**Description** : Assorted Fruit Skittles in 95 gram Pillow Packs  
**Item Colour/s** : Clear/Assorted  
**Quantity** :  
**Decoration Type** : 4CP Standard Label  
**Print Colour** :



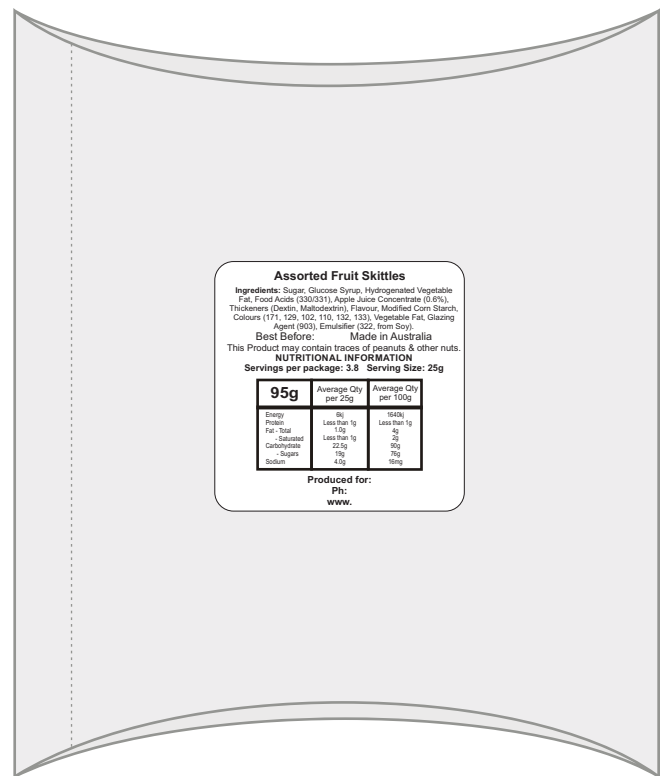
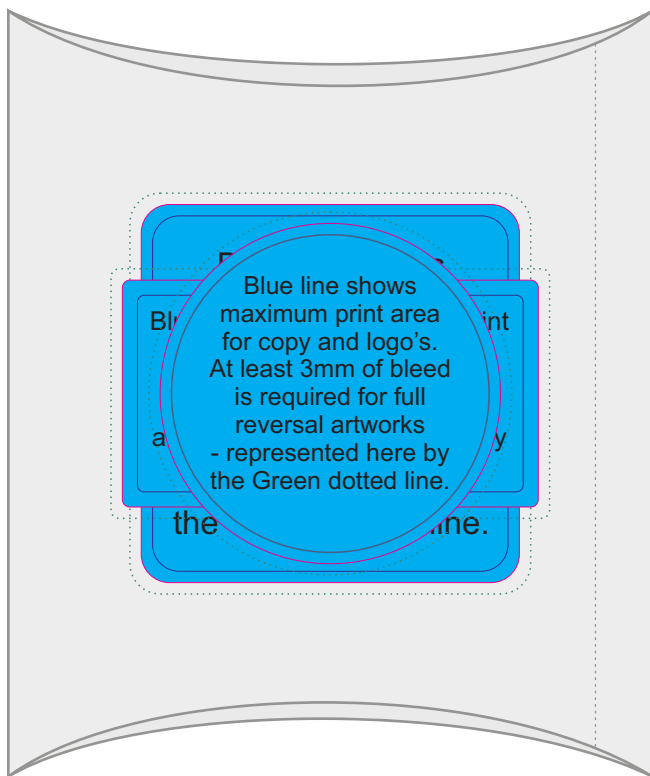
**Fill - Assorted Fruit Skittles**



**Please note:** Labels are digitally printed in CMYK.

If pantone colour matching is important we require you to provide specific PMS colours, and we will produce closest CMYK colour match possible (to CP equivalent of coated pantone colours - perfect colour match not guaranteed). Vector art is required for colour matching. We are unable to edit colours in rasterized images. Print colours may be altered in appearance if placed on a strong colour background. Design position cannot be guaranteed across the entire order, some movement does occur during printing

**Important:** Labels are applied by hand and although the greatest care is taken label positioning cannot be guaranteed across the entire order.



Maximum label size: 50mmL x 50mmH or 45mm diameter or 55mmL x 30mmH  
 Actual print size:  
 Printed on white label.  
 Pink border shows max label size and is not printed

**STATUTORY INGREDIENTS LABEL  
 PLEASE CHECK YOUR DETAILS**  
 Maximum label size: 33mmL x 33mmH  
 White label with black print  
 (including your distributor details)  
 adhered to the back of the cello bag

**Assorted Fruit Skittles**  
**Ingredients:** Sugar, Glucose Syrup, Hydrogenated Vegetable Fat, Food Acids (330/331), Alpha-Amino Concentrate (0.6%), Thickeners (Dextrin, Maltodextrin), Flavour, Modified Corn Starch, Colours (171, 129, 102, 110, 132, 133), Vegetable Fat, Glazing Agent (903), Emulsifier (322, from Soy).  
**Best Before:** Made in Australia  
 This Product may contain traces of peanuts & other nuts.  
**NUTRITIONAL INFORMATION**  
 Servings per package: 3.8 Serving Size: 25g

95g	Average Qty per 25g	Average Qty per 100g
Energy	kJ	kJ
Protein	g	g
Fat - Total	Less than 1g	Less than 1g
- Saturated	Less than 1g	Less than 1g
Carbohydrate	25g	100g
- Sugars	19g	75g
Sodium	40g	160g

Produced for:  
 Pte:  
 www.

**INTERNAL USE ONLY**

**INT:**

QC Code:	New Pte # _____	Info:	Q: _____	Ctns: _____	Wt(kg): _____
PP:	Prt Int: _____	Prep:	S: _____	D: _____	
Rpt Ord:	Rpt Pte # _____	Cat:	E: _____	Ctns: _____	Wt(kg): _____
Split: Y/N	Mach: _____	U/P Int: _____	R/P Int: _____	R: _____	D: _____
Courier:					Total Wt(kg): _____