



ARTWORK FOR APPROVAL

IMPORTANT: This drawing is for approximate print positional purposes only. It is not intended to be an exact scale or detailed representation of the product. Colour proofs are to be used as a guide only and not a true representation of true product or print colour. If item colours are important, order a sample from our current shipment.

Order #
Proof #1
Date 00/00/00

Product Code : LL0217
Description : Hover Wireless Charger/Mouse Pad + Sleeve
Item Colour/s : Black
Quantity :
Decoration Type : Direct Digital + Digital Sleeve
Print Colour



Direct digital designs are printed in CMYK.
Pantone colours will be produced in the closest CMYK colour match possible.

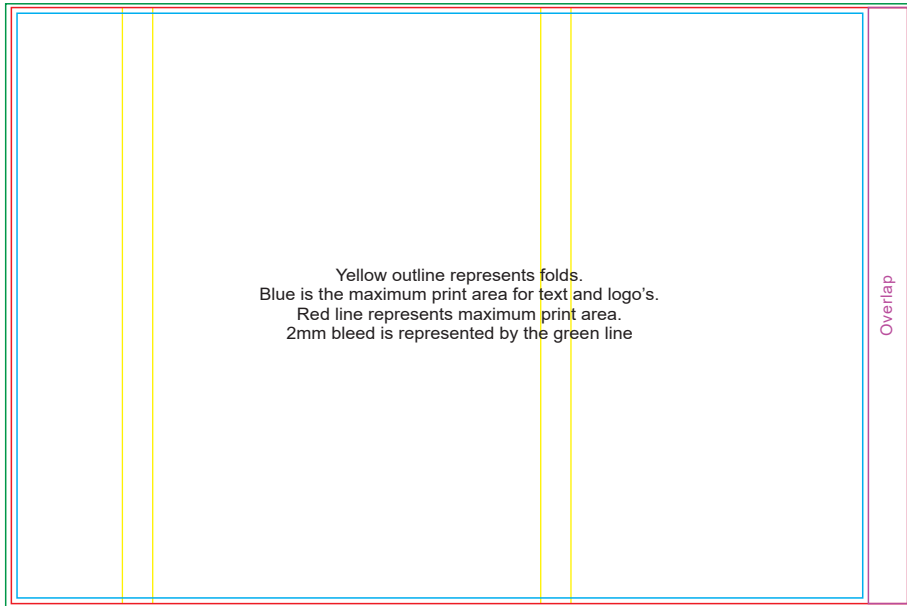
BELOW IS 30% OF ACTUAL SIZE



Maximum print area: Small - 180mmL x 180mmH
Actual print size:



Maximum print area: Large - 270mmL x 189mmH
Actual print size:



Yellow outline represents folds.
Blue is the maximum print area for text and logo's.
Red line represents maximum print area.
2mm bleed is represented by the green line

Overlap

Digitally printed Sleeve Showing at approx 50% of size

Maximum print area: 319.2mmL x 480mmH
Actual print size:

PLEASE SEE NEXT PAGE...

INTERNAL USE ONLY

INT:

QC Code:	New Pte # _____	Info:	Q: _____	Ctns: _____	Wt(kg): _____
PP:	Prt Int: _____	Prep:	S: _____	D: _____	
Rpt Ord:	Rpt Pte # _____	Cat:	E: _____	Ctns: _____	Wt(kg): _____
Split: Y/N	Mach: _____	U/P Int: _____	R/P Int: _____	R: _____	D: _____
Courier:					Total Wt(kg): _____



Maximum print area: Small - 180mmL x 180mmH
Actual print size:

Over spray may be apparent on sides when digitally printing full reversal prints.

White line shows maximum print area for copy and logo's.
At least 3mm of bleed is required for full reversal artworks -
represented here by the green line.



Maximum print area: Large - 270mmL x 189mmH
Actual print size:



ARTWORK FOR APPROVAL

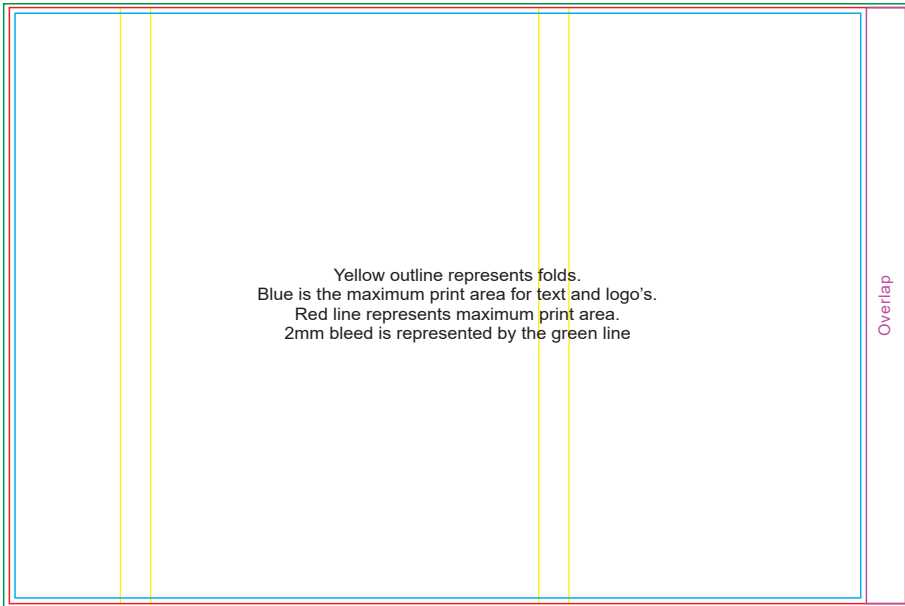
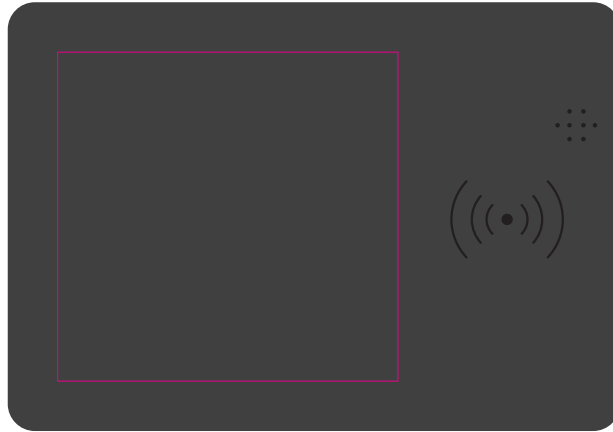
IMPORTANT: This drawing is for approximate print positional purposes only. It is not intended to be an exact scale or detailed representation of the product. Colour proofs are to be used as a guide only and not a true representation of true product or print colour. If item colours are important, order a sample from our current shipment.

Order #
Proof #1
Date 00/00/00

Product Code : LL0217
Description : Hover Wireless Charger/Mouse Pad
Item Colour/s : Black
Quantity :
Decoration Type : Screen
Print Colour



BELOW IS 30% OF ACTUAL SIZE



Digitally printed Sleeve
Showing at approx 50% of size

Maximum print area: 319.2mmL x 480mmH
Actual print size:

PLEASE SEE NEXT PAGE...

INTERNAL USE ONLY

INT:

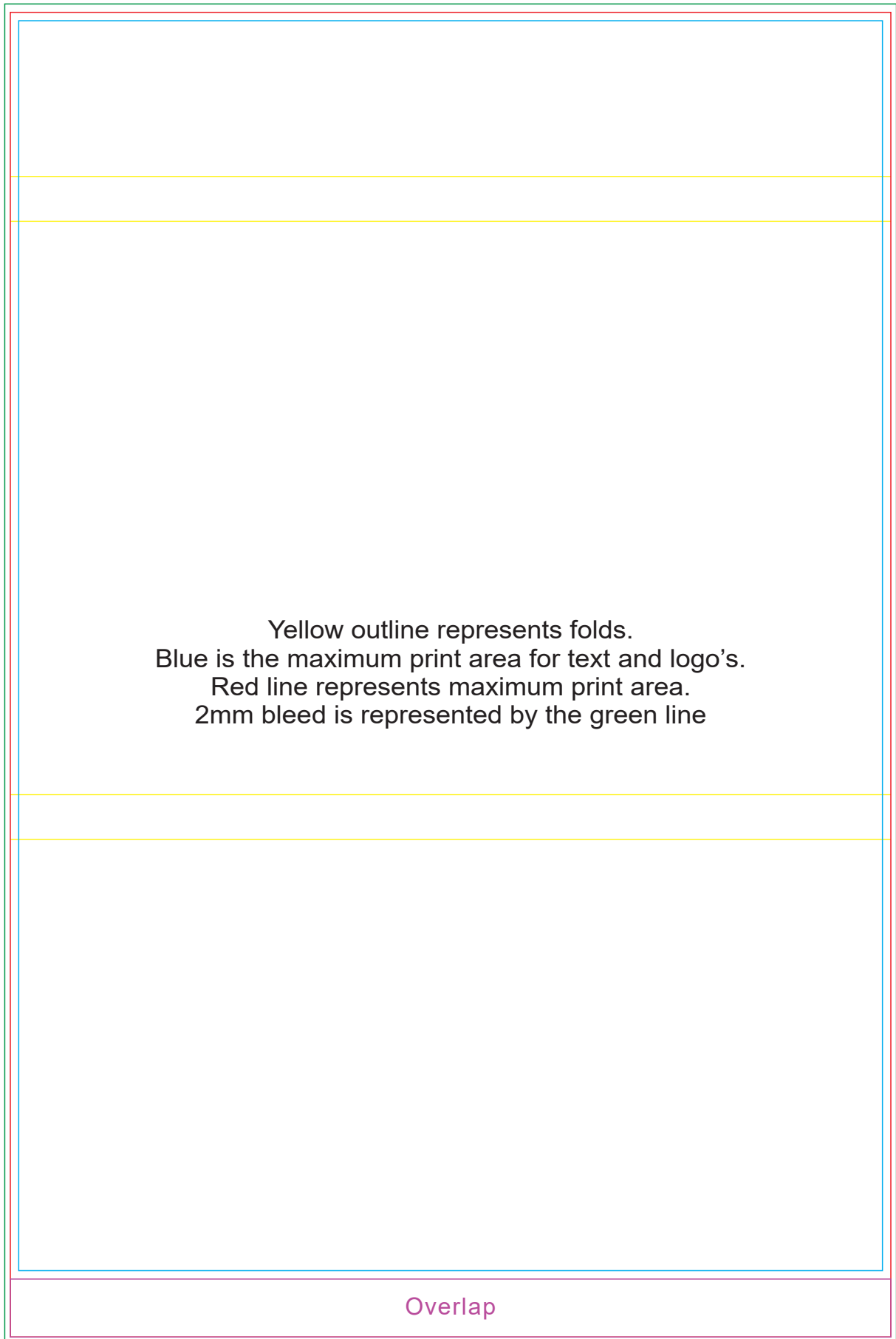
QC Code:	New Pte # _____	Info:	Q: _____	Ctns: _____	Wt(kg): _____
PP:	Prt Int: _____	Prep:	S: _____	D: _____	
Rpt Ord:	Rpt Pte # _____	Cat:	E: _____	Ctns: _____	Wt(kg): _____
Split: Y/N	Mach: _____	U/P Int: _____	R/P Int: _____	R: _____	D: _____
Courier:					Total Wt(kg): _____



Maximum print area: 150mmL x 145mmH

Actual print size:

**Digitally printed Sleeve
Showing at approx 50% of size**



Yellow outline represents folds.
Blue is the maximum print area for text and logo's.
Red line represents maximum print area.
2mm bleed is represented by the green line

Overlap

Maximum print area: 319.2mmL x 480mmH
Actual print size: