



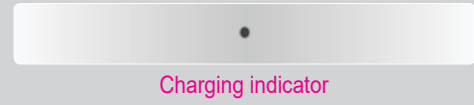
# ARTWORK FOR APPROVAL

**IMPORTANT:** This drawing is for approximate print positional purposes only. It is not intended to be an exact scale or detailed representation of the product. Colour proofs are to be used as a guide only and not a true representation of true product or print colour. If item colours are important, order a sample from our current shipment.

**Order #**  
**Proof #1**  
**Date 00/00/00**

**Product Code** : LL0208  
**Description** : Square Arc Inductive Charger  
**Item Colour/s** : White  
**Quantity** :  
**Decoration Type** : Direct Digital + 4CP Digital Sleeve  
**Print Colour**

USB END



Direct digital designs are printed in CMYK.  
Pantone colours will be produced in the closest CMYK colour match possible.

**Below is approx 75% of Size**

### Edge to Edge

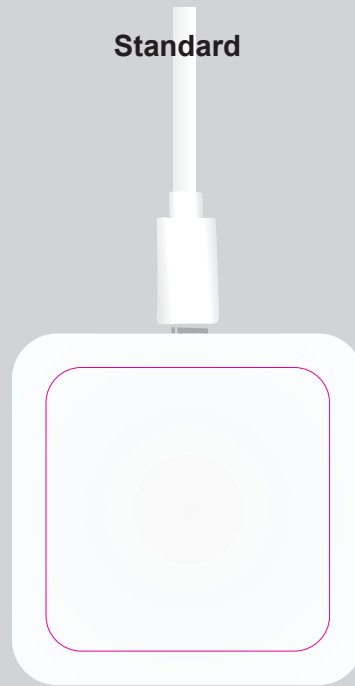
Slight over spray of ink may appear on sides of item if a full reversal is printed



Blue outline is the maximum print area for text and logo's.  
Pink line represents maximum print area.  
2mm bleed is represented by the green line

Maximum print area: 62mmL x 62mmH  
Actual print size:

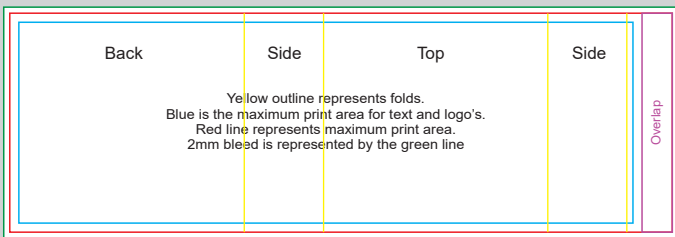
### Standard



Maximum print area: 50mmL x 50mmH  
Actual print size:

**Below is approx 40% of Size**

### Direct Digital Sleeve



Yellow outline represents folds.  
Blue is the maximum print area for text and logo's.  
Red line represents maximum print area.  
2mm bleed is represented by the green line

Maximum print area: 219mmL x 72.3mmH  
Actual print size:

**PLEASE SEE NEXT PAGE...**

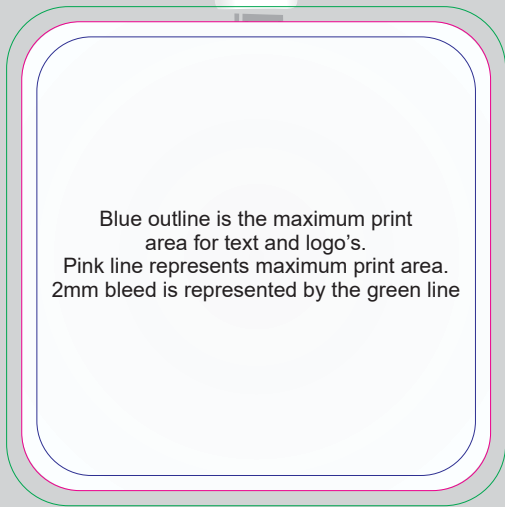
#### INTERNAL USE ONLY

INT:

QC Code:	New Pte # _____	Info:	Q: _____	Ctns: _____	Wt(kg): _____
PP:	Prt Int: _____	Prep:	S: _____	D: _____	
Rpt Ord:	Rpt Pte # _____	Cat:	E: _____	Ctns: _____	Wt(kg): _____
Split: Y/N	Mach: _____	U/P Int: _____	R/P Int: _____	R: _____	D: _____
Courier:					Total Wt(kg): _____

## Edge to Edge

Slight over spray of ink may appear on sides of item if a full reversal is printed



Maximum print area: 62mmL x 62mmH  
Actual print size:

## Standard



Maximum print area: 50mmL x 50mmH  
Actual print size:

## USB END



Charging indicator

PLEASE SEE NEXT PAGE...

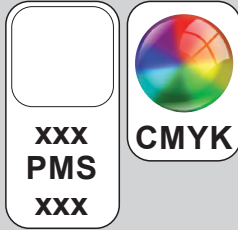


# ARTWORK FOR APPROVAL

**IMPORTANT:** This drawing is for approximate print positional purposes only. It is not intended to be an exact scale or detailed representation of the product. Colour proofs are to be used as a guide only and not a true representation of true product or print colour. If item colours are important, order a sample from our current shipment.

**Order #**  
**Proof #1**  
**Date 00/00/00**

**Product Code** : LL0208  
**Description** : Square Arc Inductive Charger  
**Item Colour/s** : White  
**Quantity** :  
**Decoration Type** : Pad + 4CP Digital Sleeve  
**Print Colour**



USB END

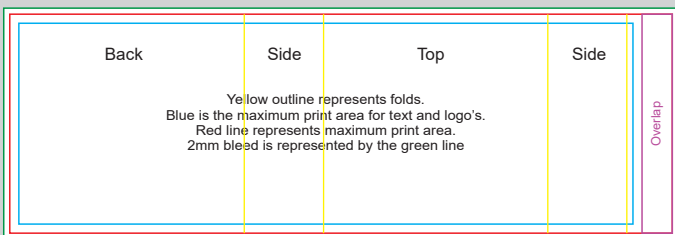


Charging indicator



Maximum print area: 50mmL x 50mmH  
 Actual print size:

**Below is approx 40% of Size**  
**Direct Digital Sleeve**



Maximum print area: 219mmL x 72.3mmH  
 Actual print size:

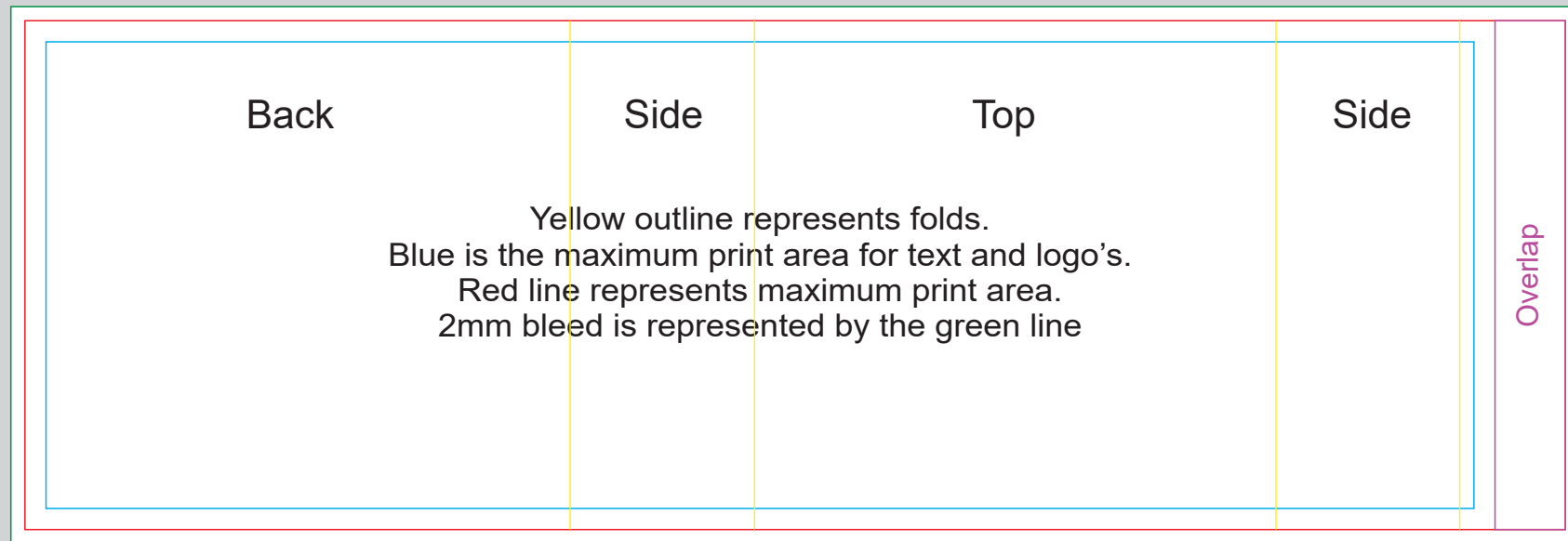
**PLEASE SEE NEXT PAGE...**

**INTERNAL USE ONLY**

**INT:**

QC Code:	New Pte # _____	Info:	Q: _____	Ctns: _____	Wt(kg): _____
PP:	Prt Int: _____	Prep:	S: _____	D: _____	
Rpt Ord:	Rpt Pte # _____	Cat:	E: _____	Ctns: _____	Wt(kg): _____
Split: Y/N	Mach: _____	U/P Int: _____	R/P Int: _____	R: _____	D: _____
Courier:					Total Wt(kg): _____

## Direct Digital Sleeve



Maximum print area: 219mmL x 72.3mmH  
Actual print size: