



## ARTWORK FOR APPROVAL

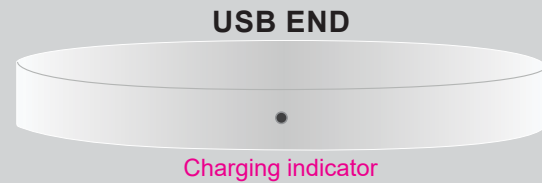
**IMPORTANT:** This drawing is for approximate print positional purposes only. It is not intended to be an exact scale or detailed representation of the product. Colour proofs are to be used as a guide only and not a true representation of true product or print colour. If item colours are important, order a sample from our current shipment.

Order #  
Proof #1  
Date 00/00/00

Product Code : LL0208  
Description : Round Arc Inductive Charger  
Item Colour/s : White  
Quantity :  
Decoration Type : Direct Digital + 4CP Digital Sleeve  
Print Colour

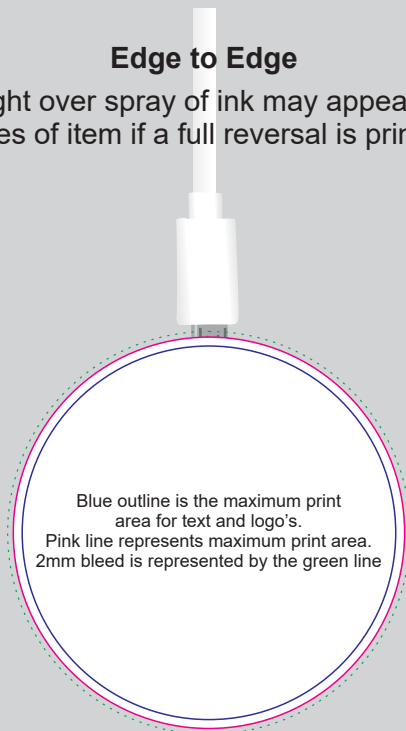


Direct digital designs are printed in CMYK.  
Pantone colours will be produced in the closest CMYK colour match possible.



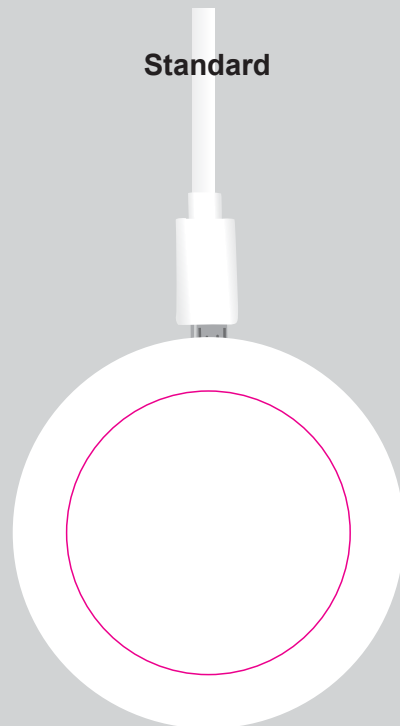
Below is approx 75% of Size

**Edge to Edge**  
Slight over spray of ink may appear on sides of item if a full reversal is printed



Maximum print area: 69mm Diameter  
Actual print size:

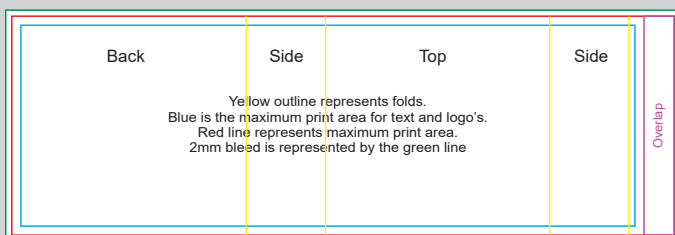
**Standard**



Maximum print area: 50mm Diameter  
Actual print size:

Below is approx 40% of Size

**Direct Digital Sleeve**



Maximum print area: 219mmL x 72.3mmH  
Actual print size:

**PLEASE SEE NEXT PAGE...**

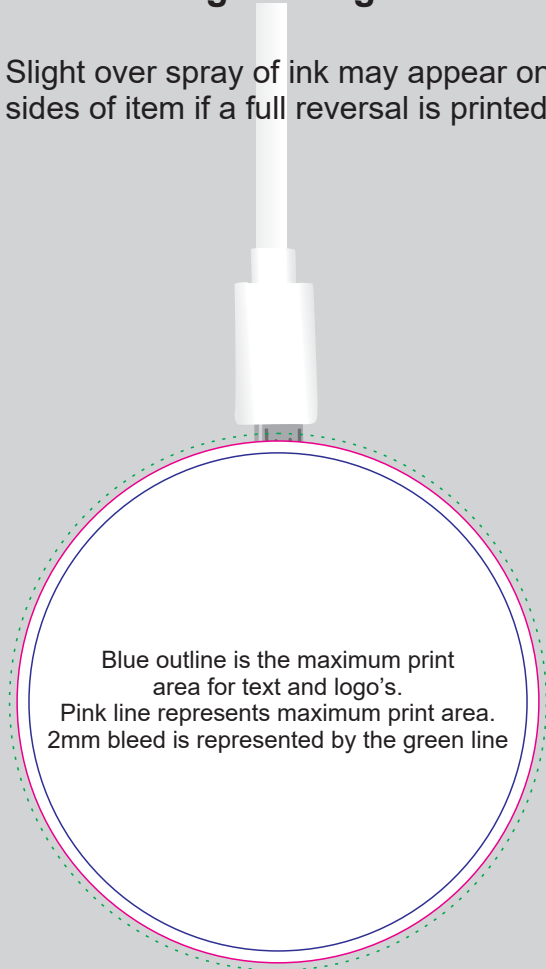
### INTERNAL USE ONLY

INT:

QC Code:	New Pte # _____	Info:	Q: _____	Ctns: _____	Wt(kg): _____
PP:	Prt Int: _____	Prep:	S: _____	D: _____	
Rpt Ord:	Rpt Pte # _____	Cat:	E: _____	Ctns: _____	Wt(kg): _____
Split: Y/N	Mach: _____	U/P Int: _____	R/P Int: _____	R: _____	D: _____
Courier:					Total Wt(kg): _____

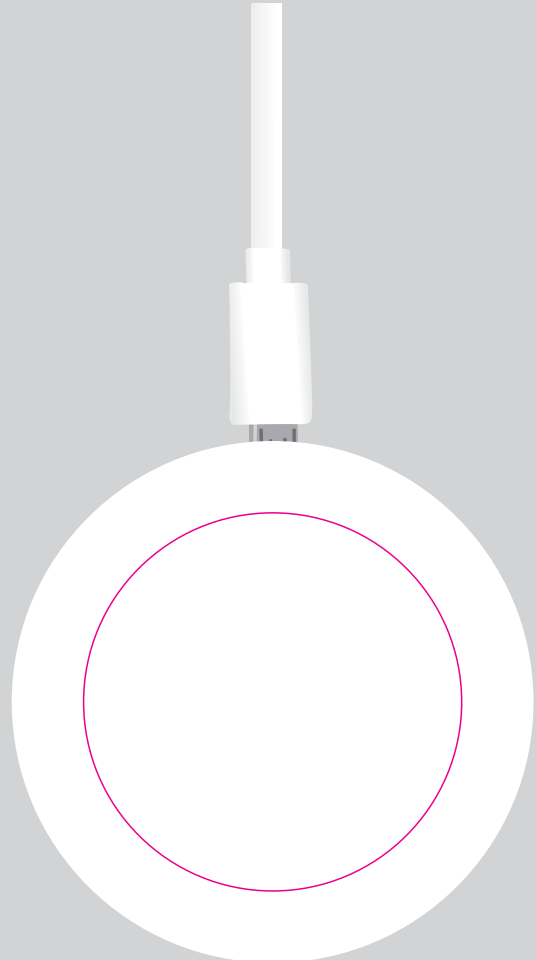
### Edge to Edge

Slight over spray of ink may appear on sides of item if a full reversal is printed



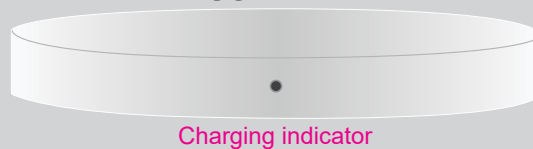
Maximum print area: 69mm Diameter  
Actual print size:

### Standard



Maximum print area: 50mm Diameter  
Actual print size:

### USB END



PLEASE SEE NEXT PAGE...

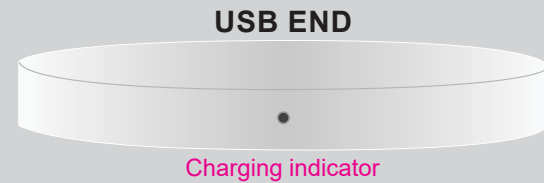
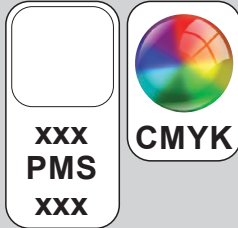


## ARTWORK FOR APPROVAL

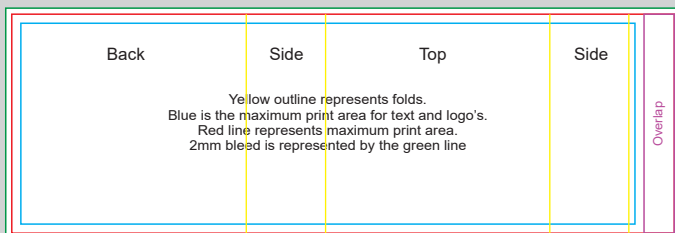
**IMPORTANT:** This drawing is for approximate print positional purposes only. It is not intended to be an exact scale or detailed representation of the product. Colour proofs are to be used as a guide only and not a true representation of true product or print colour. If item colours are important, order a sample from our current shipment.

Order #  
Proof #1  
Date 00/00/00

Product Code : LL0208  
Description : Arc Inductive Charger  
Item Colour/s : White  
Quantity :  
Decoration Type : Pad + 4CP Digital Sleeve  
Print Colour



Below is approx 40% of Size  
Direct Digital Sleeve



Maximum print area: 50mm Diameter  
Actual print size:

Maximum print area: 219mmL x 72.3mmH  
Actual print size:

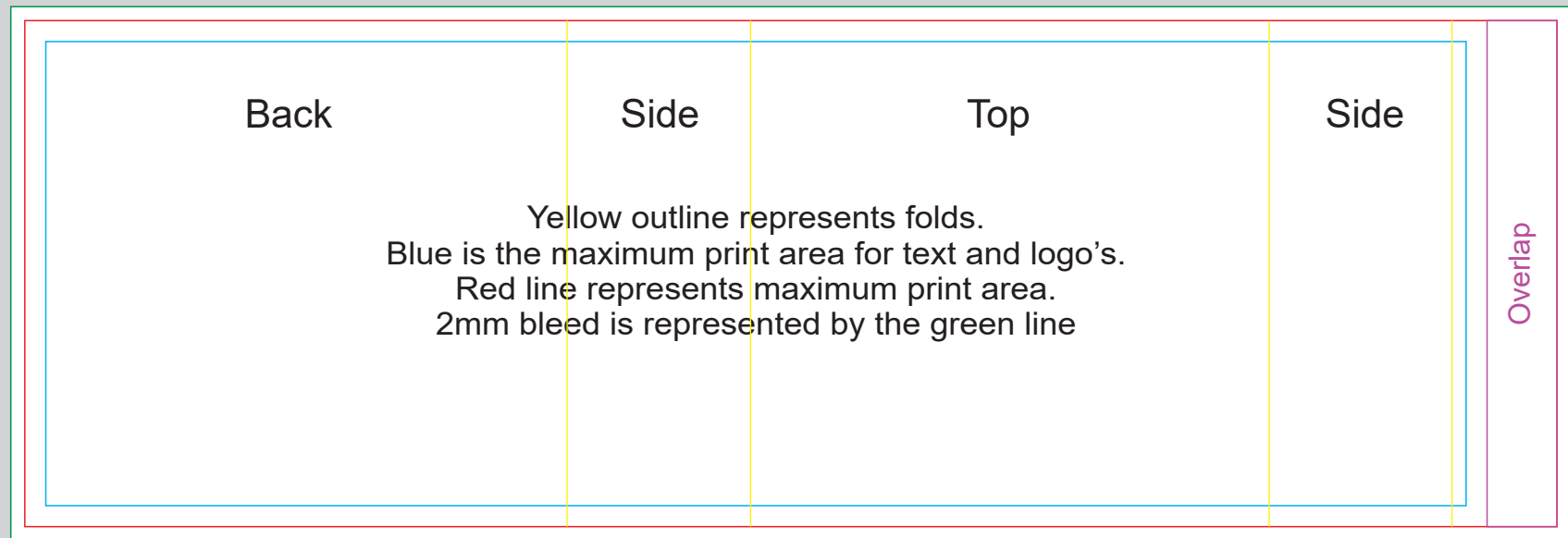
**PLEASE SEE NEXT PAGE...**

### INTERNAL USE ONLY

INT:

QC Code:	New Pte #	Info:	Q:	Ctns:	Wt(kg):
PP:	Prt Int:	Prep:	S:	D:	
Rpt Ord:	Rpt Pte #	Cat:	E:	Ctns:	Wt(kg):
Split: Y/N	Mach:	U/P Int:	R/P Int:	R:	D:
Courier:					Total Wt(kg):

## Direct Digital Sleeve



Maximum print area: 219mmL x 72.3mmH  
Actual print size: